

# MINT **ERROR** NEWS<sup>TM</sup> MAGAZINE

Bringing the latest mint error news to the collector.



## Spectacular Buffalo Nickel Off-Center on Cent Planchet



Excited About Mint Errors?  
Join Error World Club  
[errorworldclub.org](http://errorworldclub.org)

18 Page  
Price Guide  
Inside!

Issue 8 • Winter 2004  
A Mike Byers Publication



# Al's Coins

Dealer in Mint Errors  
and Currency Errors

[alscoins.com](http://alscoins.com)



**S**pecializing in Mint Errors and Currency Errors for 25 years. Visit my website to see a diverse group of type, modern mint and major currency errors. We also handle regular U.S. and World coins.



I'm a member of CONECA and the American Numismatic Association. I deal with major Mint Error Dealers and have an excellent standing with eBay. Check out my show schedule to see which major shows I will be attending. I solicit want lists and will locate the Mint Errors of your dreams.

## Al's Coins

P.O. Box 147

National City, CA 91951-0147

Phone: (619) 442-3728

Fax: (619) 442-3693

e-mail: [alscoins@aol.com](mailto:alscoins@aol.com)





Issue 8 • Winter 2004

Publisher & Editor

**Mike Byers**

Design & Layout

**Sam Rhazi**

Contributing Editors

**Ronah Johnson**

**Allan Levy**

Contributing Writers

James Archibald

Xan Chamberlain

Raymond Gaudette

Rich Schemmer

Saul Teichman

Fred Weinberg

Advertising

The ad space is sold out. Please e-mail  
editor@minterrornews.com to be added  
to the waiting list.

Subscriptions

For a complimentary issue please e-mail  
editor@minterrornews.com

*Mint Error News* is the official publication of  
minterrornews.com. All content Copyright 2004  
*Mint Error News*. P.O. Box 5090, San Clemente,  
CA 92674. All rights reserved. No part of this  
magazine may be reproduced in any form without  
the expressed written permission of the publisher.  
Opinions expressed in this publication do not  
necessarily represent the viewpoints of *Mint Er-  
ror News*. This publication is distributed with  
the understanding that the information presented  
herein is from various sources for which there can  
be no warranty or responsibility by the publisher  
as to accuracy, price or completeness. *Mint Error  
News* accepts unsolicited manuscripts, artwork,  
and photographs for publication. Direct editorial  
submissions to editor@minterrornews.com or P.O.  
Box 5090, San Clemente, CA 92674. All unsol-  
icited material will not be returned.

PRINTED IN THE U.S.A.

# Mint Error News Magazine

Issue 8 • Winter 2004

## - Table of Contents -

Mike Byers' Welcome	4
Off-Center Errors	5
Around The World - Updating Activity In and Around Error World	8
Another Martha Washington Test Piece Discovered	9
Spectacular Buffalo Nickel Off-Center on Cent Planchet	10
A Report on the ANA and Mint Errors	12
Double Struck 1924 Standing Liberty Quarter	15
Unique 3 Piece Cent and Dime Mated Set	16
Unique Morgan Dollar Struck 20% O/C & Brockage Rev.	20
Two Headed Muling	22
The 2004 ANA Convention and The Error Coin Market	25
U.S. Half Cents: An Undiscovered and Unloved Series	26
Mint Error News Price Guide	33
Exclusive Discounts	51
(1943) Denver Quarter Struck on U.S. Steel Cent Planchet	53
Two Dramatic Indian Cent Errors	54
1874 \$1 U.S. Gold Type 3 Broadstruck	57
1909 Indian Head Cent Struck on Silver Dime Blank	58
1873 Shield Nickel Struck on Cent Planchet	60
1964 Kennedy Half Struck on Clad Quarter Planchet	61
1983-P Jefferson Nickel Struck on CU Cent Planchet	62
2000-P "Mule" Sacagawea \$1 Reverse With 25¢ Obverse	64
Double Struck 1797 Drape Bust Large Cent	66
Mint Error News Museum	76
Frequently Asked Questions	80

# MINT **ERROR** NEWS<sup>TM</sup> MAGAZINE

Bringing the latest mint error news to the collector.



Mike Byers, Publisher & Editor  
Welcomes You!

Welcome to Mint Error News Magazine, bringing the latest mint error news and information to the collector. The focus of the magazine will be on articles, features and discoveries of major mint errors (striking errors) from the United States and around the World. Minterrornews.com was launched on February 4, 2003.

Two major Mint Error News sponsors are Mike Byers and ANACS. Mint Error News released its first magazine in the spring of 2003. Mike Byers is the Publisher and Editor of Mint Error News Magazine.



Mike Byers (mikebyers.com) has been a Professional Numismatist since 1978. He specializes in U.S. and World errors, and is now the largest dealer of the world's rarest mint errors. His new discoveries of major mint errors has been front page news for years. Mike Byers is also a Consultant for ANACS for Mint Errors.



ANACS is one of the three major grading services. They have been authenticating, certifying and encapsulating mint errors since 1991 which is years longer than the other two grading services combined. ANACS is highly respected in the Numismatic Community and has extensive experience in authenticating mint errors.

Two other sponsors to minterrornews.com are Tim Bullard (errorcointrader.com) and Allan Levy (alsocoins.com). Because of their combined experience and insight of the error coin market, they will bring valuable news and information to minterrornews.com.

Additional sponsors are CoinLink, CoinFacts.com, errorworldclub.org, Eureka Trading, uspatterns.com, Northeast Numismatics, Robert L. Astrich and The Software Clinic. We encourage collectors and dealers to submit articles and photos of major mint errors that we may feature on the website.

# Off-Center Errors

by Al Levy (alscoins.com)

Here are records of recent sales of off-center mint errors on eBay:

- All coins were listed on eBay and closed from July 1, 2004 to September 30, 2004.
- All lots had buyers. If the coins actually changed hands is unknown.
- A picture accompanied each lot or it was not recognized.
- Mislabelled items were ignored.
- Some lots may have changed hands more than once.
- “D” next to the date symbolizes that the coin had damage or was scratched.
- “C” next to the date symbolizes that the coin was cleaned.
- “B” next to the date symbolizes that the coin had damage and was cleaned.
- If the date or mint mark was missing or partially visible, parentheses were used.
- Postage/handling/insurance fees were ignored.
- Major auctions were not listed.

DENOM	YEAR	NOTES	GRADE	LESS:11%	11%-35%	36%-75%	OVER 75%
1c	1864	B	GOOD			\$237.06	
1c	1890	D	GOOD	\$63.00			
1c	1900		PCGS 65 BRN	\$482.88			
1c	1902	D	VF		\$67.00		
1c	1902		XF	\$90.00	\$178.38		
1c	1902		PCGS 45	\$103.50			
1c	1904		ANANS 08	\$51.25			
1c	1905		VF		\$256.00		
1c	1905	C	XF		\$177.50		
1c	1905	C	AU		\$197.50		
1c	1907	B	GOOD	\$53.15			
1c	1908		CH BU RED			\$379.55	
1c	1917-D		XF		\$159.50		
1c	1917-S		XF	\$87.00			
1c	1918-S		XF	\$75.11			
1c	1919		AU	\$80.00			
1c	1919-S		XF	\$46.00			
1c	1919-S		AU	\$159.50			
1c	1929-D		UNC BRN	\$184.50			
1c	193(0)	C	XF		\$27.00		
1c	1930-D		XF		\$93.76		
1c	1930-D	D	AU		\$70.00		
1c	1937		XF	\$27.99	\$50.00		
1c	1937		NGC 64 BRN	\$109.25			
1c	1942		UNC BRN	\$42.00			
1c	1943	D	XF	\$28.23	\$92.00		
1c	1943	D	UNC	\$48.55			
1c	1943		UNC	\$49.99			
1c	1943-S	D	ANACS NET 60	\$100.00			
1c	1944		XF		\$20.50		
1c	1944		UNC BRN	\$27.00			
1c	1944		NGC 62 R&B	\$41.00			
1c	1945-S		XF		\$35.50		

DENOM	YEAR	NOTES	GRADE	LESS:11%	11%-35%	36%-75%	OVER 75%
1c	1946-S	C	UNC		\$113.50		
1c	194(9)-(?)		XF			\$66.85	
1c	194(?)		BU RED		\$24.51		
1c	1950-D	D	XF			\$43.89	
1c	1951-D		XF		\$56.55	\$52.99	
1c	1952-D		UNC BRN		\$42.99		
1c	1953		GOOD			\$33.00	
1c	1953-D		VF			\$51.01	
1c	1960-D LD	D	BU RED			\$45.75	
1c	1961-D		AU			\$42.00	
1c	1961-D		BU BRN			\$51.00	
1c	1962-D		AU			\$36.56	
1c	1963		CH BU BRN	\$56.00			
1c	1964		UNC R&B		\$18.50		
1c	1964-D		CH BU R&B			\$19.95	
1c	1964-D		GEM BU BRN			\$27.30	
1c	1965		PCGS 62 RED	\$26.95			
1c	1966		AU	\$4.25			
1c	1966	C	UNC	\$4.75			
1c	1966		PCGS 66 RED		\$51.00		
1c	196(6)		GEM BU RED		\$14.50		
1c	1967		AU		\$17.25		
1c	1967		BU RED			\$22.72	
1c	1968		BU R&B		\$25.49		
1c	1968-D		BU BRN			\$10.59	\$11.01
1c	1968-D		BU RED			\$19.35	
1c	1968-D		CH BU R&B			\$14.90	
1c	(?)68-D		NGC 64 BRN				\$16.60
1c	1968-S		CH BU R&B	\$26.00			
1c	1968-S		CH BU RED	\$45.00			
1c	196(8)-S		CH BU RED		\$44.50		
1c	1969		UNC R&B		\$283.41		
1c	1969		BU RED		\$256.00		

# Off-Center Errors

DENOM	YEAR	NOTES	GRADE	LESS-11%	11%-35%	36%-75%	OVER 75%
1c	1969-D	C	UNC			\$16.05	
1c	1969-D		UNC BRN			\$21.01	
1c	1969-D		BU RED			\$17.67	
1c	1969-D		CH BU RED			\$27.27	
1c	1970		BU R&B		\$10.35		\$19.28
1c	1970-D	D	UNC BRN			\$11.82	
1c	1970-D		UNC BRN			\$19.09	
1c	1970-D		BU RED			\$10.00	
1c	1970-D		GEM BU RED				\$20.45
1c	1971		BU R&B	\$22.72			
1c	1971-D		UNC BRN			\$14.05	
1c	1971-D		ANACS 63 R&B			\$15.51	
1c	1972		UNC BRN	\$13.49			
1c	1972		CH BU RED	\$9.95			
1c	1973	D	UNC BRN			\$41.00	
1c	1973		UNC BRN				\$26.00
1c	1973		BU RED			\$31.01	
1c	1973-D		UNC BRN		\$11.50		
1c	(?7)5-(?)	D	AU				\$0.99
1c	1975-D		BU RED			\$21.49	
1c	1975-D		GEM BU RED	\$12.01			
1c	1977-(?)		GEM BU RED			\$17.99	
1c	1978	D	BU R&B			\$14.03	
1c	1978		CH BU RED		\$9.40		
1c	197(8)		GEM BU RED		\$18.00		
1c	197(9)		XF		\$16.35		
1c	197(9)		UNC BRN			\$9.99	
1c	(19)79-(?)		BU RED			\$13.95	
1c	1980		BU BRN			\$1.60	
1c	(1981)-(?)	D	UNC BRN			\$7.51	
1c	1982 LD CU		CH BU R&B	\$8.00			
1c	1982 LD CU		BU RED		\$5.50		
1c	1982 SD CU		BU R&B		\$4.99		
1c	1982 SD ZN	C	BU		\$11.50		
1c	1983	D	BU R&B			\$6.85	
1c	1983		BU R&B			\$3.51	
1c	1983		BU RED	\$5.50	\$6.91		\$4.40
1c	1983		CH BU RED		\$14.99		
1c	198(3)		GEM BU RED		\$7.01		
1c	1983		ANACS 63				\$13.00
1c	1983		NGC 64 RED			\$17.50	
1c	1983-D		BU RED			\$9.95	
1c	1983-D		NGC 63 R&B			\$29.76	
1c	1984		AU			\$6.01	
1c	1984		BU R&B	\$3.99	\$3.99		
1c	1984	D	BU RED		\$3.99		
1c	1984		BU RED	\$4.35	\$10.38		
1c	1984		CH BU RED			\$9.50	
1c	1984		GEM BU RED			\$8.50	
1c	1984		NGC 64 R&B			\$15.00	
1c	1984-D		GEM BU RED			\$20.50	
1c	1985-(?)		UNC BRN			\$3.80	
1c	1985		UNC R&B	\$7.00	\$4.36		
1c	1985		BU R&B			\$5.01	
1c	1985	D	BU RED			\$3.99	
1c	1985		BU RED			\$11.01	
1c	1985		CH BU R&B	\$3.76	\$12.99		
1c	1985		GEM BU RED			\$2.50	
1c	1986		UNC BRN			\$6.13	
1c	1986		UNC R&B			\$8.00	
1c	1986		BU R&B	\$2.25	\$8.39		
1c	1986	D	BU RED			\$4.24	
1c	1986		BU RED		\$6.35	\$4.94	
1c	1986		CH BU RED				\$14.99
1c	1987	D	UNC R&B			\$3.99	
1c	1987		UNC RED			\$5.78	
1c	1987		BU R&B	\$3.62	\$5.25		
1c	1987-(?)		UNC BRN			\$5.52	
1c	1988	D	BU R&B			\$5.55	
1c	1988		BU R&B			\$8.85	
1c	1988		CH BU RED	\$4.06			
1c	1988-(D)	D	UNC			\$18.50	
1c	1989		GEM BU RED			\$10.99	
1c	1989-D		AU			\$8.10	
1c	1989-(D)	D	CH BU R&B				\$10.50
1c	1989-P		CH BU R&C			\$13.00	
1c	1990	D	BU BROWN			\$5.75	
1c	1990		GEM BU RED			\$10.50	
1c	1990		NGC 65 RED		\$6.57		

DENOM	YEAR	NOTES	GRADE	LESS-11%	11%-35%	36%-75%	OVER 75%
1c	1990-D		GEM BU RED			\$24.99	
1c	1990-(?)		GEM BU RED			\$7.99	
1c	1993		UNC BRN			\$14.06	
1c	1993-(?)		BU RED			\$2.99	
1c	1993		GEM BU RED			\$14.18	
1c	1993-D		GEM BU RED				\$9.95
1c	1994-D		GEM BU RED			\$24.99	
1c	1995		GEM BU RED	\$10.57			
1c	1995-D		BU R&B			\$9.95	
1c	1995-D		GEM BU RED			\$13.99	
1c	1996-D		BU RED			\$9.95	
1c	1996-D		GEM BU RED			\$14.99	
1c	1997		GEM BU RED			\$13.99	
1c	199(7)		CH BU RED			\$9.99	
1c	1998		NGC 65 RED	\$12.50			
1c	1999		ANACS 65 RED		\$13.15	\$5.50	
1c	1999		PCGS 65 RED		\$22.49		
1c	2000		PCGS 65 RED		\$19.50		
1c	2000		SGS			\$15.50	
1c	2003		GEM BU RED	\$15.30			
1c	2003-D		GEM BU RED	\$10.50			
1c	2004-D		PCGS 66 RED			\$585.00	
3c	1865		NGC 12	\$295.00			
5c	(1890)		PCGS 12	\$178.50			
5c	1896		FINE		\$181.49		
5c	(19)05		VF	\$232.50			
5c	1917-(?)		PCGS 64			\$1,979.00	
5c	1889	D	NCS FN	\$113.60			
5c	1902	D	NCS VF	\$128.50			
5c	1924		PCGS 58	\$499.00			
5c	1936	C	XF	\$142.50			
5c	1940		UNC	\$112.50			
5c	1940-S		UNC			\$610.00	
5c	1966		BU	\$12.50			
5c	1973	D	BU		\$25.00		
5c	1974		BU	\$17.05		\$25.59	
5c	1975	D	UNC			\$20.38	
5c	1975		GEM BU			\$34.50	
5c	(?7)5-D		GEM BU			\$18.38	
5c	1976	D	UNC			\$17.00	
5c	1978		AU		\$26.51		
5c	1978		BU			\$34.00	
5c	(?7)8		BU				\$12.51
5c	1979		CH BU	\$2.01			
5c	1980-P		UNC			\$8.60	
5c	1980-P		BU			\$23.06	
5c	1980-P		ANACS 60			\$27.99	
5c	1982-P	D	BU			\$30.00	
5c	1983-P		BU	\$10.00		\$12.49	
5c	1983-P		GEM BU	\$10.51			
5c	(1)983-P		UNC			\$16.50	
5c	1984-D		CH BU			\$16.08	
5c	1984-P		CH BU			\$16.54	
5c	(?8)5-D		BU				\$15.00
5c	1988-P		BU			\$24.07	
5c	1989-P		BU			\$15.00	
5c	1988-P		GEM BU		\$13.39		
5c	1989-P		GEM BU		\$21.55		
5c	1990-P		BU		\$22.59		
5c	(?9)1-P		ICG 65			\$16.50	
5c	(?9)3-P		BU				\$8.60
5c	(?9)3-P		GEM BU			\$11.51	
5c	1994-P		CH BU			\$15.50	
5c	(199)4-P		BU		\$8.60		
5c	1995-P		GEM BU	\$7.50			
5c	(?9)5-P		ANACS 63				\$24.99
5c	1996-D		CH BU			\$15.00	
5c	1996-D		GEM BU			\$21.00	
5c	1996-P		BU			\$8.60	
5c	1997-P		BU	\$10.05			
5c	1998-P		BU			\$15.00	
5c	1998-P		GEM BU		\$5.51		
5c	1999-D		BU			\$11.75	
5c	1999-D		CH BU			\$14.11	
5c	1999-D		GEM BU			\$15.00	\$18.52
5c	1999-(D)		GEM BU				\$8.98
5c	1999-D		ANACS 63			\$17.75	
5c	(?9)99-D		GEM BU			\$11.00	
5c	1999-P		CH BU			\$9.50	

# Off-Center Errors

DENOM	YEAR	NOTES	GRADE	LESS-11%	11%-35%	36%-75%	OVER 75%
5c	19(99)-P		AU	\$2.75			
5c	2000-D		GEM BU			\$14.16	\$6.05
5c	(2)00-D		GEM BU			\$12.62	
5c	20(00)-(D)		GEM BU		\$4.99		
5c	(?0)00-D		GEM BU				\$13.01
5c	(?)00-D		GEM BU			\$6.50	
5c	2000-P		GEM BU		\$10.00		
5c	2001-D		UNC			\$11.50	
5c	2004-P L&C		UNC	\$511.01			
10c	1890		FINE		\$676.00		
10c	1942-(?)		PCGS 64		\$272.88		
10c	1944		AU	\$50.50			
10c	1964		ANACS 61	\$69.85			
10c	1964-(?)	D	BU			\$87.03	
10c	1964-(?)		BU		\$76.00		
10c	1964-(?)		PCI 63				\$98.03
10c	1965	D	BU		\$24.39		
10c	1972-D		NGC 64			\$35.02	
10c	1973		CH BU			\$27.77	
10c	19(77)		UNC	\$20.49			
10c	1979		BU			\$10.49	
10c	1979		CH BU	\$9.99		\$21.45	
10c	1983-D	D	BU			\$12.09	
10c	19(87)-P		GEM BU	\$6.99			
10c	198(8)-D		BU			\$17.27	
10c	1990-D		BU			\$18.52	
10c	199(0)-P		GEM BU		\$14.39		
10c	1991-(P)		GEM BU			\$22.01	
10c	1993-D		BU			\$17.39	
10c	1994-P		BU	\$9.99			
10c	1994-P		CH BU		\$2.26		
10c	1994-P		PCGS 64			\$29.78	
10c	1996-P		CH BU		\$17.99		
10c	1996-P		GEM BU			\$13.00	
10c	1996-P	D	BU			\$10.49	\$28.00
10c	1998-(P)		UNC			\$8.05	
10c	1998-P		UNC	\$4.99			
10c	1998-P		GEM BU		\$10.00	\$14.27	
10c	1998-P		NGC 64			\$22.50	
10c	1999-D		BU	\$7.06			
10c	1999-P		BU		\$9.95		
10c	1999-P		GEM BU			\$19.00	
10c	199(9)-P		GEM BU	\$5.00			
25c	(1966)		AU	\$10.00			
25c	1974	D	BU	\$8.95			
25c	1974		PCGS 65		\$41.00		
25c	(1974)		GEM BU	\$15.50			
25c	(1976)	C	NCS UNC	\$35.00			
25c	(1976)		GEM BU	\$39.99			
25c	1978		XF	\$5.51			
25c	1979		AU	\$7.50			
25c	1980-P		AU	\$2.00			
25c	1981-P		UNC		\$34.95		
25c	1981-P		ANACS 61	\$8.49			
25c	(?)81-P		AU		\$34.00		
25c	(1981)-P		AU	\$20.55			
25c	(1981)-P		UNC	\$9.25			
25c	(1983)-P		CH BU		\$48.89		
25c	(19)83-P		UNC		\$32.00		
25c	(?83)-P		UNC	\$19.00			
25c	1983-P		VF	\$4.99			
25c	1983-P	D	AU	\$23.05			
25c	1983-P		UNC	\$15.19			
25c	1983-P	D	UNC		\$15.24		
25c	1983-P		BU	\$47.00			
25c	1983-P		CH BU	\$9.95			
25c	1983-P		ANACS 63	\$16.50			
25c	1984-D		UNC		\$52.89		
25c	1984-P		UNC		\$18.83		
25c	1984-P		GEM BU	\$21.00			
25c	(1984)-P		XF	\$8.51			
25c	(1984)-P		ANACS 60	\$29.95			
25c	1984-P		NGC 63		\$46.00		
25c	1985-P		AU	\$6.50			
25c	1985-P		CH BU	\$10.50			
25c	1986-P		GEM BU	\$21.66			
25c	1987-P		AU	\$17.05			
25c	(19)87-P		UNC		\$26.99		
25c	1988-D		GEM BU		\$21.27		

DENOM	YEAR	NOTES	GRADE	LESS-11%	11%-35%	36%-75%	OVER 75%
25c	(19)88-P		AU	\$5.99			
25c	1988-P		BU			\$36.02	
25c	1988-P		GEM BU			\$26.00	
25c	(1989)-P	D	AU	\$10.55			
25c	1989-P		AU			\$15.95	
25c	1989-P		BU		\$7.49		
25c	1991-P		BU		\$6.36		
25c	(1992)-P		BU	\$5.00			
25c	1993-P		BU			\$58.88	
25c	1995-D		GEM BU				\$69.76
25c	1995-P		GEM BU			\$34.00	
25c	1995-(?)		GEM BU				\$46.52
25c	1998-D		GEM BU	\$16.06			
25c	1998-D		NGC 65	\$30.01			
25c	1998-P		BU	\$10.25			
25c	1998-P		GEM BU			\$32.00	
25c	1998-P	D	BU			\$13.01	
25c	1998-(?)		UNC				\$44.00
25c	1999-P		GEM BU	\$9.05			
25c	DE (?) -D		BU				\$227.50
25c	DE (?) -D		SEGS 64				\$188.90
25c	PA 1999-D		UNC	\$39.99			
25c	PA (?)	D	BU				\$138.06
25c	PA (?)		GEM BU				\$102.61
25c	PA -P		PCGS 66			\$260.00	
25c	NJ 1999-P		BU		\$132.49		
25c	CT 1999-D		PCGS 55		\$38.82		
25c	CT 1999-P		UNC		\$39.08		
25c	GA		BU				\$45.00
25c	GA		GEM BU				\$93.50
25c	CT 1999-P		ANACS 60	\$28.88			
25c	MA 2000-P		BU	\$53.00			
25c	NH 2000-D		PCGS 64	\$30.17			
25c	NH 2000-P		BU	\$41.57			
25c	NH 2000-P		PCGS 65	\$37.24			
25c	NH 2000-P		PCGS 66	\$41.00			
25c	NH 2000-P		PCGS 67			\$145.00	
25c	NH (2000)-P		BU			\$97.00	
25c	NH 20(00)-P		BU			\$112.25	
25c	NH 20(?) -P		PCI 65			\$88.00	
25c	NH ND-P		UNC			\$127.50	
25c	NH ND-P		BU			\$109.99	
25c	MD 2000-P		NGC 66			\$76.02	
25c	VA 2000-P		PCGS 58	\$18.50			
25c	VA (2000)-P		CH BU			\$200.00	
25c	SC 2000-P		BU	\$43.75			
25c	NC 2001-P	D	UNC	\$15.69			
25c	NC 2001-P		UNC	\$32.75			
25c	NC 2001-P		BU	\$31.00			
25c	NC 2001-P		CH BU	\$40.50			
25c	NC 2001-P		NTC 66	\$26.99			
25c	NC 2001-P		PCGS 65	\$41.00			
25c	AL 2003-P		NTC 66	\$40.00			
25c	(1976)		BU	\$57.01			
50c	(1976)		PCGS 62	\$225.50			
50c	1983-P		BU			\$226.16	
50c	1988-P		UNC	\$129.06			
50c	1990-P		UNC	\$63.00		\$224.72	
50c	(1990)-P		UNC	\$103.50			
50c	(1)990-P		ANACS 63			\$255.00	
50c	1995-P		UNC			\$211.50	
50c	1995-P		PCGS 64	\$125.00			
1\$	1972-D		BU	\$86.01			
1\$	1977-D		PCGS 65	\$152.50			
1\$	1978		UNC	\$113.61			
1\$	1978		ANACS 64	\$235.00			
1\$	1978		PCGS 60	\$149.00			
1\$	1978-D		PCGS 64	\$115.00			
1\$	1979-P		BU	\$60.50			
1\$	1979-P		ANACS 60	\$51.00			
1\$	1979-P		ANACS 65	\$66.00			
1\$	1999-P		NGC 66			\$256.00	
1\$	1999-P		PCGS 66				\$468.00
1c	ND INDIAN		GOOD			\$154.07	
1c	ND INDIAN	D	VF				\$211.50
1c	ND INDIAN		PCGS 25			\$260.55	
1c	ND WHEAT	D	AU			\$16.30	
1c	ND WHEAT		UNC R&B				\$20.49
1c	ND WHEAT	D	BU BRN				\$22.49

# “Around The World”

- Updating Activity In and Around Error World Groups -

by Jim Archibald - EW Founder

Error World Groups continue the steady growth and coin collecting is still a hot topic. The current statistics for EW Groups as of 4/13/04 are as follows:

EW1 - Error World - 111 members (system crash)  
EW2 - Error World 2 - 501 members  
EW3 - Variety Coins - 263 members  
EW4 - U.S.Coin Collecting - 608 members  
EW5 - World Coin Collecting - 183 members

Total - 1,566 Error World Members

On August 24th 1999 a small group of Internet coin collectors got together in a Yahoo! Club which specialized in error coin collecting. In August 2004 we celebrated our 5th Anniversary

and it was a great success. We have many happy members who have or will receive prizes. Here's a list of winners by club name that have already won:

*emptyscull2, dlsharp, kdmay48, rwitharm, grasshopper04943, Astronaut\_Coin\_Collector, andrewsnovell, yobro54, tymothybates, Smitty, Dee, thegasman821, snakebro, dbldeye, loucoins, barberman, rockyphila, Goose, cwperry, ukgeezer61, mickkis010, coinnut4, Jake\_Tuba, preacherbear, racegirl032, chuckylucky4, nomorehoneydos, td51730, chuck-1956, kakaratt, jnd1955, JimB, marko72760, poorboycoins, my\_errors, wxrbuff2, lalasd4, starbque, desktoplinux, Dinosaur,rottnrog, wheathhead58, walkermntmanus, blt\_mb.*

We also had the following door prize winners in our weekly chat rooms:

Winner	Room	Prize	Donor
<b>work4coins - Grand Prize Winner</b>	<b>EW1</b>	<b>Lincoln Cent Fold-over</b>	<b>Mike Byers (Patron)</b>
Astronaut Coin Collector	EW4	1/10th oz Gold Eagle	twobits85
JD1955	Half_Zware's	1972-S Silver Ike MS66	Laz
BrneyedEagle20051	EW4	1961 Proof Set	Laz
twobits85	Coin Nuts Place	1974-S Silver Ike MS66	Laz
td51730	EW5	1940 Irish 1P XF	Laz
Surok98	EW5	1962 Proof Set	Laz

**ERROR**  
**WORLD**

Join the *hottest*  
**Error Coin Club on the Net!**

e r r o r w o r l d c l u b . o r g



# Another Martha Washington Test Piece Discovered

by Saul Teichman (uspatterns.com)

This design has become the U.S. Mint's all-purpose design for testing new compositions and planchet sizes both inside the Mint and outside by companies contracted by the Mint including IDX Inc, PMX Industries and Olin Brass Corporation.

This piece is struck with what is believed to be Braille in the obverse fields, and was probably struck by Olin Brass.



## Saul Teichman's Want List

Saul.Teichman@ey.com

I am looking for the following off-metal errors:

- |                                                |                                                             |
|------------------------------------------------|-------------------------------------------------------------|
| Wartime Nickel on a Copper Cent planchet.      | Kennedy Half on a Sacagawea Dollar planchet - if it exists. |
| Bicentennial Half on a Cent planchet.          | Ike Dollar on a Cent planchet.                              |
| Bicentennial Half on a Nickel 5 Cent planchet. | Ike Dollar on a Nickel 5 Cent planchet.                     |
| Bicentennial Half on a Dime planchet.          | Ike Dollar on a Dime planchet.                              |
| Bicentennial Half on a Quarter planchet.       | Ike Dollar on a Quarter planchet.                           |
|                                                | Susan B. Anthony Dollar on a Sacagawea Dollar planchet.     |

# Spectacular Buffalo Nickel Off-Center on Cent Planchet

by Mike Byers (mikebyers.com)

Multiple errors on type coins such as the Buffalo Nickel are unheard of. This 1920 Buffalo Nickel was struck 40% off-center on a Cent planchet.

This is one of the most spectacular and dramatic major mint errors of all time. The eye appeal, strike, positioning of the off-center design, condition of the coin and rarity all combine to make this the centerpiece of any mint error collection.





# A Report on the ANA and Mint Errors

by Mike Byers (mikebyers.com)

The coin market continues its momentum and has been in a bull market for several years. Mint errors continue to be one of the strongest segments of numismatics today. In the good old days, I could walk the rows of a coin show, finding many mint errors to purchase among the other dealers. Those days are gone forever.

Today, there are only a few major mint errors displayed at coin shows in the showcases of regular dealers of U.S. and World coins. And if they happen to have an exciting piece, they want all of the money or would be just as happy holding on to it.

With the explosion of the internet, information passes with the blink of an eye. Everyone now knows the true value of major error coins, and how truly rare and desirable they are. The ANA was no exception. This is the 6th major show in the last year where the bourse room has literally been absent of major mint errors.

This is both a blessing and a curse. When the supply dries up due to an extreme demand, the prices increase. But it becomes harder to purchase new mint errors for customers and to supply my inventory. The other error dealers feel exactly the same since we are all in the same boat.

I have even approached several well known mint error collectors and have offered to purchase their ENTIRE collection on the spot. Not only do they NOT want to sell, they are themselves searching for additional mint errors to add to their collections. I even asked Fred Weinberg to sell me his personal mint error collection. He refused, but I was fortunate enough last year to purchase a couple of mint errors from his collection including the 1874 Gold \$1 Type 3 Full Brockage MS 62 PCGS.

The Heritage Signature Auction at the ANA was the only bright moment for mint error collectors and dealers. There was a very exciting collection that was auctioned off including several unique and dramatic major mint errors. This was an opportunity that I could not pass up, so I tried to purchase the best mint errors in the sale.

I spent over \$100,000 and bought 21 different major errors in the Heritage sale, including several that are absolutely incredible:



*Indian Cent struck on a Half Dime planchet with a uniface obverse PCGS MS 63*



*1920 Buffalo Nickel struck 40% Off-Center on a cent planchet PCGS MS 64*



*1876 Indian Cent struck on a 3 Cent planchet NGC MS 64*



*1904 \$20 Lib Double Struck MS 60 ANACS*

On the bourse floor, and through contacts that I have set up prior to the show, I was fortunate enough to spend an additional \$75,000 and purchased a Drape Bust Dollar struck 15% Off-Center, an 1855 Charlotte \$5 with a huge Cud on the reverse MS 61 NGC and several rare Transitionals.

For the size and importance that the several auctions, pre-ANA, and the ANA represented in terms of the ability to purchase mint errors, this year was marginal. I was hoping that the higher prices that mint errors have been selling for would drive fresh new material and collections into the marketplace.

This has not been the case. In fact, just the opposite has occurred. More collectors are collecting mint errors. Even dealers are trying to purchase errors for their inventory and personal collections. Very few are willing to sell. Another interesting fact is that I have several collectors and investors who have the same philosophy that I do. They have specifically told

me that they are willing to purchase entire collections to obtain the pieces that they want.

These are fascinating times in the mint error segment of numismatics. Virtually nothing new is being discovered. The U.S. Mint has implemented new security procedures and also is using Schuller Presses which are producing few mint errors.

Most expensive major mint errors are in very strong hands. These are off the market and are not for sale or are priced at retail levels. There are many want lists that go unfilled and many collectors are waiting to jump at new collections and exciting pieces.

The error coin market has changed drastically. It is now divided into 2 very distinct categories. The first category are the collectors and dealers who look for die varieties and inexpensive errors. They buy and sell like they always have. The market hasn't really moved at all for these types of mint errors. They collect for the fun of it, are very serious at what they do, and consider what they do their "hobby". The two publications that support this segment are *Errorscope*, and *Error Coin Trends Magazine*. These two magazines are popular and are fun to read.

The other category is the major striking errors including off-centers, die caps, double strikes, brockages and off-metals. These five error types have exploded in price and are driving the market. This is well supported by dealers and collectors with virtually unlimited funds. They have the ability to purchase WHATEVER comes along on the spot. This includes regular dealers who dabble in mint errors, major error dealers like myself and several others, a handful of serious collectors and several coin investors who will snap up a six figure mint error deal without even blinking an eye. To this group, mint errors is not their "hobby." They are serious investors and collectors and major money is involved. The publication that supports this segment is *Mint Error News Magazine*.

The future is very exciting for mint errors. It is now a fully recognized and respected area of numismatics. This is both good for the collectors who consider it their "hobby" and for the dealers, serious collectors and investors who are spending considerable money.

# BYERS NUMISMATIC CORP

## MIKEBYERS.COM



**The Largest Dealer of the World's Rarest Mint Errors™**  
U.S. ERRORS • WORLD & ANCIENT ERRORS • DIE TRIALS • CURRENCY ERRORS

### BUYING & SELLING

#### MAJOR U.S. MINT ERRORS

- ANACS, PCGS, NGC, ICG, SEGS & RAW
- U.S. 1¢ THRU \$50 ERRORS
- 19TH AND 20TH CENTURY TYPE COINS:  
**ALL DENOMINATIONS**
- MODERN COINS: STATES QUARTERS, KENNEDY HALVES, IKE, SBA AND SACAGAWEA DOLLARS
- MAJOR AND DRAMATIC ERRORS FROM \$500 TO \$100,000
- DIE TRIALS, HUB TRIALS, SPLASHERS, UNIFACE AND OFF-METAL STRIKES

#### U.S. CURRENCY ERRORS

- ESPECIALLY ERRORS ON \$2, \$50, \$100 & \$500 NOTES
- DRAMATIC AND UNIQUE PRINTING & CUTTING ERRORS FROM \$500 TO \$10,000
- DOUBLE DENOMINATIONS, MULTIPLE IMPRESSIONS & MULTIPLE ERRORS
- LARGE SIZE NOTE ERRORS

#### WORLD GOLD & SILVER ERRORS

- ANACS, PCGS, NGC, ICG & RAW
- ALL DENOMINATIONS FOR MAJOR WORLD COUNTRIES
- ESPECIALLY SWISS, GERMAN, ENGLISH, FRENCH, CANADIAN & MEXICAN
- ALL 12 COUNTRIES IN THE EUROPEAN MONETARY UNION (EUROS)
- ALL COUNTRIES IN THE BRITISH COMMONWEALTH
- MEDIEVAL THRU MODERN
- MAJOR AND DRAMATIC ERRORS FROM \$500 TO \$50,000
- DIE TRIALS, SPLASHERS, UNIFACE AND OFF-METAL STRIKES

#### ANCIENT ERRORS

- ANACS, ICG & RAW
- ALL GOLD DENOMINATIONS
- 500 BC TO 950 AD
- GREEK, ROMAN AND BYZANTINE COINAGE
- MAJOR AND DRAMATIC ERRORS FROM \$500 TO \$10,000

## MIKE BYERS

P.O. Box 5090, San Clemente, CA USA 92674  
Office: 949-276-7072 • Fax: 949-276-7073

Fed Ex Address only: 1001 Avenida Pico #C 612, San Clemente, CA 92673  
E-Mail: [mike@mikebyers.com](mailto:mike@mikebyers.com) • Website Design: [sam@mikebyers.com](mailto:sam@mikebyers.com)

Mike Byers, Professional Numismatist since 1978

Byers Numismatic Corp. A California Corporation Since 1980

Mike Byers is a consultant to ANACS for Mint Errors



# Double Struck 1924 Standing Liberty Quarter

by Mike Byers (mikebyers.com)

This dramatic and extremely rare double struck Standing Liberty Quarter was authenticated and certified by ANACS a few years ago. It was in a collection which was recently sold. I was offered this major mint error and immediately purchased it.

The second strike was struck off-center on the reverse. It is extremely dramatic with both eagles visible. The obverse was indented by a blank planchet during the second strike.

This is the most dramatic of three known double struck Standing Liberty Quarters. It is very rare to find any major mint errors in the Standing Liberty Quarter series. It would be the highlight of a mint error collection or a Standing Liberty Quarter collection.



# Unique 3 Piece Cent and Dime Mated Set

by **Tim Bullard (errorcointrader.com)**

A very small group of PROOF errors recently came from a collection that was auctioned by the State of California. The U.S. Secret Service inspected and released this collection to the State of California determining that it was legal to own. The State of California then auctioned the collection and it has been dispersed since the sale. In this collection were a few mint state major errors including this unique mated 3 piece off-metal brockage set.

A Cent struck on a Dime blank, which was intended to strike proof Dimes, remained in the collar and created two brockages on the next two blanks. These blanks were also Dime blanks and not Cent blanks. This is an incredible combination of multiple errors.







# NORTHEAST NUMISMATICS INC. RARE COINS · PERSONAL SERVICE

Northeast Numismatics  
10 Concord Crossing, Ste. 220  
Concord, MA 01742  
800-449-2646  
[www.northeastcoin.com](http://www.northeastcoin.com)

Northeast Numismatics has an impressive inventory of over 1,200 U.S. and foreign coins. We have a strong selection of mint errors, both U.S. and foreign. And we carry every area of United States coinage from colonials through rare gold including type, commemoratives, silver dollars and much, in addition to our extensive inventory of world coins.

High quality "fresh" coins are what we are known for and take pleasure in offering. We constantly are hearing from our customers about our excellent prices and high customer service. 2003 is our 39th year of business, so order with complete confidence. Also, please keep in mind that we are always buying coins of all kinds, certified and uncertified, to fill our want lists.

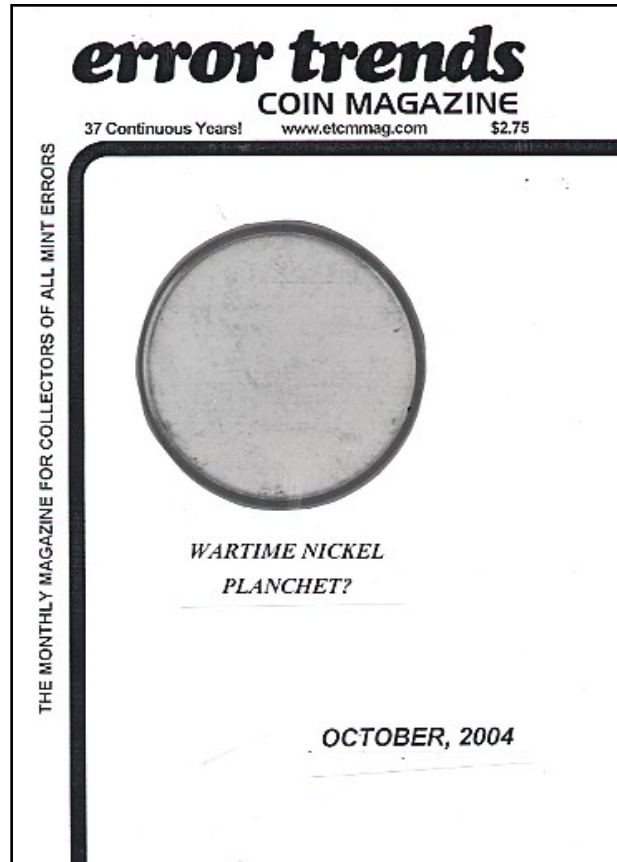
# error trends

## COIN MAGAZINE

Dedicated to serving the error coin hobby.

- Error coins
- Error Coin Trend Prices (Eight illustrated pages)
- Mistakes
- Mis-strikes
- Off-center errors
- Brockages
- Partial Collars
- Die Caps
- Cuds
- Missing Clad Layers

... and more!



## Subscribe to Error Trends Coin Magazine

**error trends** PO Box 158  
COIN MAGAZINE Oceanside NY 11572-0158

New  
 Renewal

Dear Sirs,  
Please enter my subscription to **error trends**  
COIN MAGAZINE as follows:

1 Year: \$15.00     2 Years: \$28.00     3 Years: \$40.00  
 Single Sample Copy \$2.75 ppd.

NAME \_\_\_\_\_  
ADDRESS \_\_\_\_\_  
CITY \_\_\_\_\_ STATE \_\_\_\_\_ ZIP \_\_\_\_\_ + \_\_\_\_\_

( Be sure to add "zip + four" zip code to assure more rapid mail delivery)

Please make all checks payable to Error Trends Coin Magazine or "ETCM". All payments from other countries in "US Funds" only. Additional postage charges required for other countries. Do not send cash through the mail. Thank you.





# BYERS NUMISMATIC CORP



## MIKEBYERS.COM



### The Largest Dealer of the World's Rarest Mint Errors™

U.S. & WORLD MAJOR MINT ERRORS • DIE TRIALS • NUMISMATIC RARITIES



Unique 1866 \$2½ Struck on a 3 Cent Nickel Planchet  
NGC MS 66



Pair of Indian Head 1¢ Die Caps  
Obverse & Reverse  
PCGS MS 64



Barber Half  
Full Obverse Brockage  
PCGS AU 58 UNIQUE



Unique Set of Four  
Paraguay Gold Overstrikes  
NGC Certified



1921-S Morgan Dollar  
Struck 45% Off-Center  
NGC MS 63



1895-O Barber Dime  
Obverse Die Cap  
PCGS MS 64



1846 J-110A \$5 Obv Die Trial  
Struck on \$2½ Trial  
NGC MS 65 BN



1924 SL 25¢  
Double Struck  
ANACS AU 55



1862 Indian Head 1¢  
Deep Obverse Die Cap  
PCGS MS 62



Unique Set of Three  
Paraguay Gold Overstrikes  
NGC Certified



1887 \$3 Indian Gold Proof  
Triple Struck  
PCGS PR 63



1942 Walking Liberty 50¢  
Struck on Silver 25¢ Planchet  
PCGS MS 65



Unique Jefferson Nickel  
Die Trial  
PCGS Certified



1802/1 \$5 Draped Bust Gold  
Triple Struck Obverse  
ANACS EF 45



1865 2¢  
Deep Obverse Die Cap  
& Brockage



1804 \$2½ Capped Bust To Right  
Double Struck  
NGC Fine 15



1898 Barber 25¢  
Obverse Die Cap & Brockage  
PCGS MS 62



1945-S WL 50¢  
Struck on El Salvador 25¢ Planchet  
NGC MS 63 UNIQUE



1806 \$5 Capped Bust Triple Struck  
Rotated 90°  
PCGS AU 50



1865 \$1 Indian Gold Proof  
Triple Struck Reverse  
PCGS PR 64 Cameo



1920 Buffalo Nickel  
Struck on Copper Planchet  
NGC AU 55 UNIQUE



1874 \$1 U.S. Gold T3  
Full Brockage  
PCGS MS 62 UNIQUE



1873 \$20 Closed 3 J-1344  
Double Struck  
NGC PF 61 RB



1901/0-S \$5 Liberty Gold  
10% Off-Center  
PCGS AU 55



1853 U.S. Assay Gold \$20  
Double Struck  
NGC AU 55



1965 English Penny  
Struck on Gold Planchet  
PCGS MS 62



1875-CC \$20 Liberty Gold  
Partial Collar  
NGC MS 62



Pair of Barber Dime Die Caps  
Obverse & Reverse  
PCGS AU 55 UNIQUE



Franklin Half Dollar  
Struck on 1948 Cent  
NGC MS 64 BN



1910 Lincoln Cent  
Uniface Test Strike  
PCGS AU 58



1904 \$20 Gold  
Double Struck  
ANACS MS 60 Proof-Like



Indian Cent on Half Dime Planchet  
Uniface Obverse  
PCGS MS 63



1851 3¢ Obverse & Reverse  
Die Trials  
Struck on Cardboard



1864 2¢ Obverse Die Cap  
Mated With Brockage  
PCGS MS 62



Martha Washington Dollar Test Piece  
Clad Plan w/Exp Edge  
NGC MS 64



1869 Indian Cent  
Struck on Silver Dime Planchet  
PCGS AU 55



1856 Large Cent Obverse Cap/  
Brockage Reverse  
Gem BU



Martha Washington Dollar Test Piece  
Sac Plan w/Exp Edge  
NGC MS 64



1906-D \$20 Liberty Gold  
Broadstruck  
NGC AU 58



1920 SL 25¢  
Struck on Peru 20C Planchet  
NGC MS 60 FH Unique



1838 \$5 Die Trial Splasher  
J-A1838-6  
PCGS MS 65 UNIQUE



1866 Shield Nickel with RAYS  
Struck on Indian Cent Planchet  
PCGS XF 45

# Unique Morgan Dollar Struck 20% O/C & Brockage Reverse

by Tim Bullard ([errorcointrader.com](http://errorcointrader.com))

This unique off-center brockage Morgan Dollar was originally in the Harrison Phillips Collection auctioned by Bowers & Merena at the 2003 ANA in Baltimore. This is a spectacular major mint error in the Morgan Dollar series. It is unique and the only known brockage. Since it is quite circulated it was obviously carried as a pocket piece and it is amazing that it survived. Because of its unique status, size and dramatic appearance, it was the favorite of many mint error collectors and will be talked about for years to come.





# Two Headed Muling

by Saul Teichman (uspatterns.com)

This two-headed muling, a business striking - not a proof, was recently rediscovered and was the subject of an article in the September 18, 2000 edition of Coin World.

This coin is probably the piece which was sold as lot 1532 of S. H. Chapman's sale of the Gable collection where it realized \$20.00 - a huge sum for that time. It was purchased by Edgar H. Adams of Adams and Woodin fame.

It was later listed as AW318A in Green and Hewitts 1940 Priced Catalog of US Pattern Coins. It was also listed in the Mule section of Taxay's 1976 Comprehensive Encyclopedia.

We have assigned it the following Judd and Pollock numbers J229A/P273A. It is important to note that a followup article in the October 2 edition of Coin World describes this piece as a possible mint error.



Photo courtesy of Superior Galleries

# Fred Weinberg & Co.

Dealer in Major Mint Error Coins & Currency



[fredweinberg.com](http://fredweinberg.com)



## BUYING MAJOR ERROR COINS & CURRENCY

If you have a single major mint error coin, either a recent issue or an older type coin, or 1,000 Off-Center Cents, please contact us. We stock over 60,000 Major Mint Error Coins and constantly need to purchase Major Error Coins for our clientele (please note that we do not deal in or buy Die Varieties, Damaged Coins, Doubled Dies, Filled Dies, or Die Cracks).

We do buy Major Mint Errors - such as Off-Center, Off-Metals, Double Strikes, Clad Layers missing, Die Caps, Double Denomination, etc.

Because of the many differences in each Error Coin we request that you send scans of your coin(s) to us for our examination and firm offer.

Postal Correspondence:

Telephone/Fax:

16311 Ventura Blvd.

Suite #1298

Encino, California 91436

Phone: (818) 986-3733

Toll-free: (800) 338-6533

Fax: (818) 986-2153

e-mail: [fred@fredweinberg.com](mailto:fred@fredweinberg.com)

# fredweinberg.com

DOWNLOAD NOW AT MIKEBYERS.COM

BYERS NUMISMATIC CORP  
MIKEBYERS.COM



The Largest Dealer of the World's Rarest Mint Errors™

U.S. ERRORS • WORLD & ANCIENT ERRORS • DIE TRIALS • CURRENCY ERRORS

# Mike Byers' 2004 Catalog

Featuring

## U.S. & World Major Mint Errors and Die Trials

*This catalog features almost 400 rarities with a value of nearly \$4 million.*



UNIQUE



UNIQUE



UNIQUE



TWO KNOWN



UNIQUE



# The 2004 ANA Convention And The Error Coin Market

by Rich Schemmer - richerrors.com

The 2004 ANA Convention held in Pittsburgh has come and gone. Error coins sales are stronger than ever. A lack of fresh material on the bourse floor kept the collectors flocking to the attending Error dealers tables, where business was very brisk. There were very few errors in the showcases of regular coin dealers. They had high price tags on most of their merchandise and were eager to purchase new errors if any were offered.

This lack of supply and increase in demand in error coins only fuels this BULL market that we have been in for the last few years. It will also cause continued increase in prices as finding better errors is becoming extremely difficult.

Off Metals seems to be leading the pack for price increases as many are hitting all time highs. Double denominations are frequently seen over \$1,000, where only a year ago they were averaging \$700. At a recent show I offered a NON-Error dealer \$250 for a 2004-D 40% Off Center cent! He refused. TWO HUNDRED & FIFTY DOLLARS, just 4 years ago when plenty could be found you could buy all you wanted for TWO Dollars each. WOW!!

Type coin errors are extremely strong as more and more collectors enter the market. Especially any that have nice Eye Appeal and are graded XF or higher. Naturally, grades of MS 63-66 draw huge prices for their superior eye appeal. Large Cent, Indian Cents,

Early (Wheat) Lincoln cents, Buffalo Nickels, Mercury Dimes, OH! heck just look thru the Red book and if that TYPE coin has a MAJOR error it is be sought after! Prices are really surging on these.

So what's a little sluggish in errors, Clips (Incomplete planchets), Cuds (broken dies), Double Dies (Not in red book) are all a bit slow. BUT! this may be the perfect time to start buying some? Their time is coming.

State Quarter errors are strong as few can be found that could be called Major! At the ANA Convention a few 2004 Texas double strikes saw daylight for a brief second and sold for "4" figures each.

A few collectors are commenting that they are worried about the market softening. Believe me this market is rock strong and now is a good a time as ever to dive in. Prices should continue to show strong returns on better eye appealing Major errors. In one year you will be saying "why didn't I buy it back then?" In five years you'll hate to look back at the prices you could have paid! And ten years you probably could have put your kids thru college. Never buy more than you can afford and buy certified errors by the leading certification companies, buy "eye-appealing" Major errors and you will never go wrong. Remember in a BULL market there are few if ANY deals. If offered one, think three times why it's being offered in such a Bull market!

# uspatterns.com

The Society of U.S. Pattern Collectors is dedicated to the study of many of the rarest coins struck at the U.S. Mint: patterns, die trials and experimental pieces.

# U.S. Half Cents

---

## An Undiscovered and Unloved Series

by Raymond Gaudette

Don't you just love a bargain? Don't you love it even more when you can get beauty, history, artistry, variety and rarity at a low price? Yes, I do too and that is the subject of this article, an undiscovered and unloved coin series, U.S. Half Cents.

It was a few years ago, when I was slogging through the on-line auctions looking for bargains and something new to collect, that I discovered the Half Cent series. What an ideal set for collectors to assemble! The series starts shortly after the birth of our nation (1793) and continues to just prior to the start of the Civil War (1861) which almost divided our nation. What an historic period in our nation's history!

*The Old Coin Shop* web site (<http://www.oldcoinshop.com/coinhistory/005c-1793.htm>) describes the half cent as follows:

“Although half cents were issued for more than 60 years, they remained America's unwanted coins. They proved to be of little use, circulated grudgingly if at all, and were often kept in dead storage at the Mint waiting for infrequent orders from the infant nation's banks. Production—sometimes for several years—was often interrupted by shortages of copper and lack of demand. This small denomination may have suffered from identification with the poorest classes: They were supposed to be its biggest users, at least according to Robert Morris, the Revolutionary War financier and one of the architects of the U. S. coinage system. Morris subscribed to the age-old but misguided view that smaller denominations brought

lower prices, allowing the poor to purchase more with their money. Unfortunately, not only did the public have little use for half cents, but for generations, collectors also ignored the little copper coins. Only recently has a birth of interest been sparked, with the publication of new definitive works in the mid-1980s: *American Half Cents, the “Little Half Sisters”* by Roger Cohen and Walter Breen's *Encyclopedia of United States Half Cents* have attracted many new devotees to this long overlooked denomination.”

### BEAUTY

Benjamin Franklin was initially tasked with finding a design that depicted American Liberty. He was quite impressed with Augustin Dupre's Libertas Americana Medal which depicted the spirit of Liberty as a young woman with streaming locks of hair flowing in the winds of freedom. Behind her head Dupre placed a pole supporting the pileus or ancient cap of liberty.

Franklin brought this design to David Rittenhouse, the first United States Mint Director, who chose it for the first half cent.

### VARIETY

For a 64 year run of coins, this series is just packed with varieties. They obviously spent a great deal of time tinkering with the design in order to “get it right” and in so doing created a wonderland for future variety enthusiasts.

There were five “types” of half cents made during their sixty-four year history, with varieties as follows:

Head Facing Left 1793	Liberty Cap 1794 - 1797	Draped Bust 1800 - 1808	Classic Head 1809 - 1836	Braided Hair 1840 - 1857
1793	1794 “Normal Head” 1794 “High Relief Head” 1795 Lettered Edge With Pole 1795 Lettered Edge Punctuated Date 1795 Plain Edge Punctuated Date 1795 Plain Edge No Pole 1796 With Pole 1796 No Pole 1797 I above 1 Plain Edge 1797 Plain Edge 1797 Plain Edge, Low Head 1797 Lettered Edge 1797 Grippped Edge	1802 2/0 Reverse of 1800 1802 2/0 2 <sup>nd</sup> Reverse 1803 Widely Spaced 3 1804 Plain 4 No Stems 1804 Plain 4 Stems 1804 Crosslet 4 stems 1804 Crosslet 4 No Stems 1804 Spiked Chin 1805 Medium 5 Stemless 1805 Small 5 Stems 1805 Large 5 Stems 1806 Small 6 Stems 1806 Small 6 Stemless 1806 Large 6 Stems 1808 8 Over 7	1809 Small o Inside 0 1809 9 Over 6 1811 Wide Date 1811 Close Date 1828 12 Stars 1828 13 Stars	No Varieties

**Table 1. Varieties of Half Cents**

## RARITY

An examination of the reported mintages, according to the 2004 issue of *A Guide Book of United States Coins* by R. S. Yeoman, shows mintages ranging from a low of 1,390 for the 1796 issue to a high of 1,154,572 for the 1809 issue. The remainder of the mintages generally reside in the 50,000 range. This alone would make the coins of any other series incredibly rare! These mintage figures must be tempered, however, by knowledge of the 1857 Great Copper Melt in which literally millions of these unwanted and unloved gems met their demise in the

melting pot, to be reborn as Small Cents. No one kept track of which dates and varieties of half cents were destroyed so no one yet knows the true survival rate of this low mintage series. It is safe to say, however, that this is a very scarce series for the date/variety collector.

As I search at coin shows for these dates/varieties, I frequently hear comments from the dealers that they do not stock these coins because, “Nobody collects them.” This was the action call for me to start a collection as the mintages were small, interest was minimal and the prices were reasonable. Since I have

# U.S. Half Cents: An Undiscovered and Unloved Series from pg. 27

been asking for them at shows (4 years now) I have noticed that some dealers have put up signs indicating an interest in purchasing Half Cents (probably to sell to me).

## THE KEYS

Let's compare the "key" date Half Cents with key dates from other series.

DATE	TYPE	MINTAGE	GRADE	PRICE
1802	Half ¢	20,266	G	\$600
1811	Half ¢	63,140	G	\$350
1825	Half ¢	63,000	G	\$40
1832	Half ¢	51,000	VG	\$40
1857	Half ¢	35,180	VG	\$60
1877	Indian ¢	852,500	G	\$550
1909S	Indian Cent	309,000	G	\$300
1909 SVDB	Lincoln ¢	484,000	G	\$460
1912S	Liberty 5¢	238,000	G	\$125
1913S V2	Buffalo 5¢	1,209,000	G	\$250
1895O	Barber 10¢	440,000	G	\$300
1916D	Mercury 10¢	264,000	G	\$750
1901S	Barber 25¢	72,664	G	\$4,000
1913S	Barber 25¢	40,000	G	\$750
1932D	Washington 25¢	436,800	F	\$125
1932S	Washington 25¢	5,404,000	F	\$125
1897S	Barber 50¢	933,900	G	\$125
1921	L. W. 50¢	246,000	G	\$120
1921D	L. W. 50¢	208,000	G	\$185

Table 2. Comparison of Key Dates

An examination of Table 2 shows what a bargain the Half Cent series is. Taking a look at the reported mintages alone tells us that some of these half cents are close to extinct but sell at a price (if you can find them) that almost anyone can afford! Owning a U.S. coin with a mintage of only 20,000 is beyond most collectors dreams, but in the above table we can see that this is, in fact, very possible for a mere \$600. Imagine being able to buy a coin with a mintage 4.8 times less than the 1909 svdb Lincoln cent at a price of approximately \$100 less than the 1909 svdb! Or a coin with a mintage almost 8 times less than the 1916d Mercury dime for only \$40! Only in the Half Cent series folks! Where have the collectors been? The half cents are not hiding folks, I bid on at least a dozen every week on the on-line auctions! They are a screaming bargain!

## CONDITIONS

Most Half Cents that you come across will have some problems, but that is ok for this series. As reported earlier in this article, half cents were unloved and unwanted and mostly resided in bank vaults. When the great copper melt began, where do you think that they got all those half cents to melt? That's right, they cleaned out the bank vaults of all those Mint State half cents that had been sitting idle for years and *melted them*. The few that survived were lost in the dirt or sitting in someone's canning jars in very worn condition. The few that survived in Mint State condition are generally offered between \$1,000 and \$3,000 with the later dates commanding between \$500 and \$1,000. This is a little rich for my blood, but not completely out of line for some folks.

When the rest of us think of owning a coin that has a reported mintage of 20,000 to 50,000 specimens, how choosey can we afford to be when it comes to condition? Most half cents that we collect for a date/variety set will show some slight porosity (found with a metal detector) or will be somewhat worn due to excessive handling from people using them to purchase goods. This is fine and a very nice set CAN be put together of circulated half cents. The key is patience!

## SOURCES OF HALF CENTS

While not giving away ALL of my secrets, I think it is safe to say that the best place to find Half Cents is at the on-line auctions (at least for me it is). You may find them at the big coin shows, if you can afford to go to FUN or some other big shows, but I would rather spend my money on the coins themselves than on travel expenses and hotel rooms.

Dealers are also a good source. If you establish a good relationship with a reputable dealer, he can be on the lookout for these coins for you while he is on the road. Dealers always buy at the right price so they can often give you a deal.

Coin shops and flea markets have provided me with some nice specimens as I always visit these

places when I am on vacation or visiting friends who live out of state. You never know what you will find when folks clean out their house and throw the odd coins in a “junk box.”

Lastly, don't neglect your coin clubs whether on-line (<http://www.errorworldclub.org>) or local. Other collectors frequently have that odd half cent or two in their collections that they will happily sell or trade for something that they want.

## CONCLUSION

If you want a series to collect that won't break the bank and that will bring you pleasure for

years, this is it. As Rodney Dangerfield would say, “Half Cents don't get no respect.” There is no good reason that collectors should snub this series as it is as collectable as any other series, as I am quickly finding out. I will soon have completed a nearly 200 year old series on a retired person's budget. When assembling YOUR collection of half cents, keep in mind that the total number of complete sets that can be assembled is limited only by the lowest mintage coin in the set. Since we do not know what dates of half cents survived the great copper melt and in what numbers all we can say is that the *maximum* number of sets possible must be based on mintage figures. You **MUST** put your set together while it is still possible to find them!

# SUBMIT YOUR ARTICLE TO MINT ERROR NEWS MAGAZINE

**Please make sure you have copyrights to any content that you submit. Your article may be subject to revision. If you include images with your article, please use a minimum resolution of 300 DPI.**

**Please submit all content to:**

**[editor@minterrornews.com](mailto:editor@minterrornews.com)**



**BYERS NUMISMATIC CORP**



**MIKEBYERS.COM**



**The Largest Dealer of the World's Rarest Mint Errors™**

**U.S. ERRORS • WORLD & ANCIENT ERRORS • DIE TRIALS • CURRENCY ERRORS**

# Consign Your Coins to Mike Byers

## Terms and Conditions

We are offering this service for error collectors and dealers alike. The reason why we are doing this is to promote the error business through the world wide web and to connect error collectors with the coins they have been searching for. In order to post your item on our web site: [byersnc.com](http://byersnc.com), you must agree to the following terms and conditions.

1. All major U.S. mint errors are accepted if they are certified by ANACS, PCGS, NGC or ICG.
2. The approximate value of each item must exceed \$1000.
3. The minimum time for any listing is thirty days.
4. Seller agrees to a seven day return privilege from date of receipt.
5. Seller agrees to use an escrow service if requested by the buyer.
6. We reserve the right to deny or cancel any listing at any time.
7. All listing are subject to prior sale.

Please do not offer us the following:

1. More than two coins bonded together.
2. Caps more than ½ inch high.
3. U.S. Errors that were obviously and intentionally struck as error coins. No impossible mint errors.

We only accept consignments of U.S. Errors that were legitimately found or released thru normal distribution channels.

## Scanning Specifications

1. Scan both the obverse and reverse of the entire holder.
2. Scan with a resolution of at least 300 dpi.
3. Save the picture in jpeg format (jpg).

## Information Requirements

In addition to e-mailing a photo of your item, please include the following information:

1. Name, Address & Phone Number
2. E-Mail Address
3. Asking Price

After your item is listed, we will contact you by e-mail with any offers and questions. Once a price is agreed upon we will handle the entire sale for a 10% transaction fee, which includes all costs (eBay fees, grading fees, webmaster charges, postage and registration fees, insurance, paperwork, etc.).

If you have a Mint Error collection for sale or would like to sell your duplicates and do not want to consign your coin(s), we can purchase your entire collection outright. Please contact us at [mike@mikebyers.com](mailto:mike@mikebyers.com).

Coming In 2004 From Zyrus Press  
A New Book By Mike Byers

From the Publisher & Editor of Mint Error News

# MINT **ERROR** GUIDE

Your Guide to the Most Spectacular Major Mint Errors



DISCOVERIES

AND

PRICE GUIDE



FOR U.S. AND WORLD  
MAJOR MINT ERRORS



AND DIE TRIALS



by **Mike Byers**

Design & Layout: Sam Rhazi

ZYRUS  
PRESS

P.O. 17810  
Irvine, CA 92623  
(888) 622-7823



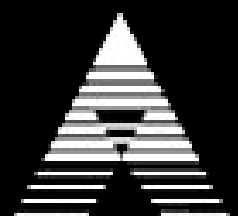
## Extraterrestrial Numismatics

[www.anacs.com](http://www.anacs.com)

ANACS is the Collector's Choice because we know what counts: knowledge, integrity, and service. How much we value coin collecting is evident in our work.

The ANACS team enthusiastically works to advance coin collecting by offering unequalled expertise and developing new services.

This makes ANACS the choice of hobbyists, professional numismatists, and dealers. We are the coin grading service to contact when you want to know all the details about your coin's authenticity and grading.



Collect with passion. ANACS



# Mint Error News Price Guide

This price guide is brought to you by Mint Error News. It has been compiled by many of the top major mint error dealers.

This price guide is a guide. Prices fluctuate due to the date, grade, eye appeal and how dramatic the striking error is. Rarity is also a factor. The price is sometimes based on the rarity and grade of the type of coin as well as how rare the error is. The price can also vary depending on whether two collectors are bidding for the same rare major mint error. When purchasing a mint error, it is important to use multiple resources to determine value, as there are many mint errors that do not fit into one category.

## Proof Errors



Proof coins are struck by technicians who hand feed the blanks into special presses. They are produced, examined, and packaged using extreme quality control. It is very unusual to find major proof errors. A few broadstrikes, off-centers, double strikes in collars and off-metals have been known to be found in sealed proof sets. Proof errors are aggressively sought after by many error collectors.

A very small group of Proof errors recently came from a collection that was auctioned by the State of California. The U.S. Secret Service inspected and released this collection to the State of California determining that it was legal to own. The State of California then auctioned the collection and it has been dispersed since the sale.

Updated August 1, 2004

Denomination	Broadstrikes	Die Trials	Double/Triple Strikes	Off-Center Strikes	Partial Collar Errors
Proof Lincoln Cent	\$1,500 - \$2,500	N/A	\$4,000	\$1,500 - \$3,000	\$750
Proof Jefferson Nickel	\$2,500 - \$4,000	\$4,000	\$6,000	\$2,000 - \$5,000	\$1,000
Proof Clad Dime	\$3,000 - \$5,000	N/A	\$6,000	\$2,500 - \$5,000	\$1,250
Proof Clad Quarter	\$4,000 - \$5,000	N/A	\$10,000	\$3,000 - \$6,000	\$1,500
Proof Clad Half	\$5,000 - \$7,000	\$4,000 - \$5,000	\$7,500	\$4,000 - \$7,500	\$2,000

# Mint Error News Price Guide

## Broadstrikes



A broadstruck error occurs when a coin is struck without the collar to form the rim and edge that is part of the shape of the coin. Coins can be broadstruck on either type one or type two planchets. When a coin is broadstruck the blank being fed into the collar will spread and distort outward as it is being struck because the collar isn't in the correct position to retain it.

Updated August 1, 2004

Denomination	(Small) XF/AU	(Small) Unc	(Large) XF/AU	(Large) Unc
Large Cent	\$150	\$300	\$400	\$1,500
Flying Eagle Cent (1857 – 1858)	\$1,000	\$2,500	\$1,500	\$5,000
Indian Cent	\$50	\$150	\$200	\$350
Lincoln Cent 1930 and Earlier	\$50	\$150	\$100	\$250
Lincoln Cent 1943 Steel	\$40	\$100	\$75	\$200
Proof Lincoln Cent	N/A	\$1,500	N/A	\$2,500
3 Cent Nickel	\$250	\$1,000	\$400	\$1,500
3 Cent Silver	\$1,000	\$3,500	\$1,500	\$5,000
Shield Nickel	\$400	\$1,250	\$1,000	\$2,500
Liberty Nickel	\$150	\$300	\$200	\$600
Buffalo Nickel	\$100	\$200	\$200	\$500
Jefferson Nickel War Time	\$100	\$200	\$200	\$500
Proof Jefferson Nickel	N/A	\$2,500	N/A	\$4,000
Seated Half Dime Legend	\$1,500	\$3,500	\$2,000	\$7,500
Seated Dime Legend	\$1,500	\$3,500	\$2,000	\$7,500
Barber Dime	\$150	\$250	\$200	\$400
Mercury Dime	\$40	\$150	\$150	\$250
Proof Clad Dime	N/A	\$3,000	N/A	\$5,000
Barber Quarter	\$600	\$1,250	\$1,000	\$2,500
Standing Liberty Quarter	\$2,000	\$4,000	\$3,000	\$6,000
Washington Quarter Silver	\$75	\$150	\$100	\$250
State Quarter	N/A	\$25	N/A	\$50
Proof Clad Quarter	N/A	\$4,000	N/A	\$5,000
Barber Half	\$2,500	\$3,500	\$3,000	\$5,000
Walking Liberty Half	\$3,000	\$5,000	\$5,000	\$10,000
Franklin Half	\$1,500	\$3,000	\$2,000	\$4,000
Kennedy Half Silver	\$150	\$250	\$200	\$300
Kennedy Half Clad	\$40	\$60	\$50	\$75
Proof Clad Half	N/A	\$5,000	N/A	\$7,000
Morgan Dollar	\$200	\$500	\$400	\$1,000
Peace Dollar	\$4,000	\$6,000	\$6,000	\$7,500
IKE Dollar	\$100	\$150	\$150	\$200
SBA Dollar	\$50	\$75	\$100	\$200
Sac Dollar	N/A	\$300	N/A	\$500

# Mint Error News Price Guide

## Partial Collars



Updated August 1, 2004

**P**artial collar strikes occur when there is a malfunction of the striking press. This causes the collar to be in an incorrect position. The lower die (usually the reverse die) is recessed in the collar. This allows the coin which is going to be struck to have a formed rim. After a coin is struck the lower die raises upwards, pushing the struck coin out of the collar and ejecting it. If a blank entering the collar is not properly seated, it will only have partial reeding as it is struck. The edge of this coin will have a partial reeding and a partial blank surface area. Recently, the Mint has installed new machinery where either die can be installed in either position.

Denomination	XF/AU	Unc
Large Cent	\$100	\$200
Flying Eagle Cent (1857 – 1858)	\$500	\$1,500
Indian Cent	\$35	\$100
Lincoln Cent 1930 and Earlier	\$30	\$100
Lincoln Cent 1943 Steel	\$25	\$50
Proof Lincoln Cent	N/A	\$750
3 Cent Nickel	\$150	\$500
3 Cent Silver	\$750	\$2,000
Shield Nickel	\$200	\$600
Liberty Nickel	\$50	\$150
Buffalo Nickel	\$100	\$150
Jefferson Nickel War Time	\$40	\$60
Proof Jefferson Nickel	N/A	\$1,000
Seated Half Dime Legend	\$750	\$1,500
Seated Dime Legend	\$500	\$1,250
Barber Dime	\$75	\$150
Mercury Dime	\$30	\$100
Proof Clad Dime	N/A	\$1,250
Barber Quarter	\$300	\$750
Standing Liberty Quarter	\$1,250	\$2,000
Washington Quarter Silver	\$40	\$75
State Quarter	N/A	\$15
Proof Clad Quarter	N/A	\$1,500
Barber Half	\$1,000	\$1,500
Walking Liberty Half	\$1,500	\$3,500
Franklin Half	\$500	\$1,000
Kennedy Half Silver	\$50	\$100
Kennedy Half Clad	\$20	\$30
Proof Clad Half	N/A	\$2,000
Morgan Dollar	\$150	\$300
Peace Dollar	\$1,000	\$2,500
IKE Dollar	\$50	\$100
SBA Dollar	\$20	\$30
Sac Dollar	N/A	\$100

# Mint Error News Price Guide

## Uniface Strikes



Updated August 1, 2004

Uniface coins occur when there have been two blank planchets in the press at the same time. The other blank will obstruct the die on either the obverse or reverse side, which will prevent it from having that design on the coin. There are many different variations involving uniface errors. In addition to having a 100% blank obverse or reverse, a coin can be struck off-center, with a blank planchet in the collar which will obstruct one side of the off-center. There are also mated pairs which have a combination of multiple errors which can include a side which is uniface. Finally, there are uniface strikes due to a die cap which adhered to the die, forming itself in the shape of a die and striking blank planchets.

Denomination	Uniface Obverse XF	Uniface Obverse Unc	Uniface Reverse XF	Uniface Reverse Unc
Large Cent	\$1,500	\$4,000	\$1,250	\$3,000
Indian Cent	\$1,250	\$3,000	\$1,000	\$2,500
Lincoln Cent 1943 Steel	\$250	\$500	\$200	\$400
Lincoln Cent Wheat Ears	\$50	\$100	\$40	\$75
3 Cent Nickel	\$1,500	\$3,000	\$1,250	\$2,500
Shield Nickel	\$1,750	\$5,000	\$1,500	\$4,000
Liberty Nickel	\$2,000	\$3,500	\$1,500	\$3,000
Buffalo Nickel	\$2,250	\$3,000	\$2,000	\$2,500
Jefferson Nickel War Time	\$300	\$750	\$250	\$500
Jefferson Nickel	\$20	\$40	\$20	\$40
Barber Dime	\$2,000	\$3,000	\$1,500	\$2,500
Mercury Dime	\$1,500	\$2,500	\$1,250	\$2,250
Roosevelt Dime Silver	\$100	\$150	\$100	\$150
Roosevelt Dime Clad	\$40	\$75	\$35	\$60
Washington Quarter Silver	\$400	\$750	\$350	\$500
Washington Quarter Clad	\$100	\$125	\$75	\$100
State Quarter	N/A	\$300	N/A	\$500
Kennedy Half Clad	\$750	\$1,000	\$500	\$750
IKE Dollar	\$2,000	\$3,000	\$1,750	\$2,500
SBA Dollar	N/A	\$1,000	N/A	\$750
Sac Dollar	N/A	\$1,500	N/A	\$1,000

# Mint Error News Price Guide

## Bonded Coins



**B**onded coins occur when the feeder system, which supplies blank planchets to the coin press, malfunctions and jams. When this occurs, a struck coin is not properly ejected and another planchet is fed into the collar and is struck. This struck coin will land on top of the previously unejected strike. These coins will then crush and bond together. This may occur many times as more coins bond.

Updated August 1, 2004

Denomination	2 Planchets	3-4 Planchets
Lincoln Cent Wheat Ears	\$2,500	–
Lincoln Cent Memorial	\$400	\$1,000
Jefferson Nickel	\$600	\$1,500
Roosevelt Dime Silver	\$1,500	–
Roosevelt Dime Clad	\$600	\$2,000
Washington Quarter Silver	\$4,000	–
Washington Quarter Clad	\$1,500	–
State Quarter	\$7,500	–
Kennedy Half Silver	\$10,000	–
Kennedy Half Clad	\$7,500	–
IKE Dollar	–	–
SBA Dollar	–	–
Sac Dollar	–	–

# Mint Error News Price Guide

## Coins Struck on Feeder Finger Tips



After a recent tour of the U.S. Mint at Philadelphia, it was discovered that the minting process had changed to some degree. One of the changes was that “feeder fingers” were used during the striking of all denominations of U.S. coins. Prior to this tour, U.S. coins that were struck on feeder finger tips were authenticated and described as being struck on aluminum scrap. Coins from all modern denominations have been discovered that were struck on the tips of these feeder fingers.

Updated August 1, 2004

Denomination	Small	Medium	Large
Lincoln Cent Memorial	\$2,500	\$3,500	\$5,000
Jefferson Nickel	\$3,000	\$4,500	\$6,000
Roosevelt Dime Clad	\$3,000	\$6,000	\$7,500
Washington Quarter Clad	\$4,000	\$6,000	\$7,500
State Quarter	\$4,500	\$6,500	\$8,500
Kennedy Half Clad	\$4,000	\$6,000	\$8,000
SBA Dollar	\$5,000	\$8,500	\$12,500
Sac Dollar	\$4,500	\$7,500	\$10,000

# Mint Error News Price Guide

## Struck Fragments



The blanking press takes the coils of metal strips and punches blanks out of it, ejecting the webbing at the other end. The webbing is cut into small scrap pieces to be melted and recycled. Occasionally a scrap piece will be mixed with the blank planchets and struck by the dies. Struck fragments are rare in the larger denominations. These can be uniface or die struck both sides and are very rare on type coins.

Updated August 1, 2004

Denomination	Uniface	Die Struck Both Sides
Indian Cent	–	\$4,000
Lincoln Cent Wheat Ears	\$450	\$1,000
Lincoln Cent Memorial	\$75	\$125
3 Cent Nickel	–	\$7,500
Jefferson Nickel	\$100	\$200
Roosevelt Dime Silver	\$300	\$750
Roosevelt Dime Clad	\$150	\$250
Washington Quarter Silver	\$750	–
Washington Quarter Clad	\$200	\$300
State Quarter	\$750	\$1,000
Kennedy Half Silver	\$1,250	\$2,000
Kennedy Half Clad	\$750	\$1,250
IKE Dollar	–	–
SBA Dollar	\$2,000	\$4,000
Sac Dollar	–	–

# Mint Error News Price Guide

## Mated Pairs



**M**ated pairs involve two individual coins with different errors that were struck together at the same time. Mated pair error combinations can be found in most error types and come in many shapes and sizes. Mated pairs can be overlapped when one of the coins is struck off-center on top of another coin. Another type involves a brockage where a struck coin was perfectly centered on a blank and restruck. Some mated pairs involve a die cap where the cap and brockage coin are discovered together, but this is a scarce find.

The rarest mated pair type involves two die caps (obverse and reverse) where both dies were capped at the same time and both die caps are mated. This last type is extremely rare and there are only a few known examples of mated pairs involving an

obverse die cap and reverse die cap. There are several of these mated pairs known on Kennedy Halves including two dated 1976, which is the Bicentennial year. One of the most spectacular mated pairs involve two Barber Dimes, an obverse die cap mated to a reverse die cap and are unique.

Mated pairs can also involve an off-metal where a smaller blank planchet or smaller struck coin was struck on top of a larger coin. This type is extremely rare. The most spectacular pair known is a double struck Franklin Half which was mated to a Lincoln Cent. The Lincoln Cent blank was on top of the obverse of the struck Franklin Half. This pair was then struck together. It is unique.

**Updated August 1, 2004**

Denomination	Overlapping	Full Brockage	Die Cap	2 Die Caps
Lincoln Cent Wheat Ears	\$1,000	\$1,500	–	–
Lincoln Cent Memorial	\$200	\$300	\$500	\$750
Liberty Nickel	–	\$20,000	–	–
Jefferson Nickel (pre War Time)	–	–	–	\$15,000
Jefferson Nickel	\$350	\$500	\$650	\$1,000
Barber Dime	–	–	–	\$50,000
Roosevelt Dime Silver	\$1,000	\$2,000	\$1,500	–
Roosevelt Dime Clad	\$500	\$750	\$1,250	\$2,000
Washington Quarter Silver	\$2,000	\$5,000	–	–
Washington Quarter Clad	\$1,000	\$2,500	–	–
State Quarter	\$3,000	\$5,000	\$7,500	–
Kennedy Half Silver	–	\$6,000	\$10,000	\$15,000
Kennedy Half Clad	\$7,500	\$8,500	\$10,000	\$12,500
IKE Dollar	–	\$7,500	\$20,000	–
SBA Dollar	\$7,500	–	–	–
Sac Dollar	–	–	–	–



# Mint Error News Price Guide

## Transitional Errors



Updated August 1, 2004

A transitional error occurs when a coin is struck on a planchet from a previous year with different metal composition. The most famous transitional is a 1943 copper cent struck on a 1942 copper blank. 1943 cents were struck in steel because of the copper shortage during World War II. Other famous transitionals include 1965 coinage struck in silver instead of clad.

There are also transitionals struck on blanks for the next year. An example is 1964 coinage in clad instead of silver. Most recently, transitionals were discovered involving the SBA and Sacagawea Dollars of 1999 and 2000. There are eight known 1999 SBA Dollars struck on the brass planchet for the 2000 Sacagawea Dollar, and four known 2000 Sacagawea Dollars struck on a clad planchet for the 1999 SBA Dollar.

Denomination	Off-Metal Planchet	Circulated	AU	Unc	Choice Unc - Gem
Lincoln Cent 1943 Transitional	Copper Cent Planchet	\$40,000 +	\$60,000 +	\$85,000 +	\$100,000 +
Lincoln Cent 1944 Transitional	Steel Cent Planchet	\$7,500	\$15,000	\$25,000	\$40,000
Lincoln Cent 1964 Transitional	Clad Dime Planchet	\$2,500	\$4,000	\$6,000	\$8,500
Lincoln Cent 1965 Transitional	Silver Dime Planchet	\$2,750	\$4,500	\$6,000	\$7,500
Roosevelt Dime 1964 Transitional	Clad Dime Planchet	\$5,000	\$6,500	\$7,500	\$8,500
Roosevelt Dime 1965 Transitional	Silver Dime Planchet	\$5,000	\$6,500	\$7,500	\$8,500
Washington Quarter 1964 Transitional	Clad Quarter Planchet	\$5,000	\$6,500	\$7,500	\$8,500
Washington Quarter 1965 Transitional	Silver Quarter Planchet	\$5,000	\$6,500	\$7,500	\$8,500
Kennedy Half 1964 Transitional	Clad Half Planchet	\$5,000	\$6,000	\$7,000	\$9,000
Kennedy Half 1965 Transitional	Silver Half Planchet	\$5,000	\$6,500	\$7,500	\$10,000
Kennedy Half 1964 Transitional	Clad Quarter Planchet	\$5,000	\$6,000	\$7,500	\$8,500
Kennedy Half 1965 Transitional	Silver Quarter Planchet	\$6,000	\$7,500	\$8,000	\$9,000
Ike Dollar Transitional	40% Silver Planchet	\$2,750	\$3,000	\$3,500	\$4,000
SBA Dollar Transitional	Sacagawea Planchet	N/A	N/A	\$12,500	\$15,000
Sacagawea Dollar Transitional	SBA Planchet	N/A	N/A	\$12,500	\$15,000

# Mint Error News Price Guide

## U.S. Gold Errors



Major mint errors on U.S. Gold coins are the most prized category of all mint errors. Gold errors are very rare and a few have traded in the \$75,000 to \$100,000 range. Even a broadstruck U.S. Gold coin can easily sell for \$15,000 to \$30,000 compared to a broadstruck Cent, Nickel, Dime or Quarter which all sell for well under \$10. Many serious collectors of Gold Errors have to wait patiently for months and sometimes even years to acquire that one special piece for their collection.

The prices listed here are for common dates in AU-Unc. Better dates and errors that are in gem condition are worth considerably more.

Updated August 1, 2004

Denomination	Partial Collar	Broadstruck	Clipped Planchet	3% - 5% Off-Center	10% - 15% Off-Center
\$1 Gold Type 1	\$5,000	\$10,000	\$5,000	\$12,500	\$20,000
\$1 Gold Type 2	\$6,000	—	\$12,500	—	—
\$1 Gold Type 3	\$4,000	\$12,500	\$5,000	\$12,500	\$20,000
\$2½ Liberty	\$5,000	\$7,500	\$4,000	\$10,000	\$15,000
\$2½ Indian	—	—	\$4,000	\$7,500	\$12,500
\$3 Indian	\$7,500	\$20,000	\$7,500	—	—
\$5 Liberty	\$6,000	\$12,500	\$6,000	\$15,000	\$25,000
\$5 Indian	—	—	\$6,000	\$15,000	\$30,000
\$10 Liberty	\$10,000	\$20,000	\$7,500	\$25,000	\$40,000
\$10 Indian	—	—	\$7,500	\$25,000	\$40,000
\$20 Liberty	\$10,000	\$25,000	\$10,000	\$30,000	\$150,000
\$20 St. Gaudens	—	—	\$6,000	—	—
\$5 American Eagle	\$1,000	\$2,000	\$750	\$2,500	\$3,500
\$10 American Eagle	\$1,250	\$2,500	\$1,000	\$3,000	\$3,500
\$25 American Eagle	\$1,500	\$3,000	\$1,500	\$3,500	\$5,000
\$50 American Eagle	\$2,000	\$4,000	\$2,000	\$5,000	\$7,500

# Mint Error News Price Guide

## Indents



An indent error occurs when two blanks are fed inadvertently into the same collar, with one blank partly overlaying on top of the other. When the hammer die strikes this combination, the upper blank will be forced into the lower blank, creating a depression which is shaped similar to the upper blank. A scarce type of indent occurs when a blank intended for one denomination lands on top of a blank from a different denomination.

Updated August 1, 2004

Denomination	10% - 25% XF	30% - 50% XF	10% - 25% Unc	30% - 50% Unc
Large Cent	\$300	—	—	—
Indian Cent	\$250	\$500	\$400	\$650
Lincoln Cent 1943 Steel	\$100	\$300	\$175	\$500
Lincoln Cent Wheat Ears	\$30	\$75	\$75	\$125
3 Cent Nickel	\$500	\$1,250	\$1,500	\$3,000
Shield Nickel	\$1,000	\$1,500	\$2,000	\$3,000
Liberty Nickel	\$400	\$1,000	\$750	\$1,500
Buffalo Nickel	\$300	\$1,000	—	—
Jefferson Nickel War Time	\$200	\$400	\$400	\$750
Jefferson Nickel	\$10	\$25	\$15	\$30
Barber Dime	\$1,000	\$2,000	\$1,500	\$3,000
Mercury Dime	\$300	\$750	\$500	\$1,500
Roosevelt Dime Silver	\$30	\$60	\$50	\$100
Roosevelt Dime Clad	\$10	\$20	\$15	\$30
Washington Quarter Silver	\$100	\$200	\$150	\$300
Washington Quarter Clad	\$25	\$50	\$35	\$100
State Quarter	N/A	N/A	\$200	\$350
Kennedy Half Clad	\$150	\$300	\$200	\$400
IKE Dollar	\$350	\$1,000	\$500	\$2,000
SBA Dollar	N/A	N/A	\$250	\$500
Sac Dollar	N/A	N/A	\$400	\$750

# Mint Error News Price Guide

## Die Caps



Updated August 1, 2004

A capped die is caused when a struck coin sticks to the upper hammer die. Once the coin is struck to the die face, the reverse of the struck coin becomes the new die face. When the next blank is fed into the collar and the strike occurs, the reverse design of the adhered struck coin impresses itself into the new blank. This struck coin is a brockage strike. The coin that adhered to the upper die is known as a die cap. This process repeats itself as more coins are struck by the cap. The greater the number of strikes, the higher the cap metal will be pushed around the upper die shaft. Eventually, the cap brakes away from the die in the shape of a thimble.

Denomination	Obverse Cap XF	Obverse Cap Unc	Reverse Cap XF	Reverse Cap Unc
Large Cent	\$20,000	\$40,000	—	—
Indian Cent 1859	\$12,500	\$30,000	—	—
Indian Cent 1860-1864	\$10,000	\$25,000	—	—
Indian Cent 1864-1909	\$9,000	\$20,000	\$5,000	\$10,000
Lincoln Cent 1943 Steel	—	—	—	—
Lincoln Cent Wheat Ears	\$1,000	\$1,500	\$500	\$750
Lincoln Cent Memorial	\$150	\$200	\$50	\$100
2 Cent Piece	\$15,000	\$30,000	\$10,000	\$20,000
3 Cent Nickel	—	—	—	—
Shield Nickel	—	—	—	—
Liberty Nickel	\$12,500	\$20,000	—	—
Buffalo Nickel (1 Known)	—	\$30,000	—	—
Jefferson Nickel War Time	\$10,000	—	—	—
Jefferson Nickel	\$200	\$350	\$150	\$250
Barber Dime	\$15,000	\$30,000	\$7,500	\$15,000
Mercury Dime (2 Known)	\$6,500	\$15,000	—	—
Roosevelt Dime Silver	\$750	\$1,250	\$500	\$750
Roosevelt Dime Clad	\$200	\$400	\$200	\$250
Barber Quarter	\$15,000	\$30,000	—	—
Washington Quarter Silver	\$1,500	\$2,500	\$1,500	\$2,000
Washington Quarter Clad	\$350	\$500	\$250	\$350
State Quarter	N/A	\$1,000	N/A	\$600
Kennedy Half Silver	\$4,000	\$7,500	\$2,000	\$3,000
Kennedy Half Clad	\$2,000	\$3,500	\$1,500	\$2,000
Kennedy Half Bicentennial	\$2,500	\$4,000	\$1,750	\$2,500
IKE Dollar	—	\$20,000	—	—
SBA Dollar	N/A	\$20,000	N/A	\$15,000
Sac Dollar	N/A	\$20,000	N/A	\$15,000

# Mint Error News Price Guide

## Die Adjustment Strikes



**D**ie adjustment strikes are also known as die trials. This error occurs when a coin is struck from the press with very little pressure. When the press is being set up and adjusted, extremely weak strikes occur as the strike pressure reaches its optimum level. These die trials are destroyed after being struck and are rarely found in circulation.

**Updated August 1, 2004**

Denomination	XF/AU	Unc
Indian Cent	\$3,000	\$4,000
Lincoln Cent Wheat Ear	\$200	\$300
Lincoln Cent 1943 Steel	\$750	\$1,500
Lincoln Cent Memorial	\$50	\$75
2 Cent	\$5,000	—
Liberty Nickel	\$3,000	\$5,000
Buffalo Nickel	\$4,000	\$7,500
Jefferson Nickel War Time	\$1,250	\$2,000
Jefferson Nickel	\$75	\$100
Proof Jefferson Nickel	N/A	\$4,000
Barber Dime	\$4,000	\$5,000
Mercury Dime	\$3,500	\$5,000
Roosevelt Dime Silver	\$350	\$500
Roosevelt Dime Clad	\$100	\$125
Seated Quarter	\$7,500	\$10,000
Standing Liberty Quarter	\$15,000	\$20,000
Washington Quarter Silver	\$500	\$750
Washington Quarter Clad (Pre-State)	\$125	\$150
State Quarter	N/A	\$250 +
Walking Liberty Half	\$10,000	\$15,000
Kennedy Half Silver	\$500	\$750
Kennedy Half Clad	\$200	\$250
Proof Kennedy Half 40% Silver	N/A	\$5,000
Proof Kennedy Half Clad	N/A	\$4,000
Morgan Dollar	\$10,000	\$15,000
Peace Dollar	\$10,000	\$15,000
IKE Dollar	\$300	\$400
IKE Dollar Bicentennial	\$350	\$500
SBA Dollar	N/A	\$500
Sac Dollar	N/A	\$1,000

# Mint Error News Price Guide

## Double Denominations



One of the most expensive, popular, and desired types of errors are the double denominations. This error happens when a coin is struck on a previously struck coin of a smaller denomination. Examples are a cent on a struck dime, and a nickel on a struck cent. The most dramatic are those with considerable design visible from the original strike. There are a few known double denominations with different dates.

**Updated August 1, 2004**

Denomination	Struck On	Circulated	AU	Unc
Lincoln Cent Wheat Ears	Mercury Dime	\$6,000	\$10,000	\$20,000
Lincoln Cent Wheat Ears	Roosevelt Dime	\$4,000	–	–
Lincoln Cent Wheat Ears	Foreign Coin	\$2,000	\$2,500	–
Lincoln Cent Memorial	Roosevelt Dime Silver	\$3,000	\$4,500	\$6,000
Lincoln Cent Memorial	Roosevelt Dime Clad	N/A	N/A	\$500
Lincoln Cent Memorial	Foreign Coin	N/A	600	\$750
Jefferson Nickel	Lincoln Cent Wheat Ears	\$1,500	\$2,000	\$2,500
Jefferson Nickel	Lincoln Cent Memorial	\$500	\$600	\$750
Jefferson Nickel	Foreign Coin	\$1,000	\$1,250	\$1,500
Jefferson Nickel	Roosevelt Dime	\$1,000	\$1,250	\$1,500
Roosevelt Dime Silver	Foreign Coin	\$4,000	\$5,000	\$7,500
Roosevelt Dime Clad	Foreign Coin	\$3,000	\$4,000	\$5,000
Washington Quarter Silver	Lincoln Cent Wheat Ears	\$4,000	\$7,500	\$10,000
Washington Quarter Silver	Lincoln Cent Memorial	\$2,500	\$3,000	\$5,000
Washington Quarter Silver	Foreign Coin	\$2,500	\$3,000	\$5,000
Washington Quarter Silver	Jefferson Nickel	\$3,000	\$4,000	\$6,000
Washington Quarter Silver	Roosevelt Dime Silver	\$2,500	\$3,000	\$3,500
Washington Quarter Clad	Lincoln Cent Memorial	\$2,500	\$3,000	\$3,500
Washington Quarter Clad	Foreign Coin	\$2,000	\$2,500	\$3,000
Washington Quarter Clad	Jefferson Nickel	\$2,500	\$3,000	\$3,500
Washington Quarter Clad	Roosevelt Dime Clad	\$2,000	\$2,500	\$3,000
State Quarter	Jefferson Nickel	N/A	\$5,000	\$6,000
State Quarter (Extremely Rare)	Any Other Denomination	N/A	\$10,000 +	–
Kennedy Half (Extremely Rare)	Any Denomination	–	–	–
IKE Dollar (Extremely Rare)	Any Denomination	–	–	–
Sac Dollar	Maryland State Quarter	N/A	\$4,500	\$5,500

# Mint Error News Price Guide

## Brockages



A brockage error can only occur when there are two coins involved. One of the coins involved will always be a struck coin which has not ejected properly. That struck coin will find its way back between the dies and will be struck next to a blank planchet which was fed into the collar. The image of that first struck coin will be impressed into that side of the blank planchet. The result will be a second coin which has images of the first coin impressed into it. Those images will be pressed into the coin and the image will be in reverse. This incuse sunken image is known as a brockage.

**Updated August 1, 2004**

Denomination	50% Brockage XF	100% Brockage XF	50% Brockage Unc	100% Brockage Unc
Large Cent	\$600	\$1,000	\$3,000	–
Indian Cent	\$500	\$1,250	\$1,500	\$4,000
Lincoln Cent 1943 Steel	\$350	\$500	\$650	\$1,000
Lincoln Cent Wheat Ears	\$125	\$200	\$200	\$350
3 Cent Nickel	\$1,250	\$2,000	\$3,500	\$5,000
3 Cent Silver	\$2,000	\$3,000	\$4,000	\$7,500
Shield Nickel	\$1,500	\$2,500	\$3,500	–
Liberty Nickel	\$1,250	\$2,250	\$2,000	–
Buffalo Nickel	\$2,000	–	–	–
Jefferson Nickel War Time	\$250	\$750	\$750	–
Jefferson Nickel	\$50	\$75	\$50	\$150
Barber Dime	\$2,500	\$3,500	\$5,000	\$7,500
Mercury Dime	\$1,000	\$2,000	\$1,500	\$4,000
Roosevelt Dime Silver	\$100	\$200	\$150	\$250
Roosevelt Dime Clad	\$50	\$100	\$75	\$150
Washington Quarter Silver	\$200	\$500	\$500	\$1,000
Washington Quarter Clad	\$75	\$150	\$150	\$250
State Quarter	N/A	N/A	\$750	\$1,500
Kennedy Half Clad	N/A	N/A	\$650	\$1,500
IKE Dollar	\$1,500	\$2,000	\$3,000	\$5,000
SBA Dollar	N/A	N/A	\$500	\$1,500
Sac Dollar	N/A	N/A	\$1,500	–

# Mint Error News Price Guide

## Double & Multiple Strikes



When a blank planchet is struck by the dies, the normal procedure is for the feeders to eject the struck coin out of the collar and into a chute. If there is a malfunction and the struck coin isn't ejected, it may receive a second or third strike by the dies. A multiple struck coin can happen in many ways and have many combinations of errors.

Updated August 1, 2004

Denomination	XF/AU	Unc
Large Cent	\$1,000	–
Indian Cent	\$600	\$1,000
Lincoln Cent 1930 and Earlier	\$850	\$1,500
Lincoln Cent 1943 Steel	\$400	\$1,000
Proof Lincoln Cent	N/A	\$4,000
3 Cent Nickel	\$3,000	\$7,000
Liberty Nickel	\$4,000	\$10,000
Buffalo Nickel	\$6,000	\$10,000
Jefferson Nickel War Time	\$750	\$2,000
Proof Jefferson Nickel	N/A	\$6,000
Barber Dime	\$4,000	\$10,000
Mercury Dime	\$3,500	\$8,500
Proof Clad Dime	N/A	\$6,000
Standing Liberty Quarter	\$15,000	\$25,000
Washington Quarter Silver	\$200	\$350
State Quarter	N/A	\$350 – \$750
Proof Clad Quarter	N/A	\$7,500
Walking Liberty Half	\$7,500	\$15,000
Franklin Half	\$5,000	\$10,000
Kennedy Half Silver	\$1,500	\$2,500
Kennedy Half Clad	N/A	\$750
Proof Kennedy Half Clad	N/A	\$7,500
Morgan Dollar	\$12,500	\$25,000
Peace Dollar	\$15,000	\$25,000
IKE Dollar	\$2,000	\$3,000
SBA Dollar	N/A	\$1,000 – \$2,500
Sac Dollar	N/A	\$1,500 – \$3,000



# Mint Error News Price Guide

## Off-Center Strikes



Off-center coins are one of the most common and best known types of errors. This happens when a blank which is supposed to be fed into the press, lands in the collar improperly. When this occurs only part of the blank is between the upper and lower dies. When the dies strike the blank, only that part will be struck with a design.

Updated August 1, 2004

Denomination	10% - 15% XF/AU	25% - 60% XF/AU	10% - 15% Unc	25% - 60% Unc
Large Cent	\$400	\$2,500	\$1,000	\$7,500
Flying Eagle Cent (1857 - 1858)	\$2,500	\$10,000	\$5,000	\$15,000
Indian Cent	\$100	\$400	\$200	\$600
Lincoln Cent 1930 and Earlier	\$75	\$300	\$150	\$750
Lincoln Cent 1943 Steel	\$40	\$250	\$100	\$500
Proof Lincoln Cent	N/A	N/A	\$1,500	\$3,000
3 Cent Nickel	\$300	\$1,500	\$600	\$3,500
3 Cent Silver	\$1,000	\$5,000	\$2,000	\$7,500
Shield Nickel	\$750	\$2,500	\$1,000	\$7,500
Liberty Nickel	\$250	\$1,000	\$500	\$2,500
Buffalo Nickel	\$250	\$750	\$400	\$1,500
Jefferson Nickel War Time	\$100	\$500	\$200	\$1,000
Proof Jefferson Nickel	N/A	N/A	\$2,000	\$5,000
Seated Half Dime Legend	\$3,000	\$7,500	\$5,000	\$15,000
Seated Dime Legend	\$2,000	\$7,000	\$3,500	\$12,500
Barber Dime	\$300	\$1,500	\$500	\$2,500
Mercury Dime	\$100	\$750	\$150	\$1,250
Proof Clad Dime	N/A	N/A	\$2,500	\$5,000
Barber Quarter	\$1,500	\$5,000	\$2,500	\$10,000
Standing Liberty Quarter	\$5,000	-	\$15,000	-
Washington Quarter Silver	\$50	\$100	\$75	\$150
State Quarter	N/A	N/A	\$75	\$300
Proof Clad Quarter	N/A	N/A	\$3,000	\$6,000
Barber Half	\$3,000	\$8,500	\$5,000	-
Walking Liberty Half	\$4,000	\$12,500	\$7,500	-
Franklin Half	\$2,500	\$4,000	\$3,500	\$6,000
Kennedy Half Silver	\$100	\$500	\$250	\$1,000
Kennedy Half Clad	\$60	\$250	\$100	\$400
Proof Clad Half	N/A	N/A	\$4,000	\$7,500
Morgan Dollar	\$3,000	\$13,500	\$7,500	\$20,000
Peace Dollar	\$7,500	\$15,000	\$8,500	\$30,000
IKE Dollar	\$125	\$1,250	\$150	\$2,000
SBA Dollar	N/A	N/A	\$100	\$500
Sac Dollar	N/A	N/A	\$1,000	\$3,500

# Mint Error News Price Guide



Updated August 1, 2004

## Off-Metals

Off-metal and wrong planchet errors occur when a correctly made blank from one denomination is accidentally fed into a press for another denomination. Examples are a nickel struck on a cent planchet and a cent struck on a dime planchet. The coin struck on an incorrect blank will weigh exactly what the denomination of that blank would have been. An even more dramatic wrong planchet error is a coin struck on a previously struck coin of a different metal.

Denomination	Off-Metal Planchet	Circulated	AU	Unc	Choice Unc – Gem
Indian Cent	Foreign Planchet	\$1,000	\$1,500	\$5,000	\$7,500
Indian Cent	Dime Planchet	\$7,500	\$12,500	\$20,000	\$30,000
Lincoln Cent Before 1919	Dime Planchet	\$4,000	\$6,500	\$10,000	–
Lincoln Cent Before 1919	Foreign Planchet	\$1,500	\$3,000	\$6,000	–
Lincoln Cent 1919 – 1940	Dime Planchet	\$2,000	\$2,500	\$4,000	\$6,000
Lincoln Cent 1919 – 1940	Foreign Planchet	\$750	\$1,250	\$2,000	\$2,500
Lincoln Cent 1943 Steel	Dime Planchet	\$1,500	\$2,500	\$3,500	\$4,500
Lincoln Cent 1943 Transitional	Copper Cent Planchet	\$40,000 +	\$60,000 +	\$85,000 +	\$100,000 +
Lincoln Cent 1944 Transitional	Steel Cent Planchet	\$7,500	\$12,500	\$25,000	\$40,000
Lincoln Cent Wheat Ears (1941-1964)	Dime Planchet	\$500	\$600	\$1,000	\$1,500
Lincoln Cent 1965 and Later	Dime Planchet	\$125	\$150	\$200	\$350
Lincoln Cent 1964 Transitional	Clad Dime Planchet	\$2,500	\$4,000	\$6,000	\$7,500
Lincoln Cent 1965 Transitional	Silver Dime Planchet	\$2,750	\$4,500	\$6,000	\$7,500
Shield Nickel	Foreign Planchet	\$7,500	\$12,500	–	–
Shield Nickel	Cent Planchet	\$6,000	\$12,500	\$15,000	–
Liberty Nickel	Foreign Planchet	\$400	\$750	\$1,250	\$2,000
Liberty Nickel	Cent Planchet	\$2,000	\$3,000	\$6,000	\$7,500
Buffalo Nickel	Foreign Planchet	\$2,500	\$6,000	\$10,000	–
Buffalo Nickel	Cent Planchet	\$2,000	\$4,000	\$6,000	\$8,000
Jefferson Nickel Before 1950	Cent Planchet	\$250	\$500	\$750	\$1,000
Jefferson Nickel 1950 and Later	Cent Planchet	\$125	\$150	\$200	\$250
Jefferson Nickel 1943	Steel Cent Planchet	\$1,000	\$2,000	\$3,000	\$5,000
Jefferson Nickel 1964 and Earlier	Silver Dime Planchet	\$200	\$300	\$350	\$400
Jefferson Nickel 1965 and Later	Clad Dime Planchet	\$150	\$200	\$225	\$250
Roosevelt Dime Silver	Foreign Planchet	\$2,000	\$2,500	\$3,000	\$3,500
Roosevelt Dime Clad	Foreign Planchet	\$1,500	\$2,000	\$2,250	\$2,500
Roosevelt Dime 1964 Transitional	Clad Dime Planchet	\$5,000	\$6,500	\$7,500	\$8,500
Roosevelt Dime 1965 Transitional	Silver Dime Planchet	\$5,000	\$6,500	\$7,500	\$8,500
Washington Quarter Silver	Cent Planchet	\$300	\$400	\$500	\$750
Washington Quarter Silver	Nickel Planchet	\$300	\$400	\$500	\$600
Washington Quarter Clad	Cent Planchet	\$250	\$300	\$400	\$500
Washington Quarter Clad	Nickel Planchet	\$100	\$150	\$200	\$250
Washington Quarter	Silver Dime Planchet	\$300	\$400	\$500	\$650
Washington Quarter	Clad Dime Planchet	\$250	\$300	\$350	\$400
Washington Quarter 1964 Transitional	Clad Quarter Planchet	\$5,000	\$6,500	\$7,500	\$8,500
Washington Quarter 1965 Transitional	Silver Quarter Planchet	\$5,000	\$6,500	\$7,500	\$8,500
State Quarter	Cent Planchet	N/A	\$6,500	\$7,500	\$8,000
Delaware State Quarter	Nickel Planchet	N/A	\$500	\$650	\$750
All Other State Quarters	Nickel Planchet	N/A	\$1,000	\$1,250	\$1,500
State Quarter	Dime Planchet	N/A	\$5,000	\$5,500	\$6,000
Walking Half	Quarter Planchet	\$15,000	\$20,000	\$35,000	\$50,000
Walking Half	Foreign Planchet	\$10,000	\$15,000	\$25,000	\$35,000
Franklin Half	Cent Planchet	\$3,000	\$4,000	\$5,000	\$8,500
Franklin Half	Nickel Planchet	\$3,000	\$4,000	\$5,000	\$8,500
Franklin Half	Dime Planchet	\$3,500	\$4,500	\$5,500	\$8,500
Franklin Half	Quarter Planchet	\$600	\$750	\$1,000	\$1,250
Kennedy Half Silver 1964	Cent Planchet	\$1,000	\$1,250	\$1,500	\$2,000
Kennedy Half Silver 1964	Nickel Planchet	\$1,000	\$1,250	\$1,500	\$2,000
Kennedy Half Silver 1964	Dime Planchet	\$1,000	\$1,250	\$2,000	\$2,500
Kennedy Half Silver 1964	Quarter Planchet	\$400	\$500	\$600	\$750
Kennedy Half Clad	Cent Planchet	\$750	\$850	\$1,000	\$1,500
Kennedy Half Clad	Nickel Planchet	\$750	\$850	\$1,000	\$1,250
Kennedy Half Clad	Dime Planchet	\$750	\$850	\$1,000	\$1,400
Kennedy Half Clad	Quarter Planchet	\$350	\$400	\$450	\$500
Kennedy Half 1964 Transitional	Clad Half Planchet	\$5,000	\$6,000	\$7,000	\$9,000
Kennedy Half 1965 Transitional	Silver Half Planchet	\$5,000	\$6,500	\$7,500	\$10,000
Kennedy Half 1964 Transitional	Clad Quarter Planchet	\$5,000	\$6,000	\$10,000	\$15,000
Kennedy Half 1965 Transitional	Silver Quarter Planchet	\$6,000	\$7,500	\$10,000	\$15,000
Ike Dollar	Cent Planchet	\$5,000	\$7,500	\$10,000	\$15,000
Ike Dollar	Nickel Planchet	\$5,000	\$7,500	\$10,000	\$15,000
Ike Dollar	Dime Planchet	\$5,000	\$7,500	\$10,000	\$15,000
Ike Dollar	Quarter Planchet	\$2,750	\$3,000	\$4,000	\$4,500
Ike Dollar	Half Planchet	\$1,600	\$1,750	\$2,000	\$2,500
Ike Dollar	Foreign Planchet	\$900	\$1,000	\$1,250	\$1,500
Ike Dollar Transitional	40% Silver Planchet	\$2,750	\$3,000	\$3,500	\$4,000
SBA Dollar	Cent Planchet	N/A	\$1,750	\$2,250	\$3,000
SBA Dollar	Nickel Planchet	N/A	\$6,000	\$7,000	\$8,000
SBA Dollar	Dime Planchet	N/A	\$6,000	\$7,000	\$8,000
SBA Dollar	Quarter Planchet	N/A	\$600	\$850	\$1,000
Sac Dollar	Cent Planchet	N/A	\$8,000	\$9,000	\$10,000
Sac Dollar	Nickel Planchet	N/A	\$7,500	\$8,000	\$9,000
Sac Dollar	Dime Planchet	N/A	\$8,000	\$9,000	\$10,000
Sac Dollar	Quarter Planchet	N/A	\$1,500	\$2,000	\$2,500

# MINTERRORNEWS™

## Exclusive Discounts

Good for purchases on-line, eBay and at coin shows!

alscoins.com



**\$10 off a purchase of a mint error valued at \$100 or more from Al's Coins.**

Offer valid on purchases made from alscoins.com, eBay and at coin shows. This offer is good for any purchase made in the year 2004. One coupon per purchase. This coupon can not be used in conjunction with any other offer.

errorcointrader.com



**\$20 off a purchase of a mint error valued at \$200 or more from Error Coin Trader.**

Offer valid on purchases made from errorcointrader.com, eBay and at coin shows. This offer is good for any purchase made in the year 2004. One coupon per purchase. This coupon can not be used in conjunction with any other offer.

mikebyers.com



**\$250 off a purchase of a mint error valued at \$2,500 or more from Mike Byers.**

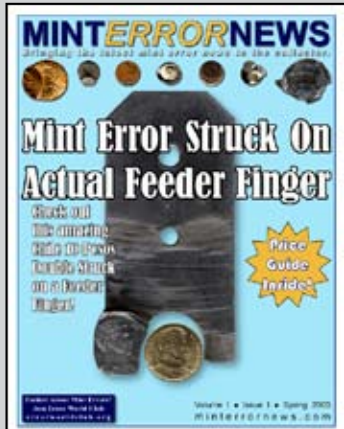
Offer valid on purchases made from mikebyers.com, eBay and at coin shows. This offer is good for any purchase made in the year 2004. One coupon per purchase. This coupon can not be used in conjunction with any other offer.

# MINT **ERROR** NEWS MAGAZINE

Bringing the latest mint error news to the collector.

Issues of Mint Error News Magazine are available for you to read online at:  
**[minterrornews.com](http://minterrornews.com)**

Mike Byers is the Publisher and Editor of Mint Error News Magazine



# (1943) Denver Quarter Struck on U.S. Steel Cent Planchet

There are only a few known Washington Quarters struck on U.S. Steel Cent Planchets. This is the only one that I'm aware of from the Denver Mint.

NCS conserved this coin and described it as corroded. It now has a bright shiny reprocessed look and has all of the details of an uncirculated coin. Extremely rare and missing from almost every major mint error collection.



# Two Dramatic Indian Cent Errors

*Photos courtesy of xanno.com*

Most mint errors that are double struck are found with the second strike off-center. In-collar double strikes are scarce and so are flipover double strikes. This Indian Head Cent mint error is unusual since it is both a flipover and double struck in the collar.



This 1901 Indian Cent is a flipover double strike. It is very dramatic since much of the detail from the second strike is visible on both sides. Flipover errors are highly collectible since you are viewing both designs on the same side of the coin.



# CoinFacts.com

Your Online Reference For U.S. Coins



**“The Ultimate Coin Book” by CoinFacts.com, Inc.  
Now Available on CD-Rom**

Our new CD-Rom is a mirror image of the CoinFacts website but with no download delays caused by slow Internet connections. In fact, no Internet connection is required at all, making the CoinFacts CD-Rom perfect for use in your home, office or even your portable computer at coin shows. Plop the CoinFacts CD-Rom in your PC and have immediate, lightning-fast access to the thousands of full color images and indispensable numismatic information. Please visit [CoinFacts.com](http://CoinFacts.com) for more information and to purchase.

Visit [www.HeritageCoin.com](http://www.HeritageCoin.com) for your  
**ERROR COIN RESEARCH**  
**FREE MEMBERSHIP!**



Visit the [HeritageCoin.com](http://HeritageCoin.com)  
 website today  
 Easy to join  
 Free membership  
 Significant research tools  
 Easy to bid  
 Easy to buy  
 Winner of the  
 NLG's Best Commercial  
 Website Award!

These are only a sample of the thousands of error coins Heritage has handled. Consign your error coins today to the next Heritage Sale.

Look up these error coins in our Permanent Auction Archives for descriptions and full-color, enlargeable images:

- A. 2003 ANA National Money Show, lot 6963  
 1919 Quarter  
 Struck 50% Off Center  
 XF45 PCGS  
**REALIZED \$15,525**
- B. 2002 September Long Beach Sale, lot 9648  
 1999 SBA Dollar  
 Multiple Strike, Reeded Edge  
 MS65 PCGS  
**REALIZED \$6,900**
- C. 2002 New York Sale, lot 7290  
 1999 Cent  
 Die Cap With Second Coin Bonded  
 MS64 Red Uncertified  
**REALIZED \$920**
- D. 2002 February Long Beach Sale, lot 7300  
 Undated Struck Through  
 Capped Die Indian Cent  
 MS64 Brown PCGS  
**REALIZED \$1,265**
- E. 2002 FUN Sale, lot 9040  
 1963 Half Dollar  
 Split Planchet  
 AU58 Uncertified  
**REALIZED \$1,610**
- F. 2001 ANA Sale, lot 8658  
 1963 Half Dollar  
 Double Struck, Indented by a Cent Planchet  
 MS66 PCGS  
**REALIZED \$20,125**
- G. 2001 ANA Sale, lot 8651  
 1999-P Dime  
 Bonded Strike, Struck More Than 10 Times  
 MS64 Uncertified  
**REALIZED \$2,300**
- H. 2001 ANA Sale, lot 8657  
 1999 Mated Pair of Georgia Statehood Quarters  
 Partial Collar, Indent and Stretch Strike, Indent  
 MS64 Uncertified  
**REALIZED \$2,415**
- I. 2001 February Long Beach Sale, lot 7497  
 1912 Quarter Eagle  
 Struck 5% Off Center  
 MS64 NGC  
**REALIZED \$4,370**

America's #1 Numismatic Auctioneer  
**HERITAGE**  
 Numismatic Auctions, Inc.

 Steve Ivy  
 Jim Halberin  
 Greg Rohan  
 P.N.G.

Heritage Plaza, 100 Highland Park Village, 2nd Floor • Dallas, Texas 75205-2788  
 1-800-US COINS (800-872-6467) • 214-528-3500 • FAX: 214-443-8425  
[www.HeritageCoin.com](http://www.HeritageCoin.com) • e-mail: [Bids@HeritageCoin.com](mailto:Bids@HeritageCoin.com)  
[www.CurrencyAuction.com](http://www.CurrencyAuction.com) • e-mail: [Notes@CurrencyAuction.com](mailto:Notes@CurrencyAuction.com)



# 1874 \$1 U.S. Gold Type 3 Broadstruck



This is the only known broadstruck Type 3 \$1 Gold Piece. It is difficult to view this broadstruck gold piece since it is certified. The holder makes it difficult to see the expanded planchet and the plain edge, since it was struck out of the collar.



# 1909 Indian Head Cent Struck on Silver Dime Blank

This is a spectacular Indian Head Cent struck on a silver Dime blank intended for a Barber Dime. It is fully struck, has original mint luster and is a very dramatic off-metal on an early U.S. type coin. This is part of Fred Weinberg's personal mint error collection.





# 1873 Shield Nickel Struck on Cent Planchet

All major mint errors in the Shield Nickel series are very rare. This 1873 Shield Nickel was struck on a copper Cent blank intended for an Indian Cent. It is in choice mint state condition and is from the Farouk Collection. This is part of Fred Weinberg's personal mint error collection.



# 1964 Kennedy Half Dollar

## Struck on Clad Quarter Planchet

This 1964 Kennedy Half is a rare TRANSITIONAL off-metal with only a few known. Instead of being struck on a 90% silver Half Dollar blank, it was struck on a U.S. clad Quarter blank intended for coinage struck in 1965.



# 1983-P Jefferson Nickel Struck on CU Cent Planchet

by Allan Levy (alscoins.com)

This extremely rare 1983 Jefferson Nickel TRANSITIONAL was struck on an all copper Cent planchet weighing 3.1 grams instead of the new copper plated zinc Cent planchets weighing 2.5 grams. The composition of U.S. Lincoln Cents was changed in 1982.

This rare transitional has a full date and is in Gem condition with blazing red color.



# Harry E. Jones

## Rare Coins & Currency

Sell Harry Your Mistakes!!

Leading Dealer in Error Currency For Over 30 Years. Buying and Selling the Finest in Error Currency. Especially Want Errors on National Currency. Also Buying Uncut Sheets of Nationals Large and Small.

7379 Pearl Rd.  
Cleveland, OH 44130

440-234-3330

LM ANA PNG PCDA



# COINLINK™

## Numismatic News & Rare Coin Web Site Directory

# coinlink.com

# 2000-P “Mule” Sacagawea Dollar Reverse With States Quarter Obverse

by Fred Weinberg (fredweinberg.com)



There are now ten (10) confirmed specimens of the Sacagawea Dollar/Quarter Mule. The ten confirmed specimens are:

Mule #1. The “Discovery” specimen, found in Mountain Home, Arkansas by Frank Wallis. Originally sold by Bowers & Merena Auction Galleries at the 2000 ANA Philadelphia Millennium Sale for \$29,900. Purchased from Dwight Manley by Fred Weinberg in late June 2001 and then sold to Tommy Bolack for \$67,000.

PCGS MS-66 (Die Pair #1)

Mule #2. The “eBay” specimen, sold by Delaware Valley Rare Coin Co., in Bromall Pennsylvania for \$41,395 in July 2000. Purchased at the Heritage Numismatic Auctions Signature Sale held June 1, 2001 at the Long Beach Coin Expo for a then record price of \$56,350, by Tommy Bolack.

NGC MS-67 (Die Pair #2)

Mule #3. The “Heritage Auction” specimen, sold in the Heritage Numismatic Auction Pre-ANA Sale August 6, 2000 for \$31,050. Then into a private collection, after being purchased off an eBay Auction in October 2000. Currently owned by Tommy Bolack.

NGC MS-66 (Die Pair #2)



Mule #4. The “Margolis” specimen, originally from Fred Weinberg of Encino, CA. Sold by Arnold Margolis to a private collector in September 2000 for \$47,500.  
PCGS MS-65 (Die Pair #1)

Mule #5. The “Greg Senske” specimen, found in Cape Girardeau, Missouri. This coin was discovered Sept. 2000 in change from a cashier at a cafeteria, and was in a 25-coin roll of Sacagawea \$1, wrapped in a U.S. Mint designated paper wrapper. This piece is not on the market at this time.  
NGC MS-67 (Die Pair #3)

Mule #6. The “Fred Weinberg” specimen, discovered on the East Coast in June 2000 and sold by Fred Weinberg at the Long Beach Coin Expo October 5, 2000 for \$50,000 to an anonymous collector. Purchased in May 2003 for \$75,000 by Tommy Bolack.  
PCGS MS-66 (Die Pair #1)

Mule #7. The “Philadelphia” specimen, purchased by Tommy Bolack from Maryland Coin Exchange in early February 2001 for \$48,000. MCE purchased this piece from the man who discovered it in a roll of dollars in July 2000 in Pennsylvania.  
NGC MS-64 (Die Pair #2)

Mule #8. The “Tommy Bolack-1” specimen, purchased in June 2001. The purchase price was not disclosed.  
PCGS MS-66 (Die Pair #1)

Mule #9. The “Tommy Bolack-2” specimen purchased in July 2001. The purchase price was not disclosed.  
PCGS MS-65 (Die Pair #1)

Mule #10. The “Treasury” specimen, first reported in August 2001 by a convenience store owner who received it in payment in his downtown Philadelphia store in summer 2000. It was taken by Treasury Dept. officials in August 2001 to verify authenticity and to examine the piece at the Philadelphia Mint. It was returned by the Treasury Department in October 2001 and subsequently purchased by Fred Weinberg, who sold it in November 2001 to Tommy Bolack for \$70,000.  
NGC MS-65 (Die Pair #3)

# Double Struck

## 1797 Drape Bust Large Cent

**D**rape Bust Large Cents are rare in MS 65. The fact that this specimen is also double struck makes this 200 year old major mint error the highlight of a Large Cent, Type Set or Mint Error Collection.

Detail from both strikes are clearly visible on the obverse and reverse since there was a significant shift between strikes.



**eureka trading systems**



**eurekatrading.com**

## **The Software Clinic**

Specializing in numismatic  
website creation.



**Ray Gaudette**



**surok@adelphia.net**

## **Rich Schemmer**

specializing in rare error coins for the collector

**richerrors.com**

**Richerrors@aol.com**



# **SUBMIT YOUR ARTICLE TO MINT ERROR NEWS MAGAZINE**

**Please make sure you have copyrights to any content that you submit. Your article may be subject to revision. If you include images with your article, please use a minimum resolution of 300 DPI.**

**Please submit all content to:**

**editor@minterrornews.com**

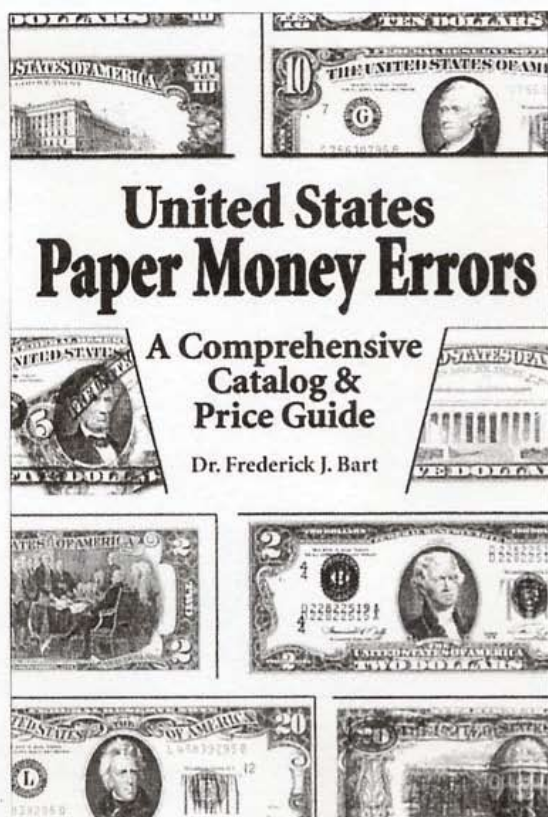
The LONG AWAITED SECOND EDITION of

# United States Paper Money Errors: A Comprehensive Catalog & Price Guide

by **FREDERICK J. BART**

foreword by **HARRY E. JONES**

Will be **READY to SHIP** in a **COUPLE** of **WEEKS ...RESERVE YOUR COPY** now  
published by **KRAUSE PUBLICATIONS**  
available from Krause Publications, their distributors, your supplier, or directly from the author



- **COMPREHENSIVE INFORMATION on US PAPER MONEY ERRORS** ranging from **DOUBLE DENOMINATIONS** to **INK SMEARS**
- **COMPLETELY RE-WRITTEN**
- **UP-to-DATE PRICE GUIDE** in **THREE GRADES**
- **550 PHOTOGRAPHS** (b & w) of **SMALL SIZE & LARGE SIZE ERRORS**
- **256 PAGES**, 6" x 9", softbound
- **HISTORICAL PHOTOGRAPHS**
- **BEHIND-the-SCENES** peeks at "INSIGHTS and INCIDENTS"
- **SUITED for both the ADVANCED COLLECTOR and the BEGINNER**
- **DATA for the RESEARCHER, CATALOGUER, and DEALER**

-----ORDER FORM-----

I wish to reserve--and am enclosing payment for--one copy of *United States Paper Money Errors* at \$24.95. My check will not be cashed until the book is ready to ship. I would like the book:

- autographed by the author  
 inscribed, as indicated below, and autographed

\_\_\_\_\_  
 \_\_\_\_\_  
 \_\_\_\_\_

Please mail the book to:

\_\_\_\_\_  
 \_\_\_\_\_  
 \_\_\_\_\_  
 \_\_\_\_\_

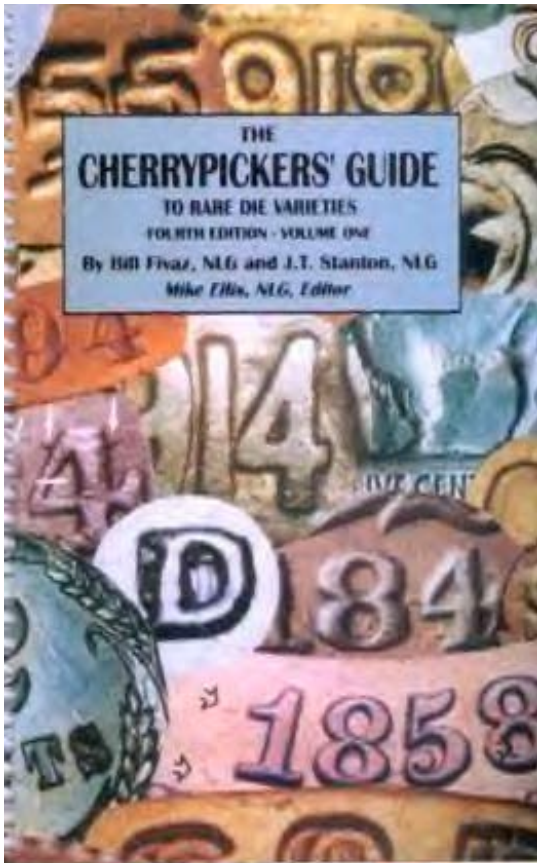
**Order your copy today!**

# *The Cherrypickers' Guide* *To Rare Die Varieties* Volume Two, Fourth Edition

The Second Volume of the Fourth Edition of *The Cherrypickers' Guide* is just around the corner. We are now accepting prepublication orders at a 20% discount off the retail price. To place your order, please visit [www.cherrypickersguide.com](http://www.cherrypickersguide.com). Or send an e-mail to [jtstanton@aol.com](mailto:jtstanton@aol.com) for instructions, or write to J. T. Stanton, P. O. Box 15487, Savannah, GA 31416-2187.

There are three versions being offered for this volume. The standard 5.5" x 8.5" page size coil bound, the most popular version. A hard bound version with a 5.5" x 8.5" page size (available approx. November, 2003). There will also be a new, large format version available. The copy will be the same as for the 5.5" x 8.5", but will be printed on an 8.5" x 11" page. Again coil bound, this version will allow about 1.5" space on all 4 sides of the copy for notes, plus will include extra note pages within the book. Those who like to keep detailed notes of their collection and of new varieties will find this version the most accommodating.

Only orders placed with J. T. Stanton either by mail, fax or via the web site will be autographed and numbered. If you have a copy of Volume One which is numbered, please note your Volume One book number and your Volume Two will also have the same book number. Payment by check, money order or PayPal only.



5.5" x 8.5" Coil bound \$39.95

5.5" x 8.5" Hard bound \$69.95

8.5" x 11" Large format, spiral bound \$64.95

P & H is \$3.50 for the first copy, and \$1.50 for each additional copy.  
Mailing will be via Media Mail.

For mail orders, send check or money order to:  
(PayPal account is [jtstanton@aol.com](mailto:jtstanton@aol.com))

J. T. Stanton  
P. O. Box 15487  
Savannah, GA 31416-2187

Phone: 912-355-1976  
Fax: 912-355-3399

E-mail: [jtstanton@aol.com](mailto:jtstanton@aol.com)

Website: [www.cherrypickersguide.com](http://www.cherrypickersguide.com)

# Fred Weinberg & Co.

Dealer in Major Mint Error Coins & Currency



[fredweinberg.com](http://fredweinberg.com)



## BUYING MAJOR ERROR COINS & CURRENCY

If you have a single major mint error coin, either a recent issue or an older type coin, or 1,000 Off-Center Cents, please contact us. We stock over 60,000 Major Mint Error Coins and constantly need to purchase Major Error Coins for our clientele (please note that we do not deal in or buy Die Varieties, Damaged Coins, Doubled Dies, Filled Dies, or Die Cracks).

We do buy Major Mint Errors - such as Off-Center, Off-Metals, Double Strikes, Clad Layers missing, Die Caps, Double Denomination, etc.

Because of the many differences in each Error Coin we request that you send scans of your coin(s) to us for our examination and firm offer.

Postal Correspondence:

Telephone/Fax:

16311 Ventura Blvd.

Phone: (818) 986-3733

Suite #1298

Toll-free: (800) 338-6533

Encino, California 91436

Fax: (818) 986-2153

e-mail: [fred@fredweinberg.com](mailto:fred@fredweinberg.com)

# fredweinberg.com

# Robert L. Astrich

P.O. Box 981

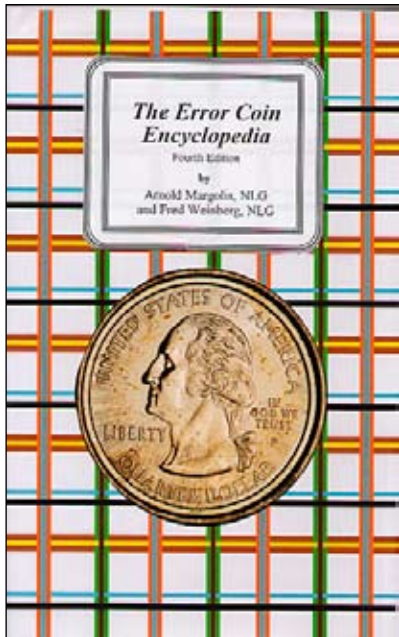
Hempstead, TX 77445

Office: (979) 826-2221 Fax: (979)826-6566

I BUY AND SELL MAJOR ERROR COINS, ALL U.S. COINS & EARLY FOREIGN CROWNS & GOLD, HIGH GRADE CERTIFIED MORGAN & PEACE DOLLARS, U.S. DATED GOLD & HI RELIEFS, EARLY 1936-42 PROOF SETS CERTIFIED & RAW.

I AM A STRONG BUYER OF ORIGINAL EARLY MINT SETS 1947-58, AND PAY STRONG PRICES FOR ORIGINAL ROLLS OF CENTS THRU HALF DOLLARS 1954 & EARLIER. I ALSO BUY ORIGINAL BU DOLLAR ROLLS. I AM A FULL TIME USER OF THE CERTIFIED COIN EXCHANGE AND THE COIN NET SYSTEMS. I AM AN ACTIVE BUYER OF LARGE COIN COLLECTIONS.

ALL TRANSACTIONS WILL REMAIN CONFIDENTIAL.



Entirely rewritten edition. 495 pages.  
Hard Cover 4th Edition: \$39.95 postpaid

Available from:

**Arnie Margolis  
&  
Fred Weinberg**

# Silver Towne L.P.

50 years of quality Tradition: Make new friends  
but keep the old - one is silver the other is gold.

[silvertowne.com](http://silvertowne.com)

100 GREATEST  
U.S. COINS



New Book - 100 Greatest U.S. Coins  
by Jeff Garrett and Ron Guth

Order your copy today!

[CoinFacts.com](http://CoinFacts.com)

# Independent Coin Grading Company

## A Company Formed By Some Of The Industry's Top Graders.



KEITH LOVE, FOUNDER AND CEO

Only ICG offers you all this:

ICG's "No-grade, No-Fee" policy. We charge a \$5 processing fee if we "no grade" a coin.

Intercept Shield, Ultimate protection for your collectibles.

\$1 credit for returning our insert tags, (pre 1950 coins) and a 50¢ credit for all 1950 or later coins.

Quick turnaround times to preserve cash flows.

Sonically sealed, tamper-evident, attractive holder with our SECUREGRAM™ hologram system.

And, most important ... expert, consistent grading by the most respected names in the business.

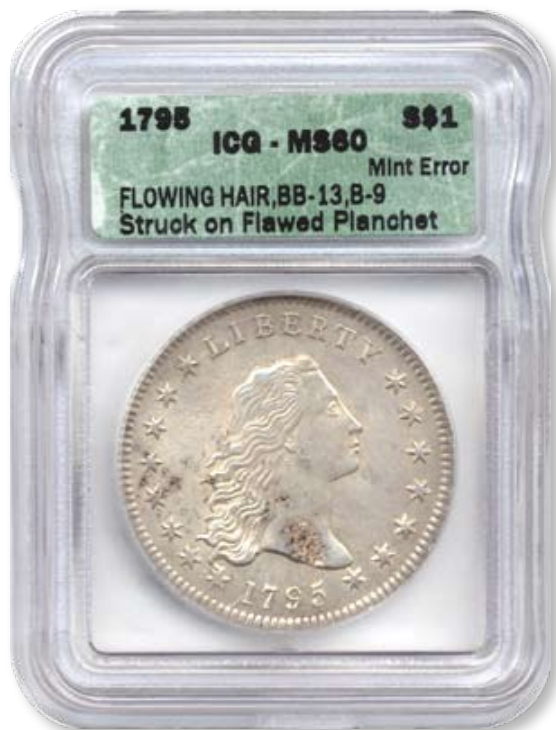


Photo courtesy of mikebyers.com

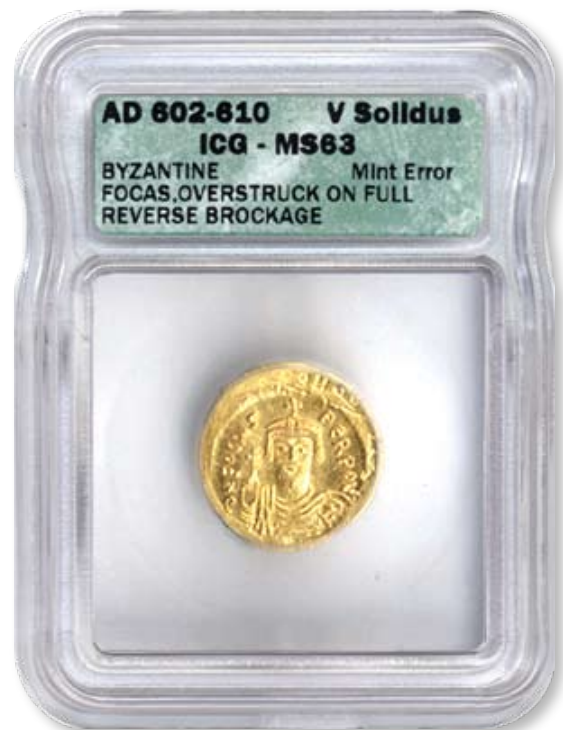


Photo courtesy of mikebyers.com

### ICG

7901 East Belleview Ave., Suite 50  
Englewood, CO 80111  
877-221-4424 (Toll Free) - 303-221-5524 (Fax)

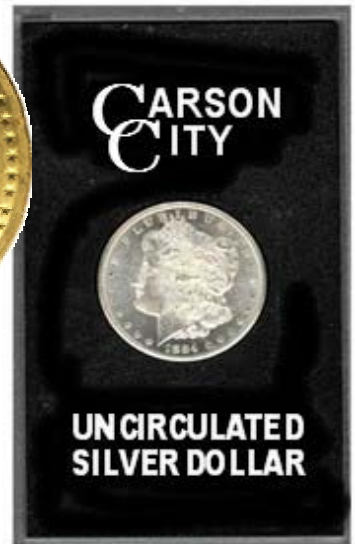


H  
O  
M  
E  
O  
F  
T  
H  
E  
A  
M  
A  
Z  
I  
N  
G  
B  
R  
O  
K  
E  
N  
C  
C

# NORTHERN NEVADA COIN

[www.brokencc.com](http://www.brokencc.com)

*WE BUY & SELL  
RARE COINS.  
VISIT US ON THE  
WEB TO VIEW  
OUR  
EVER-CHANGING  
INVENTORY*



**3655 B RESERCH WAY  
CARSON CITY, NV 89706**

**1-888-836-8DOLLAR**

**1-888-836-5527**

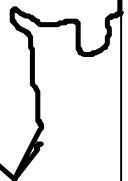
**1-775-884-1660**



MEMBER



MEMBER  
Northern Nevada,  
Inc.



# ERROR WORLD

Join the *hottest*

**Error Coin Club on the Net!**

**[errorworldclub.org](http://errorworldclub.org)**

The Error World on-line coin club exists for the purpose of advancing the knowledge and the field of error coin collecting.

Error World is dedicated to the promotion, discussion and dissemination of facts and ideas about error coinage, both domestic and world-wide.

Error World exists as a vehicle to bring collectors of both foreign and domestic error coinage together in a professional and relaxed atmosphere where they can exchange information, display photos and engage in lively debate about error coinage.

---

Error World is a non-profit organization with all revenues being put back into the club to provide improved services to the members of the club.

Error World will, from time to time, accept contributions from designated Patrons in the form of contest prizes, and/or cash to be used to defray club expenses.

Error World will, from time to time, attempt to obtain sponsors from the numismatic field who will bring price saving offers to Error World members.

Mike Byers is the Patron of [errorworldclub.org](http://errorworldclub.org)



# TransLine

Wholesale Supply Company

*"Everything But Coins"™*

**Toll Free: 800-575-4007**

## 2003 Wholesale Supply Catalog



# MINTERRORNEWS™ MUSEUM

Enjoy viewing the major mint errors in our museum. These are exciting and dramatic examples of major mint errors that we wanted to share with our readers.

Lincoln Cent  
Brockage on Dime Planchet  
PCGS MS 66

1968-S Lincoln Cent  
Struck on Clad Dime Planchet  
PCGS MS 66



1924 \$20 Gold Piece  
Rim Clip Planchet 6:00  
PCGS MS 64

1999-P SBA Dollar  
Double Struck  
ANACS MS 65



1999-P SBA Dollar  
Multi Struck Broadstruck  
ANACS MS 63



1929-S Standing Liberty Quarter  
Double Clip  
ANACS MS 60



1902 Morgan Dollar  
Struck 5% Off-Center  
PCGS AU 58



1999-P SBA Dollar  
60% Off-Center on Quarter Planchet  
PCGS MS 65



2000-P Massachusetts Quarter  
Struck on Feeder Finger Tip  
PCGS MS 65



1800 Dollar  
Struck 3% Off-Center  
PCGS VF 35



1919 Lincoln Cent  
Struck on Argentina 10c Planchet  
ANACS AU 50



1999-P SBA Dollar  
Triple Struck Die Cap Brockage  
ANACS MS 63



1958 Jefferson Nickel  
Struck on 1958 Cuba 1c  
ANACS MS 62



1981 Kennedy Half  
Double Struck Obverse Die Cap  
ANACS MS 62



1999 Lincoln Cent  
Struck on Feeder Finger Tip  
ANACS MS 65



2000-P Sacagawea Dollar  
Struck on SBA Dollar Planchet  
PCGS MS 67



1999-P New Jersey Quarter  
Struck on Feeder Finger Tip  
PCGS MS 64



1999-P Delaware Quarter  
Struck on Experimental Planchet  
PCGS MS 64



(1900) South African 1 Pond  
Type 2 Blank Planchet  
NGC



1856 Large Cent  
Obverse Cap/Brockage Reverse



(1937) Great Britain 3 Pence  
Edward VIII Die Trial  
Uniface Nickel/Brass - Unique



1871 3¢ Nickel  
Struck on 1¢ Stock  
NGC MS 62 BN



# Frequently Asked Questions

---

## What are bonded coins?



Bonded coins are created when the feeder system, which supplies blank planchets to the coin press, malfunctions and jams. When this occurs, a struck coin is not properly ejected and another planchet is fed into the collar and is struck. This struck coin will land on top of the previously unejected strike. These coins will then crush and bond together. This may happen multiple times as more coins bond.

This Lincoln Cent has been bonded on three irregularly shaped copper-zinc planchets.



# Frequently Asked Questions

---

## What is a die cap?



A die cap is caused when a struck coin sticks to the upper hammer die. Once the coin is stuck to the die face, the reverse of the struck coin becomes the new die face. When the next blank is fed into the collar and the strike occurs, the reverse design of the adhered struck coin impresses itself into the new blank. This struck coin is a brockage strike. The coin that adhered to the upper die is known as a die cap. This process repeats itself as more coins are struck by the cap. The greater the number of strikes, the higher the cap metal will be pushed around the upper die shaft. Eventually, the cap brakes away from the die in the shape of a thimble.

## Upcoming Coin Shows



Visit Mike Byers at his table.

Oct. 28-30	Las Vegas Coin Show
Nov. 19-21	Santa Clara Coin Expo
Dec. 2-5	Baltimore Coin and Currency Convention
Jan. 13-16	FUN Show Orlando, FL
Feb. 24-26	Long Beach Coin & Collectables Expo
March 10-12	Mid-Winter ANA Kansas City, MO
April 1-3	Santa Clara Coin Expo

## Karl Stephens

ANA LM 3112

**Dealer in World Coins,  
Patterns & Mint Errors**

P.O. Box 3038, Fallbrook, CA 92088  
760-731-6138 • FAX: 760-731-9132  
www.karlstephensinc.com

## MINT ERROR NEWS MAGAZINE

### Coming in Issue 9

- An Expanded Price Guide Including World Errors
- A Feature on A New Error Coin Book: Mint Error Guide
- A Report on Off-Center Errors
- A Mint Error News Market Report

### Wanted To Buy: Buffalo Nickel Errors

Large laminations, straight clips, curved clips, off centers, broadstrikes or cuds on any of the following dates: 1925-D, 1926, 1926-D, 1927-S, 1928-D, 1935-D, 1937-S.

**Also:**

Off centers	1930, 1931-S, 1938-D
Off centers	55% & 70%
Off centers	55% to 75% at 9:00
Misaligned die	10% or more
Reverse cuds	K-3, K-8, K-10
Curved Clips	Obverse - K-1, K-7, K-12

*Please describe & price.*

**Bob Entlich  
c/o Stacks  
123 W. 57th St.  
New York, NY 10019**

# BYERS NUMISMATIC CORP

MIKEBYERS.COM



**The Largest Dealer of the World's Rarest Mint Errors™**

U.S. ERRORS • WORLD & ANCIENT ERRORS • DIE TRIALS • CURRENCY ERRORS



We handle the world's finest Major Mint Errors and Numismatic Rarities. Our premier MULTI-MILLION DOLLAR INVENTORY includes only the best, museum quality, world class and exotic U.S. and World Major Mint Errors and Die Trials. Many of our purchases are immediately sold to our customers, and don't even reach our website to be sold, or eBay to be auctioned. Send us your want list, we may have what you're looking for.

## MIKE BYERS

P.O. Box 5090, San Clemente, CA USA 92674

Office: 949-276-7072 • Fax: 949-276-7073

Fed Ex Address only: 1001 Avenida Pico #C 612, San Clemente, CA 92673

E-Mail: [mike@mikebyers.com](mailto:mike@mikebyers.com) • Website Design: [sam@mikebyers.com](mailto:sam@mikebyers.com)

Mike Byers, Professional Numismatist since 1978

Byers Numismatic Corp. A California Corporation Since 1980

Mike Byers is a consultant to ANACS for Mint Errors

