

# MINT **ERROR** NEWS<sup>TM</sup> MAGAZINE

Bringing the latest mint error news to the collector.



## 1989-D Lincoln Cent Transitional Double Struck on Bronze Planchet



Excited About Mint Errors?  
Join Error World Club  
[errorworldclub.org](http://errorworldclub.org)



Issue 12 • Winter 2005  
A Mike Byers Publication



# Al's Coins

Dealer in Mint Errors  
and Currency Errors

[alscoins.com](http://alscoins.com)



Specializing in Mint Errors and Currency Errors for 25 years. Visit my website to see a diverse group of type, modern mint and major currency errors. We also handle regular U.S. and World coins.



I'm a member of CONECA and the American Numismatic Association. I deal with major Mint Error Dealers and have an excellent standing with eBay. Check out my show schedule to see which major shows I will be attending. I solicit want lists and will locate the Mint Errors of your dreams.

## Al's Coins

P.O. Box 147

National City, CA 91951-0147

Phone: (619) 442-3728

Fax: (619) 442-3693

e-mail: [alscoins@aol.com](mailto:alscoins@aol.com)





# MINT ERROR NEWS MAGAZINE

Bringing the latest mint error news to the collector.



Issue 12 • Winter 2005

Publisher & Editor  
**Mike Byers**

Design & Layout  
**Sam Rhazi**

Contributing Editors

**Tim Bullard**

**Allan Levy**

Contributing Writers

Harlan J. Berk

Heritage Galleries & Auctioneers

Henry Hilgard • Patrick Glassford

Saul Teichman • Fred Weinberg

Advertising

The ad space is sold out. Please e-mail  
editor@minterrornews.com to be added  
to the waiting list.

## Subscriptions

We are not offering a paid subscription at this time. Issues of Mint Error News Magazine are mailed to our regular customers and coin dealers that we are associated with. Issues can be downloaded for free at [minterrornews.com](http://minterrornews.com)

Mint Error News is the official publication of [minterrornews.com](http://minterrornews.com). All content Copyright 2005 Mint Error News. P.O. Box 5090, San Clemente, CA 92674. All rights reserved. No part of this magazine may be reproduced in any form without the expressed written permission of the publisher. Opinions expressed in this publication do not necessarily represent the viewpoints of Mint Error News. This publication is distributed with the understanding that the information presented herein is from various sources for which there can be no warranty or responsibility by the publisher as to accuracy, price or completeness. Mint Error News accepts unsolicited manuscripts, artwork, and photographs for publication. Direct editorial submissions to [editor@minterrornews.com](mailto:editor@minterrornews.com) or P.O. Box 5090, San Clemente, CA 92674. All unsolicited material will not be returned.

PRINTED IN THE U.S.A.

# Mint Error News Magazine

Issue 12 • Winter 2005

- Table of Contents -

Mike Byers' Welcome	4
Off-Center Errors	5
Off-Metal Errors	9
Clad Layer Split Off Errors	13
Buffalo 5¢ "Speared Bison" & Wisconsin 25¢ Extra Leaves	15
1989-D Lincoln Cent Transitional Double Struck on Bronze Planchet	18
1989-D Lincoln Cent Struck on Bronze Planchet	19
1990-D Lincoln Cent Struck on Bronze Planchet	20
1974-D Ike Dollar Struck on 40% Silver-Clad Planchet	21
1977-D Kennedy Half Dollar Struck on a 40% Silver Planchet	22
1944-P Jefferson Wartime Nickel Transitional Mint Error	23
1838 Gobrecht Struck Over 1859 Dollar	24
Double Struck Gold Staters of Brutus	25
Double Struck Greek Gold Stater	26
Silver Dollar Errors	27
1952 Lincoln Cent Double Denomination on Struck Dime	29
Unique 1860 \$5 Clark Gruber Reverse Die Trial	30
1912 \$2½ Indian Gold Struck 10% Off-Center	32
1906-D \$20 Liberty Gold Broadstruck	33
Copper Ingot - From the Fred Weinberg Collection -	34
Unique Pair of 1825 English Gold Sovereign Die Trials	36
Off-Metals Struck At The San Francisco Mint	40
How HOT is the error coin market?	42
Mint Error News Price Guide	48
Exclusive Discounts	66
Ethiopia Werk Muled With KM-18 Reverse	73
Mercury Dime Double Struck 2nd Strike 25% Off-Center	74
1794 Franklin Token Incomplete & Curved Clips	75
Canadian on Foreign Overstrikes	76
America's first Double Denomination	78
1886 Broadstruck Gold Dollar	81
Mint Error News Museum	92
Frequently Asked Questions	96

# MINTERRORNEWS<sup>TM</sup> MAGAZINE

Bringing the latest mint error news to the collector.



Mike Byers, Publisher & Editor Welcomes You!

Welcome to Mint Error News Magazine, bringing the latest mint error news and information to the collector. This is our third year bringing you both a print magazine and an on-line PDF magazine filled with articles, features and discoveries of major mint errors (striking errors) from the United States and around the World. Minterrornews.com has become one of the most popular and informative Internet resources for mint errors and is read by thousands of dealers and collectors.

Two major Mint Error News sponsors are Mike Byers and ANACS. Mike Byers is the Publisher and Editor of Mint Error News Magazine.



Mike Byers (mikebyers.com) has been a Professional Numismatist since 1978. He specializes in U.S. and World errors, and is now the largest dealer of the world's rarest mint errors. His new discoveries of major mint errors has been front page news for years. Mike Byers is also a Consultant for ANACS for Mint Errors.

Mike Byers is a life member of ANA since 1985, a charter member of NGC and a featured dealer/member of PCGS. He is also a founder member of the California Coin & Precious Metals Association, a life member of the Central States Numismatic Society and a member of ICTA.



ANACS is one of the three major grading services. They have been authenticating, certifying and encapsulating mint errors since 1991 which is years longer than the other two grading services combined. ANACS is highly respected in the Numismatic Community and has extensive experience in authenticating mint errors.

Two other sponsors to minterrornews.com are Tim Bullard (errorcointrader.com) and Allan Levy (alsocoins.com). Because of their combined experience and insight of the error coin market, they will bring valuable news and information to minterrornews.com.

Additional sponsors are CoinLink, CoinFacts.com, errorworldclub.org, Eureka Trading, uspatterns.com, Northeast Numismatics and Robert L. Astrich. We encourage collectors and dealers to submit articles and photos of major mint errors that we may feature on the website.



# Off-Center Errors

by Al Levy (alscoins.com)

Here are records of recent sales of off-center mint errors on eBay:

1. All coins were listed on eBay and closed from April 1, 2005 to June 30, 2005.
2. All lots had buyers. If the coins actually changed hands is unknown.
3. A picture accompanied each lot or it was not recognized.
4. Mislabeled items were ignored.
5. Some lots may have changed hands more than once.

6. "D" next to the date symbolizes that the coin had damage or was scratched.
7. "C" next to the date symbolizes that the coin was cleaned.
8. "B" next to the date symbolizes that the coin had damage and was cleaned.
9. If the date or mint mark was missing or partially visible, parentheses were used.
10. Postage/handling/insurance fees were ignored.
11. Major auctions were not listed.

DENOM	YEAR	NOTES	GRADE	LESS:11%	11%-35%	36%-75%	OVER 75%
1c	1865		PCGS 6		128.60		
1c	1865		PCGS 8		255.00		
1c	1891		PCGS 04	85.00			
1c	(1897)	D	XF	148.05			
1c	1898		ICG 64 BRN			819.10	
1c	1901	D	VF	175.00			
1c	1901		ANACS 55		189.50		
1c	1901		PCGS 30	88.86			
1c	(19)01		PCGS 15		131.50		
1c	(1)902		ANACS 63 BRN		258.00		
1c	1904		ANACS 12	56.00			
1c	(1904)		NGC 45	138.02			
1c	1904		PCGS 15	45.99			
1c	1917-D		VG		63.00		
1c	1917-D		PCGS 35		135.50		
1c	1918		GOOD		33.00		
1c	1919-S		XF		61.26		
1c	1929-S		PCGS 45		107.50		
1c	1930-D		XF		53.00		
1c	1934		AU		66.00		
1c	1934		PCGS 62 RED	68.01			
1c	193(5)		CH BU R&B		56.00		
1c	1935		NGC 62 BRN	85.00			
1c	1935		PCGS 64 RED		126.50		
1c	1936		BU BRN		73.00		
1c	1937		VF		40.00		
1c	1937		UNC BRN		48.03		
1c	1937		NGC 64 BRN	58.00			
1c	1941		XF	20.01			
1c	1941		AU		41.05		
1c	1941		UNC R&B	44.55			
1c	1941-S		ANACS 63 R&B	36.00			
1c	1942		NGC 66 R&B	95.00			
1c	1943		AU	49.99			
1c	1943-S		AU	90.00			
1c	1943-S	D	UNC		200.00		
1c	1943-S		ANACS 60		200.00		
1c	1944		XF		25.49		
1c	1944		AU	30.51			
1c	1944		UNC BRN	23.49	50.80		
1c	1945		ANACS 63 BRN		52.89		
1c	1945-S		UNC BRN		59.98		
1c	1946-S		XF	26.78			
1c	1946-S	D	XF		27.00		
1c	194(6)-(S)		NGC 63 BRN	46.99			
1c	194(?) -S		NTC 55		21.76		
1c	1951-D		BU R&B		68.00		

DENOM	YEAR	NOTES	GRADE	LESS:11%	11%-35%	36%-75%	OVER 75%
1c	1951-D		PCGS 64 BRN			106.60	
1c	1952-D	D	XF			27.76	
1c	1952-D		UNC R&B		86.00		
1c	1952-D		BU R&B		51.55		
1c	1952-D		PCGS 63 R&B			84.00	
1c	195(2)-(D)		CH BU BRN		79.95		
1c	1953-D		AU			52.00	
1c	1956-D	D	UNC BRN			44.58	
1c	1957-D		UNC BRN				49.55
1c	1957-D		ANACS 64 RED				71.00
1c	195(?) -D WHEAT		PCI 64 GRN LBL		77.99		
1c	195(9)-(?)		UNC R&B		36.01		
1c	1961-D		ANACS 65 BRN			42.41	
1c	1962		GEM BU BRN				306.00
1c	1964		UNC R&B		18.27		
1c	1964		CH BU R&B	14.95			
1c	1964-D		ANACS 61 BRN			22.50	
1c	1964-D		PCGS 63 R&B				30.57
1c	1964-(D)		AU			18.50	
1c	(1)964-D		BU R&B				18.49
1c	1965		PCGS 62 RED		29.92		
1c	1966		BU R&B				21.56
1c	1966		GEM BU R&B	8.50			
1c	1967		GEM BU RED			30.00	
1c	(79)67		UNC BRN				10.50
1c	1968-D	C	AU			16.49	
1c	1968-D		AU			23.32	21.50
1c	1968-D		UNC BRN			16.05	
1c	1968-D		BU R&B			12.50	
1c	1968-D		CH BU R&B			27.02	
1c	1968-D		CH BU RED			24.99	
1c	1968-D		ANACS 58				22.00
1c	1968-D		ANACS 63 R&B			22.50	
1c	1968-D		ANACS 64 R&B			23.01	
1c	1969-D		AU			19.49	
1c	1969-D		BU BRN			31.04	
1c	1969-D		BU RED			20.49	18.00
1c	(19)69-(?)		BU BRN			10.50	
1c	(7969)-(?)		CH BU RED				16.50
1c	1970-D		AU				10.56
1c	1970-D	D	UNC BRN			9.00	
1c	1970-D		UNC BRN			12.95	
1c	1970-D		BU BRN		23.49	16.23	
1c	1970-D		BU R&B			19.11	
1c	1970-D		CH BU R&B			17.98	
1c	1970-D		GEM BU BRN			18.49	
1c	1970-D		ANACS 63 BRN			21.50	

# Off-Center Errors

DENOM	YEAR	NOTES	GRADE	LESS:11%	11%-35%	36%-75%	OVER 75%
1c	1971-S		VF			129.50	
1c	197(2)-D		BU BRN			14.50	
1c	1973-D	D	AU			4.27	
1c	1973-D	D	UNC R&B			13.00	
1c	1973-D		BU RED	11.71			
1c	1973-D	D	BU RED	6.99			
1c	1973-D		CH BU RED	10.60	23.00		
1c	1974		UNC BRN			11.26	
1c	1974-D		BU BRN			16.51	
1c	1974-D		BU R&B			21.50	
1c	1975		CH BU R&B		18.59		
1c	(197)7		CH BU R&B			5.99	
1c	1977		CH BU R&B			17.05	
1c	1979		XF			2.26	
1c	1979		UNC R&B			16.05	
1c	1979		BU R&B			11.53	
1c	1980		UNC R&B		10.51		
1c	1980		BU BRN			13.25	
1c	1981		UNC RED			29.99	
1c	1981		BU BRN		9.99	5.75	
1c	1981		BU R&B	3.24			
1c	1981		GEM BU RED		39.99		
1c	19(81)-(?)		BU BRN			20.01	
1c	1982 LD CU	D	UNC BRN				5.99
1c	1982 LD CU		UNC BRN			8.50	
1c	1982 LD CU		BU R&B	7.50		13.29	
1c	1982-(?) LD CU		UNC R&B			16.01	
1c	(?982)-(?) LD CU		UNC R&C			5.51	
1c	1982 SD CU		BU R&B	9.95			
1c	1983		AU	2.76			
1c	1983	D	UNC RED			2.88	
1c	1983		UNC RED	4.99	4.99	5.75	
1c	1983		UNC R&B		8.76	6.35	
1c	1983		BU RED	4.63	5.12	9.34	17.19
1c	1983		CH BU RED	3.32	23.37	7.92	
1c	1983		GEM BU RED			8.51	9.99
1c	198(3)		CH BU BRN			7.99	
1c	198(3)		CH BU RED			48.51	
1c	1983		NGC 64 R&B			17.50	
1c	1983-D		BU RED			11.31	
1c	1984		BU BRN		6.77		
1c	1984		BU RED		6.49	10.53	
1c	1984		GEM BU RED		5.24		
1c	1984-D		BU RED			12.51	
1c	1985		BU R&B			6.00	
1c	1985		BU BRN			9.07	12.00
1c	1985	D	BU RED			14.24	
1c	1985		BU RED			4.99	
1c	1985-D		BU R&B			10.50	
1c	1985-(?)		CH BU RED			8.51	
1c	1986		BU RED			9.51	
1c	1986		CH BU RED		8.99		
1c	(?986)-(?)		AU			2.99	
1c	1987		XF	5.00			
1c	1987		UNC R&B	1.41	5.50	7.55	
1c	1987		GEM BU RED			9.99	
1c	1988		AU	3.00		6.51	
1c	1988	D	AU	1.30			
1c	1988	D	UNC RED			13.06	
1c	1988		BU RED	2.78			
1c	1988		GEM BU RED	5.80	4.95	8.10	
1c	1988-D		BU RED			3.95	
1c	1988-D		GEM BU RED			14.50	
1c	1989		UNC R&B			4.69	
1c	1989		UNC RED		6.99		
1c	1989		CH BU RED	5.25	7.08		
1c	1989		GEM BU RED			10.49	
1c	1990	D	BU RED	3.99		6.00	
1c	1990		BU RED		10.50		
1c	1990		CH BU BRN		9.99		
1c	1992		UNC BRN			2.75	
1c	1992	D	BU RED			4.69	
1c	199(2)	D	BU RED			5.24	
1c	1992		NGC 65 RED			16.05	
1c	1993		GEM BU BRN				14.99
1c	1993		GEM BU RED		7.51		
1c	1993		PCGS 63 RED		13.99		
1c	1993-D		CH BU RED			12.66	
1c	1993-D		GEM BU RED	9.99			
1c	1994-D		BU RED			9.99	
1c	199(5)		BU RED	2.00			
1c	1995		GEM BU R&B			7.00	

DENOM	YEAR	NOTES	GRADE	LESS:11%	11%-35%	36%-75%	OVER 75%
1c	1995		GEM BU RED	4.25		6.70	
1c	199(5)		BU RED			8.00	
1c	1995-D		CH BU R&B			7.45	
1c	1995-D		GEM BU RED				16.95
1c	199(6)-D		GEM BU RED				15.52
1c	1997		BU RED			4.82	
1c	1997		GEM BU RED	3.99			
1c	1998		ANACS 64 RED		11.52		
1c	1998		NGC 66 RED			24.99	
1c	1998-D		NGC 64 RED			16.51	
1c	1999		ANACS 63 RED	10.50			
1c	1999		ANACS 64 RED	8.49			
1c	1999		ANACS 65 RED	11.37			
1c	1999		ICG 65 RED	9.99			
1c	1999-D		GEM BU RED			6.05	
1c	2000		ANACS 62 RED	10.50			
1c	2000		ANACS 63 RED	9.10			
1c	2000		ANACS 64 RED	18.75			
1c	2000		ANACS 65 RED	15.50	10.50		
1c	2000		NGC 64 RED			23.35	
1c	2000		NGC 65 RED			15.50	
1c	200(?)		ANACS 64 RED			10.50	
1c	2000-D	D	UNC RED			4.25	
1c	2001		ANACS 65 RED	10.75	12.62		
1c	2001		IGS 64 RED		7.99		
1c	2001-D		GEM BU RED			32.78	
1c	2003	D	GEM BU	16.35			
1c	2003		GEM BU	10.28			
3c	2003-D		GEM BU	33.99			
3c	1873		VG		173.50		
5c	1895		PCGS 06	113.50			
5c	1896		ANACS 06		169.50		
5c	1900	D	VF	78.00			
5c	1903		PCGS 55		341.02		
5c	1907		NGC 53	273.87			
5c	1913 TI	C	AU	315.00			
5c	1918		AU		760.00		
5c	1919		XF	357.51			
5c	1919		PCGS 58		688.80		
5c	1920-(?)		ANACS 63		555.00		
5c	1936	C	ANACS NET 45	158.05			
5c	(?)64-(?)		GOOD			113.60	
5c	1964		BU			39.02	
5c	(1965)		CH BU		57.01		
5c	1970-S	D	BU	29.95			
5c	1971-D	D	AU			37.56	
5c	1972		BU			24.27	
5c	1973	D	GEM BU			19.39	
5c	1974	C	UNC			26.99	
5c	1974	D	UNC			20.49	
5c	(1)976		GEM BU			27.00	
5c	(197)6		UNC		20.01		
5c	1977		UNC		12.50		
5c	1978		BU			26.00	
5c	1978		GEM BU			26.01	
5c	1979		CH BU			32.31	
5c	(?9)79		BU			26.01	
5c	(?)79		BU			10.50	
5c	1980-P		BU			19.01	
5c	1980-P		GEM BU			27.65	
5c	(?)80-P		CH BU			10.51	32.00
5c	1981-D		GEM BU			32.31	
5c	1981-P		BU			14.99	
5c	1981-P		CH BU	10.51			
5c	1981-P		GEM BU	8.53			
5c	1981-P		ANACS 64			22.50	
5c	(1981)-P		CH BU	7.50			
5c	(?)81-P		CH BU			18.50	
5c	1983-D		CH BU R&B			10.46	
5c	1983-P		UNC		16.50	22.50	
5c	(1983)-P		BU		13.81		
5c	(?9)83-P		GEM BU			14.51	
5c	(?8)3-P		BU			16.50	
5c	(?9)84-D		CH BU				15.55
5c	1984-P		UNC			13.59	
5c	1984-P		BU			12.01	
5c	(?9)84-P		ANACS 65			19.99	
5c	(?)84-P		GEM BU				20.60
5c	(?)84-P		ANACS 65			20.50	
5c	1985-P		BU			8.60	
5c	1985-P		GEM BU	31.00		14.49	
5c	(?9)87-D		ANACS 63			29.56	



# Off-Center Errors

DENOM	YEAR	NOTES	GRADE	LESS:11%	11%-35%	36%-75%	OVER 75%
5c	1988-D		CH BU			20.50	
5c	1988-P		CH BU			18.02	
5c	(?)89-P		ICG 63			15.61	
5c	(1990)-(P)		CH BU		12.15		
5c	1994-P		BU			22.28	
5c	(?)994-P		CH BU			21.50	
5c	1995-P		GEM BU	3.00			
5c	199(5)-P		GEM BU			12.59	
5c	(?)95-P		GEM BU			21.02	
5c	1996-D		GEM BU			17.51	
5c	(1)996-D		GEM BU			44.01	
5c	1996-P		BU			9.55	
5c	1996-P		CH BU			10.37	
5c	(1)996-P		GEM BU			9.43	
5c	(1996)-P		GEM BU	18.50			
5c	1997-P		CH BU			9.99	
5c	(1)997-P		ch bu			9.99	
5c	1998-D		GEM BU	10.27			
5c	(?)998-D		CH BU			21.71	
5c	1998-P		CH BU			9.99	
5c	1998-P		GEM BU	9.68		15.52	
5c	1998-P		PCGS 65			31.00	
5c	1999-D		BU			7.88	
5c	1999-D		GEM BU			12.26	17.50
5c	(?)99-D		GEM BU			14.02	20.50
5c	1999-P		UNC			7.00	
5c	1999-P		CH BU		10.50	14.50	
5c	1999-P		GEM BU	9.35		19.51	
5c	199(9)-(?)		GEM BU				12.51
5c	(1999)-P		GEM BU		19.53		
5c	1999-(?)		BU				9.95
5c	1999-P		PCGS 64	9.99			
5c	2000-D		GEM BU			17.54	
5c	(2)000-D		GEM BU			14.76	
5c	(?)000-D		GEM BU			9.38	
5c	(?)000-D		GEM BU			11.50	
5c	(?)00-D		GEM BU				7.05
5c	2000-(?)		PCGS 63				45.00
5c	(?)001-D		GEM BU			20.01	
5c	(?)01-D		GEM BU				10.25
10c	1875-CC	D	ANACS NET 50	393.67			
10c	1889-(S)	D	AG		214.50		
10c	1904		PCGS 35		356.51		
10c	1941		VF	91.11			
10c	1944		XF		77.00		
10c	1944	D	AU		46.00		
10c	1964-(?)		NGC 66			113.50	
10c	(19)64-(?)		ICG 62				87.00
10c	(?)64-(?)		ICG 62			90.99	
10c	(?)66		UNC				46.00
10c	(?)69-D		GEM BU				23.00
10c	1972		GEM BU	19.95			
10c	1973-D		CH BU			34.56	
10c	1975-D		GEM BU			36.99	
10c	1976		CH BU			32.31	
10c	1(976)		BU	27.85			
10c	(1976)		BU	26.99			
10c	1977		UNC		15.50		
10c	1978	D	AU	7.50			
10c	1978		GEM BU		15.50		
10c	1979		GEM BU	14.16			
10c	1980-P		BU	9.99			
10c	1981		CH BU			22.01	
10c	1983-P		UNC	10.50			
10c	1987-D		GEM BU			82.99	
10c	1988-D		GEM BU			29.95	
10c	1988-P		BU	27.85			
10c	1988-P		GEM BU		14.00		
10c	1989-D		BU			19.38	
10c	1989-P		VF			4.25	
10c	1990-P		UNC			17.16	
10c	1991-P		BU			22.05	11.05
10c	1993-P		BU			26.77	
10c	1994-D		GEM BU			40.58	
10c	1994-P		BU		10.50	14.16	
10c	1994-P		GEM BU	8.47			
10c	19(94)-P		GEM BU	9.50			
10c	1997-P		NGC 64		20.50		
10c	1998-P		BU	13.63			
10c	1998-P		CH BU		8.51	16.77	
10c	1999-D		PCI 65		18.50		
10c	1999-P		GEM BU			17.00	

DENOM	YEAR	NOTES	GRADE	LESS:11%	11%-35%	36%-75%	OVER 75%
10c	1999-P		ANACS 63			11.99	
10c	199(9)-P		GEM BU			7.99	
10c	200(0)-(P)		GEM BU				10.09
10c	2003-P		BU			13.51	
25c	1965	D	BU			20.88	
25c	1965		ANACS 63			18.50	
25c	1974		UNC			12.27	
25c	1974		GEM BU			21.75	
25c	1976	D	UNC			39.99	
25c	1976		CH BU				54.79
25c	1976		GEM BU		97.00		
25c	1976		ICG 61			115.00	
25c	1977	D	BU			24.95	
25c	1977		UNC		9.95		
25c	(1977)-D		NGC 63		29.00		
25c	1978		GEM BU			30.01	57.00
25c	(1978)		GEM BU				39.99
25c	1979		UNC			18.50	
25c	1980-P	D	AU			9.99	
25c	1980-P		AU			11.75	
25c	(1981)-P		UNC			11.50	
25c	(19)81-P		AU			16.51	
25c	(?)982-(?)		PCGS 64				87.10
25c	1983-P		XF		13.90		
25c	1983-P		AU			49.00	
25c	1983-P	D	UNC				50.00
25c	1983-P		UNC		17.50	16.52	45.00
25c	1983-P		BU			60.85	
25c	1983-P		CH BU		26.02	41.91	
25c	1983-P		GEM BU		20.05		
25c	(198)3-P		BU			27.00	
25c	(1983)-P		UNC		9.99	47.00	
25c	(19)83-P		UNC		21.05		
25c	1984-P	D	AU		2.75		
25c	1984-P		AU		7.25		
25c	1984-P		UNC		15.12	26.99	
25c	1984-P		BU		20.03		
25c	(19)84-P		BU			19.28	
25c	1985-P		AU			12.60	
25c	1985-P		UNC			17.94	
25c	198(5)-(P)		BU			24.28	
25c	(1985)-P		ANACS 64		20.51		
25c	1985-(?)		ANACS 64				69.60
25c	(198)5-P		BU		11.50		
25c	(1985)-P		CH BU		31.00		
25c	(?)8)5-P		BU			61.01	
25c	(198)6-P		ANACS 64		27.98		
25c	1986-P		PCGS 65		19.95		
25c	1986-(P)		ICG 67				60.00
25c	1987-P		AU		8.17		
25c	1988-P		GEM BU			41.95	
25c	1989-P		AU		13.49		
25c	1989-P	B	ANACS NET 55			22.72	
25c	1989-P		CH BU			33.99	
25c	198(?)-(?)		NGC 58				41.00
25c	1990-P		AU			20.05	
25c	1990-P		UNC		21.00		
25c	1990-P		BU			33.01	
25c	1992-P		AU		3.78		
25c	1993-D		UNC		15.05		
25c	1995-P		BU			20.50	
25c	1995-P		GEM BU			30.78	
25c	1995-(?)		BU				84.55
25c	199(5)-(?)		GEM BU				64.00
25c	1996-D		GEM BU		7.49		
25c	1996-P		BU		14.52		
25c	1997-D		GEM BU		7.55		
25c	1998-D		GEM BU		11.50		
25c	1998-P		BU			25.00	
25c	1998-P		GEM BU		16.16		
25c	199(?)-(?)		GEM BU				24.50
25c	19(97)-(?)		GEM BU				38.75
25c	DE 1999-P		ICG 65		127.50		
25c	DE		BU				213.25
25c	PA		GEM BU				206.50
25c	PA (?) -D		GEM BU				240.35
25c	NJ 1999-(?)		BU			291.51	
25c	GA		GEM BU				86.32
25c	CT 1999-D		AU		28.80		
25c	MA 2000-P		PCGS 67			163.50	
25c	NH 2000-D		BU		33.95		
25c	NH 2000-(?)		CH BU			125.00	

# Off-Center Errors

DENOM	YEAR	NOTES	GRADE	LESS:11%	11%-35%	36%-75%	OVER 75%
25c	NH (?) -P		BU		102.01		
25c	NH (?) -P	D	UNC		125.50		
25c	NH 2000-P		ANACS 65	62.50			
25c	NH 20(00)-P		ANACS 65		80.00		
25c	NH (2000)-P		ANACS 65		83.99		
25c	NH 2000-P		ANACS 66		86.99		
25c	NH 2000-(?)		ANACS 65		128.76		
25c	NH 2000-P		PCGS 64	54.00	107.25		
25c	NH 2000-P		PCGS 65	56.00	80.00		
25c	NH (?) -P		PCGS 64		113.50		
25c	SC 2000-P		BU	50.75			
25c	SC 2000-P		CH BU	52.66			
25c	SC 2000-P		GEM BU	65.99			
25c	SC 2000-P		NGC 65	62.00			
25c	SC 2000-P		PCGS 63	76.01			
25c	SC 2000-P		PCGS 64	61.01			
25c	SC 2000-P		PCI 66	38.51			
25c	VA 2000-P		BU	50.00			
25c	VA 2000-P	D	BU	36.99			
25c	VA 2000-P		NGC 66	67.69			
25c	VA (?) -P		NGC 64		284.99		
25c	VA 2000-P		PCGS 58	55.01			
25c	VA		PCGS 63				102.50
25c	NC 2001-P		BU	37.50			
25c	NC 2001-P		CH BU	52.33			
25c	NC 2001-(?)		CH BU	39.95			
25c	NC 2001-P		ANACS 64	31.00			
25c	TX 2004-D		GEM BU	177.50			
25c	WI 2004-D		GEM BU		688.35		
25c	CA 2005-D		GEM BU	72.91			
50c	1964		PCGS 65	250.00			
50c	(?)971-D		PCGS 63			720.00	
50c	1976		PCGS 62	81.00			
50c	1979		UNC	137.01			
50c	(1979)		ANACS 60		154.01		
50c	1979		ICG 63	137.50			
50c	1984-P	D	BU			685.00	
50c	1989-P		BU	76.00			
50c	1990-P		BU		149.38		
50c	1990-P		PCGS 66		202.49		
50c	(1990)-P		BU	165.00			

DENOM	YEAR	NOTES	GRADE	LESS:11%	11%-35%	36%-75%	OVER 75%
1\$	1974-D		PCGS 65	374.00			
1\$	1978		PCGS 63	150.00			
1\$	1978-D		PCGS 62	123.81			
1\$	1978-D		PCGS 64	117.50			
1\$	1979-P		XF	56.00			
1\$	1979-P		CH BU		129.01		
1\$	1980-S		BU	63.05			
1\$	1999-P		NGC 65		184.25		
1\$	1999-P		PCGS 65	118.17			
1\$	1999-P		PCGS 66	102.56			
1c	ND IHC		ANACS VF 20		202.51		
1c	ND IHC		ANACS 58		213.50		
1c	ND WHEAT		XF			20.70	
1c	ND WHEAT		AU			29.50	
1c	ND WHEAT		UNC R&B			32.99	
1c	ND WHEAT		BU BRN			26.50	26.50
1c	ND WHEAT		CH BU BRN			25.07	34.33
1c	ND ZINC		ANACS 64 BRN				
1c	ND ZINC		ANACS 64 RED		17.50	7.50	
1c	ND ZINC		ANACS 65 RED			9.99	
1c	ND ZINC		PCGS 63 RED			15.50	
5c	ND-S BUFFALO	D	AG		157.50		
5c	ND JEFFERSON		ANACS 63				6.10
5c	ND JEFFERSON		PCGS 58	9.99			
5c	ND JEFFERSON		NGC 67 FS		23.10		
5c	ND JEFFERSON		SEGS 65			30.00	
10c	ND SILVER		BU			90.00	
10c	ND CLAD	D	ANACS NET 55				21.00
10c	ND CLAD		PCGS 63				15.50
25c	ND (1976)		BU			201.52	
25c	ND (1976)		PCGS 64			97.59	
25c	ND-D CLAD		BU			45.94	29.00
25c	ND-D CLAD		CH BU			33.85	
25c	ND-D CLAD		GEM BU		32.00	39.78	
25c	ND-D CLAD		ANACS 62		31.00		
25c	ND-P CLAD		ANACS 62		42.00		
50c	ND CLAD		UNC				366.00
50c	ND-P CLAD		ANACS 64		60.00		
50c	ND CLAD		PCGS 62		162.49		
50c	ND CLAD		PCGS 63				86.51
1\$	ND SBA		PCGS 66				406.51

## CoinFacts.com

Your Online Reference For U.S. Coins



**“The Ultimate Coin Book” by CoinFacts.com, Inc.  
Now Available on CD-Rom**

Our new CD-Rom is a mirror image of the CoinFacts website but with no download delays caused by slow Internet connections. In fact, no Internet connection is required at all, making the CoinFacts CD-Rom perfect for use in your home, office or even your portable computer at coin shows. Plop the CoinFacts CD-Rom in your PC and have immediate, lightning-fast access to the thousands of full color images and indispensable numismatic information. Please visit [CoinFacts.com](http://CoinFacts.com) for more information and to purchase.



# Off-Metal Errors

by Al Levy (alscoins.com)

1. ALL LOTS HAD BUYERS. IF THE COINS ACTUALLY CHANGED HANDS IS UNKNOWN.
2. A PICTURE ACCOMPANIED EACH LOT OR IT WAS NOT RECOGNIZED.
3. BLURRY PICTURES OR OTHER PROBLEMS ARE NOTATED UNDER "OBSERVATION".
4. ITEMS MISLABELLED COMMANDED A SMALL PREMIUM.
5. SOME LOTS CHANGED HANDS MORE THAN ONCE.
6. ANY SCRATCHES, DENTS OR DEFECTS NOTATED WERE EITHER IN THE DESCRIPTION OR GRADING SERVICES' HOLDERS.
7. AUCTION HOUSES THAT LISTED THESE ERRORS WERE IGNORED.
8. SHIPPING CHARGES ARE NOT INCLUDED.

<u>FROM 04/01/05 TO 06/30/05</u>			
<u>DESCRIPTION</u>	<u>GRADE</u>	<u>SOLD</u>	<u>OBSERVATION</u>
<b>DOUBLE DENOMINATIONS</b>			
1965 STRUCK 1c ON A STRUCK 10c	NGC 65	1,535.00	LOTS OF DETAIL SHOWS FROM 10c STRIKE. 1c DATE SHOWN.
1985 STRUCK 1c ON A STRUCK 10c	NTC 62	895.00	TWO FULL DATE PLUS FULL MINTMARK.
1986 STRUCK 1c ON A STRUCK 10c	PCGS 66	775.00	BAD PICTURE. COULD SEE SOME DETAIL FROM 10c STRIKE.
1986 STRUCK 1c ON A STRUCK 10c	PCGS 66	860.66	180 DEGREE ROTATION BETWEEN STRIKES. "1-86" CENT STRIKE. "P" OF DIME.
1986-P STRUCK 1c ON A STRUCK 10c	PCGS 66	815.00	ONE FULL DATE PLUS MINTMARK. ALMOST 180 DEGREE ROTATION BETWEEN STRIKES
1996-P STRUCK 1c ON A STRUCK 10c	PCGS 66	1,125.00	1 1 <sup>1</sup> DATES. FULL MINTMARK. "FLIPOVER". LOTS OF DETAIL
1998 STRUCK 1c ON A STRUCK 10c	GEM BU	500.00	TWO FULL DATE PLUS FULL MINTMARK ("P") see special note
1999-P STRUCK 1c ON A STRUCK 10c	PCGS 67	921.00	ONE FULL DATE PLUS MINTMARK. 150 DEGREE ROTATION BETWEEN STRIKES
199(?) -P STRUCK 1c ON A STRUCK 10c	GEM BU	710.00	NO LAST DIGIT SHOWS FOR EITHER STRIKE. MINTMARK & REST OF DATES SHOW
2001-P STRUCK 1c ON A STRUCK 10c	PCGS 67	1,272.00	TWO FULL DATE PLUS FULL MINTMARK. (HOLDER DOES NOT REFLECT MM)
<b>OFF METALS</b>			
1c/10c 1952-D	DAMAGED	256.51	FULL DATE & MINTMARK. SCRATCHED & CUT BOTH SIDES. HEAVY DAMAGE
1c/10c 1956	ANACS 58	1,125.00	FULL DATE & MINTMARK AREA.
1c/10c 1964	PCGS 53	615.00	FULL DATE & MINTMARK AREA.
1c/10c 1966	ANACS 61	260.00	LOOKED LIKE PART OF THE LAST "6" WAS MISSING.
1c/10c 1968	AU	394.00	FULL DATE & MINTMARK AREA. "SCARCE YEAR & MINT"
1c/10c 1974	NGC 64	411.54	FULL DATE & MINTMARK AREA. NICE STRIKE & LUSTER!
1c/10c 1976-D	UNC	306.51	OWNER CLAIMS IT IS STRUCK ON A TYPE I PLANCHET.

<u>DESCRIPTION</u>	<u>GRADE</u>	<u>SOLD</u>	<u>OBSERVATION</u>
1c/10c 1980-D	AU	26.26	LOOKED ORIGINAL. WENT CHEAP DUE TO THE PICTURES. SELLER - COPPER CORE. NO WEIGHT GIVEN.
1c/10c 1982 LG DT	CH BU	349.00	FULL DATE & MINTMARK AREA.
1c/10c 1990	PCGS 64	274.00	FULL DATE & MINTMARK AREA
1c/10c 1990	CH BU	300.00	FULL DATE & MINTMARK AREA
1c/10c 1993	NGC 66	316.52	WEIGHS 2.25 GRAMS. LIGHT WEIGHT!!! FULL DATE & MINTMARK AREA.
1c/10c NO DATE "BOWTIE"	BU	510.00	QUESTIONABLE? 4 CLIPS AS OPPOSED TO NORMAL 2 FOR A BOWTIE.
			COPPER CLAD OR UNPLATED? FULL CENT STRIKE??? see special note
5c/1c 1964-D	NGC 63 R&B	273.75	FULL DATE & MINTMARK. EAR AREA AROUND JEFFERSON LOOKED FLAT.
5c/1c 1964-(?)	UNC BRN	800.00	WEIGHS 3.1 GRAMS. UNIFACED REVERSE. FULLY STRUCK OBVERSE. SCRATCHED.
5c/1c 1969-D	ANACS 62 R&B	350.00	FULL DATE & MINTMARK.
5c/1c (1970)-(S)	PCGS 63	375.00	REDDISH BROWN COLOR. 1/3 DATE REMAINS. ↓ OF MINTMARK.
5c/1c 1976-D	PCGS 64 RED	293.00	FULL DATE & MINTMARK.
5c/1c 1978	AU	179.50	FULL DATE & MINTMARK AREA.
5c/1c 1978	UNC BRN	165.00	FULL DATE & MINTMARK AREA.
5c/1c 1978	ANACS 60 R&B	181.50	FULL DATE & MINTMARK AREA. (3% OFF CENTER.)
5c/1c 1978	PCGS 63 R&B	225.00	FULL DATE & MINTMARK AREA.
5c/1c 1979	BU R&B	171.49	FULL DATE & MINTMARK AREA.
5c/1c 1979	BU R&B	175.00	RIM SCRAPE FROM K3:00 TO K6:30. FULL DATE & MINTMARK AREA
5c/1c 1979	CH BU R&B	163.75	FULL DATE & MINTMARK AREA.
5c/1c (1979)	ANACS 62 R&B	188.10	MOST OF DATE REMAINS.
5c/1c 1979	ANACS 64 R&B	239.28	FULL DATE & MINTMARK AREA.
5c/1c 1979	PCI 63 BRN	177.59	FULL DATE & MINTMARK AREA.
5c/1c 1979	PCGS 63 BRN	199.95	FULL DATE & MINTMARK AREA.
5c/1c (1979)	PCGS 63 R&B	180.61	MOST OF DATE REMAINS.
5c/1c (1979)-D	UNC BRN	174.55	↓ OF DATE. FULL MINTMARK.
5c/1c 1980-P	XF	125.50	DAMAGED WITH A RUB. BROWN COLOR.
5c/1c 1980-P	AU	79.99	FULL DATE & MINTMARK AREA. COUNTINGROOM DAMAGE
5c/1c 1980-P	AU	147.50	FULL DATE & MINTMARK.
5c/1c (1980)-(P)	AU	117.50	MOST OF DATE & MINTMARK MISSING. OBVERSE SCRATCHES
5c/1c (1980)-(P)	AU	148.50	WEIGHS 3.0. OBVERSE SCRATCHES. ↓ DATE & MINTMARK SHOWS.
5c/1c (1980)-(P)	AU	150.00	VERY TOP OF DATE MISSING. FULL MINTMARK.
5c/1c (1980)-P	UNC BRN	153.50	REV DAMAGE. BROWN COLOR. ↓ OF DATE.
5c/1c 1980-P	UNC R&B	163.50	FULL DATE & MINTMARK.
5c/1c 1980-P	BU R&B	131.18	FULL DATE & MINTMARK. OBVERSE & REVERSE DAMAGE.
5c/1c 1980-P	BU R&B	205.50	FULL DATE & MINTMARK.
5c/1c 1980-P	ANACS NET 50	138.05	UNC DETAILS. COUNTING ROOM DAMAGE. FULL DATE & MINTMARK.
5c/1c (1980)-P	ANACS NET 55	114.51	ALMOST A FULL DATE. FULL MINTMARK. (DAMAGED)
5c/1c (1980)-(P)	ANACS 62 R&B	206.16	PARTIAL DATE & MINTMARK.



<u>DESCRIPTION</u>	<u>GRADE</u>	<u>SOLD</u>	<u>OBSERVATION</u>
5c/1c 1980-P	ANACS 63 R&B	211.00	FULL DATE & MINTMARK AREA.
5c/1c (1980)-(P)	ANACS 63 R&B	225.50	VERY TOP OF DATE MISSING. FULL MINTMARK.
5c/1c 1980-P	ANACS 64 RED	200.00	FULL DATE & MINTMARK AREA. see special note
5c/1c 1980-P	NGC 64 R&B	243.58	FULL DATE & MINTMARK.
5c/1c (1980)-P	PCGS 58	178.10	ALMOST FULL DATE. FULL MINTMARK.
5c/1c (1980)-P	PCGS 63 R&B	199.00	ALMOST FULL DATE. FULL MINTMARK.
5c/1c 19(80)-P	PCGS 63 RED	213.06	MOST OF DATE REMAINS.
5c/1c (1980)-P	PCI 64 R&B	183.50	ALMOST FULL DATE. FULL MINTMARK.
5c/1c (1981)-(P)	AU	155.50	EMBEDDED METAL STRUCK THRU REVERSE. 1/2 OF DATE & MM MISSING.
5c/1c (198?)-P	BU R&B	232.51	THE LAST DIGIT IN DATE UNKNOWN. WAS A "1" OR "7"
5c/1c ND COPPER	AU	67.00	MIGHT BE 1978(?) LOTS OF COUNTING ROOM DAMAGE.
5c/1c NO DATE	UNC RED	128.52	COUNTING ROOM DAMAGE. NO DATE OR MINTMARK. LOOKS COPPER.
5c/10c (1952)	NGC 58	711.51	50% OF DATE REMAINS ON THE "SILVER" DIME PLANCHET.
5c/SILVER 10c NO DATE	SEGS 50	215.50	NO PART OF DATE OR MINTMARK AREA VISIBLE
5c/10c NO DATE	AU	271.66	PART OF DATE (1966 - ?). POSSIBLY ON A FOREIGN AS NO CLAD LAYER SHOWED.
5c/10c NO DATE CLAD	ANACS 63	197.50	NO DATE OR MINTMARK.
5c/10c NO DATE CLAD	NGC 64	280.95	WEIGHS 2.2 GRAMS.
5c/10c NO DATE CLAD	PCGS 62	204.01	NO DATE OR MINTMARK SHOWS
5c/10c NO DATE CLAD	PCGS 62	235.00	WEIGHT NOT GIVEN.
25c/1c (1967)	PCGS 64 R&B	999.00	MOST OF DATE REMAINS. (HARRISON PHILLIPS COLLECTION)
25c/1c 1973-D	ANACS 60 BRN	850.01	ALMOST FULL DATE, FULL MINTMARK.
25c/5c 1964-D	PCGS 63 R&B	273.87	REDDISH BROWN COLOR. ALMOST A FULL DATE. ∟ OF MINTMARK.
25c/5c 1965	PCGS 66	250.00	VERY TOP OF DATE VISIBLE.
25c/5c (1966)	PCGS 58	179.00	∟ OF DATE SHOWS
25c/5c 1968-D	XF	96.00	COUNTING ROOM DAMAGE OBVERSE. FULL DATE & MINTMARK. 5.0 GRAMS
25c/5c (1969)-D	PCGS 65	292.78	50% OF DATE REMAINS.
25c/5c 1970-D	PCGS 58	129.01	FULL DATE & MINTMARK.
25c/5c 1972-D	NGC 66	202.02	FULL DATE & MINTMARK.
25c/5c 1972-D	PCGS 53	113.50	FULL DATE & MINTMARK.
25c/5c (1972)-D	PCGS 61	195.00	∟ OF DATE. FULL MINTMARK.
25c/25c/5c 1972-D	PCGS 64	659.00	DBL STRUCK 25c ON A 5c PLANCHET.
25c/5c 1974	NGC 62	132.50	FULL DATE & MINTMARK AREA.
25c/5c 1977	AU	78.00	FULL DATE & MINTMARK AREA
25c/5c 1977	BU	137.51	FULL DATE & MINTMARK AREA.
25c/5c 1977	ANACS 55	225.50	FULL DATE & MINTMARK AREA.
25c/5c 1977	ANACS 62	153.76	FULL DATE & MINTMARK AREA.
25c/5c 1977	ANACS 62	190.27	FULL DATE & MINTMARK AREA.
25c/5c 1977	ANACS 64	234.51	FULL DATE & MINTMARK AREA.
25c/5c 1978	PCGS 58	154.29	FULL DATE & MINTMARK AREA.
25c/5c (1979)	ANACS 63	177.50	3/4 DATE & MINTMARK AREA.
25c/5c (1979)	ANACS 64	177.77	MOST OF DATE MISSING
25c/5c 1981-P	CH BU	146.00	FULL DATE & MINTMARK.
25c/5c 1981-P	GEM BU	169.50	FULL DATE & MINTMARK.

<u>DESCRIPTION</u>	<u>GRADE</u>	<u>SOLD</u>	<u>OBSERVATION</u>
25c/5c 1982-P	NGC 63	153.51	FULL DATE & MINTMARK.
25c/5c 1988-P	CH BU	177.50	MINOR PART OF "19" MISSING.
25c/5c 1995-D	GEM BU	177.52	FULL DATE & MINTMARK.
25c/5c 1998-D	BU	202.50	FULL DATE & MINTMARK. WEIGHS 5.0 GRAMS
25c/5c DE 1999-D	PCGS 55	540.00	FULL DATE & MINTMARK.
25c/5c GA 1999-P	BU	1,500.00	FULL DATE & MINTMARK. WEIGHS 5.0 GRAMS
25c/10c NO DATE SILVER "D"	GEM BU	385.00	90% SILVER "DENVER". NO DATE.
50c/\$1 SBA (1979)	UNC	935.00	MOST OF DATE REMAINS.
\$1 SBA/1c 1979-S	BU RED	3,552.52	FULL DATE & MINTMARK AREA.
1c/PHILIPPINE 5 SEN 1972-D	PCGS 63	191.51	FULL DATE & MINTMARK.
1c/FOREIGN PLANCHET 2000-D	ANACS 64 RED	105.70	STRUCK ON A MALAYSIAN PLANCHET???
5c/CUBA 1c NO DATE	NGC 58	400.00	COULD BE A 1978 OR 1979. WEIGHS 2.5 GRAMS.
PHILIPPINE 5 SEN/US 1c 1967	PCGS 63 RED	175.00	FULL DATE. NICE COLOR
PHILIPPINE 5 SEN/US 1c 1970	PCGS 63 RED	103.50	NO WEIGHTS GIVEN.
PHILIPPINE 25 SEN/US 5c 1970	PCGS 64	153.50	NO WEIGHTS GIVEN.
OFF STOCK			
<u>DESCRIPTION</u>			
1c/THICK PLANCHET 1944	UNC BRN	228.50	POLLACK LISTS THIS AS EXPERIMENTAL. LISTED AS ETHIOPIAN. TOO HEAVY. 64.2 GRAINS/4.16 GRAMS.
1c/THICK PLANCHET 1964-D	PCGS 63 RED	125.00	WEIGHS 61.5 GRAMS.
25c 1964 STRUCK ON 10c STOCK	ICG 45	99.99	90% SILVER. NO WEIGHT GIVEN.
25c 1964 STRUCK ON A THICK PLANCHET	XF	36.00	WEIGHS 5.2 GRAMS.
25c 1967 STRUCK ON 10c STOCK	PCGS 45	95.00	WEIGHS 4.3 GRAMS.
25c 1969-D STRUCK ON 10c STOCK	PCGS 40	56.01	NO WEIGHT GIVEN. MINTMARK NOT ON HOLDER
25c 1970-D STRUCK ON 10c STOCK	XF	16.50	WEIGHS 4.2 GRAMS.
25c 1970-D STRUCK ON 10c STOCK	XF	18.50	WEIGHS 4.2 GRAMS.
25c 1970-D STRUCK ON 10c STOCK	AU	22.46	REVERSE SCRATCHES
25c 1970-D STRUCK ON 10c STOCK	AU	26.25	USUAL LOOK.
25c 1970-D STRUCK ON 10c STOCK	AU	36.99	WEIGHS 4.24 GRAMS.
25c 1970-D STRUCK ON 10c STOCK	AU	47.00	MISIDENTIFIED AS STRUCK ON A DIME.
25c 1970-D STRUCK ON 10c STOCK	AU	86.09	MISIDENTIFIED AS STRUCK ON A DIME.
25c 1970-D STRUCK ON 10c STOCK	UNC	29.99	NO WEIGHT GIVEN.
25c 1970-D STRUCK ON 10c STOCK	UNC	36.03	NO WEIGHT GIVEN.
25c 1970-D STRUCK ON 10c STOCK	UNC	81.00	NO WEIGHT GIVEN.
25c 1970-D STRUCK ON 10c STOCK	BU	19.08	WEIGHS 4.28 GRAMS.
25c 1970-D STRUCK ON 10c STOCK	CH BU	32.08	NO WEIGHT GIVEN. NICE STRIKE.
25c 1970-D STRUCK ON 10c STOCK	ANACS NET 40	30.23	AU DETAIL, REVERSE SCRATCHED
25c 1970-D STRUCK ON 10c STOCK	ANACS 55	31.99	NO WEIGHT GIVEN.
25c 1970-D STRUCK ON 10c STOCK	ANACS 58	99.95	NICE STRIKE. COULD BE UNDERGRADED.
25c 1970-D STRUCK ON 10c STOCK	ANACS 62	75.00	NO WEIGHT GIVEN.
25c 1970-D STRUCK ON 10c STOCK	PCGS 58	49.58	NO WEIGHT GIVEN.
25c 1970-D STRUCK ON 10c STOCK	PCGS 58	138.50	NO WEIGHT GIVEN.
25c 1981-P STRUCK ON ???	AU	18.07	WEIGHS 4.76 GRAMS. TOO LIGHT FOR NICKEL, TOO HEAVY FOR DIME STOCK.
50c 1963 STRUCK ON 25c STOCK	ANACS 61	305.00	WEAKLY STRUCK ON OUTER RIM. NO WEIGHTS GIVEN.
50c 1971-D STRUCK ON 25c THICKNESS STOCK	NGC 62	137.50	WEIGHS 8.8 GRAMS. (NOTE: THICKNESS!!!)

# Clad Layer Split Off Errors

by Al Levy (alcoins.com)

1. ALL LOTS HAD BUYERS. IF THE COINS ACTUALLY CHANGED HANDS IS UNKNOWN.
2. A PICTURE ACCOMPANIED EACH LOT OR IT WAS NOT RECOGNIZED.
3. BLURRY PICTURES OR OTHER PROBLEMS ARE NOTATED UNDER "OBSERVATION".
4. ITEMS MISLABELLED COMMANDED A SMALL PREMIUM.
5. SOME LOTS CHANGED HANDS MORE THAN ONCE.
6. ANY SCRATCHES, DENTS OR DEFECTS NOTATED WERE EITHER IN THE DESCRIPTION OR GRADING SERVICES' HOLDERS.
7. AUCTION HOUSES THAT LISTED THESE ERRORS WERE IGNORED.
8. SHIPPING CHARGES ARE NOT INCLUDED.

<b>FROM 04/01/05 TO 06/30/05</b>			
<b>DESCRIPTION</b>	<b>GRADE</b>	<b>SOLD</b>	<b>OBSERVATION</b>
10c 1967 OBVERSE	UNC	17.02	BROWNISH COLOR. ENVIRONMETAL DAMAGE ON OBVERSE EDGE
10c 1969-D REVERSE (90%)	BU	29.00	BROWN COLOR. 90% MISSING CLAD LAYER.
10c 1994-D REVERSE	ANACS 65	57.99	RED COLOR
10c 1998-P REVERSE	BU	45.00	BROWN COLOR
10c 2000-D OBVERSE	BU	49.01	REDDISH BROWN COLOR
10c 2001-D REVERSE	ANACS 62	59.00	RED COLOR
10c 2003-D OBVERSE	CH BU	46.55	RED COLOR
25c 1967 OBVERSE	AU	36.99	BROWN COLOR
25c 1967 OBVERSE	AU	80.99	REDDISH BROWN COLOR
25c 1967 OBVERSE	BU	95.00	BROWN COLOR
25c 1968-D OBVERSE	CH BU	67.00	REDDISH BROWN COLOR
25c 1972-D REVERSE	ANACS 58	46.00	BROWN COLOR
25c 1973 REVERSE	PCGS 64	131.50	RED COLOR
25c 1979 OBVERSE 50% SPLIT OFF	ANACS 58	42.33	ANACS CALLS IT "MISSING CLAD LAYER LAMINATION"
25c 1979-D OBVERSE	PCGS 63	75.00	RED COLOR
25c 1980-P OBVERSE	AU	47.99	RED COLOR
25c 1997-D REVERSE	CH BU	79.00	BROWN COLOR
25c 1998-D OBVERSE	NGC 65	90.00	BROWN COLOR
25c AK 2003-P REVERSE	ANACS 64	537.89	REDDISH BROWN COLOR
25c CA 2005-D REVERSE	BU	577.89	REDDISH BROWN COLOR
25c CA 2005-P OBVERSE	CH BU	499.00	BRIGHT RED. WEIGHS 4.7 GRAMS.
25c CT 1999-D OBVERSE	AU	76.00	REDDISH BROWN COLOR
25c CT 1999-P OBVERSE	PCGS 63	153.50	REDDISH BROWN COLOR
25c GA 1999-D REVERSE	PCGS 55	232.50	REDDISH BROWN COLOR BUT SPOTTED. LOOKS CLEANED?
25c IA 2004-D REVERSE	UNC	444.00	OBV & REV DAMAGE. 90% CLAD LAYER OFF. RED COLOR.
25c IN 2002-P REVERSE	CH BU	361.00	RED COLOR
25c MA 2000-D OBVERSE	NGC 65	281.01	RED COLOR
25c MA 2000-P OBVERSE	PCGS 64	204.03	REDDISH BROWN COLOR
25c MA 2000-D OBVERSE	PCI 63	51.00	OBVERSE LOOKED MORE LIKE COPPER WASH. NO WEIGH GIVEN. EMAIL UNANSWERED.
25c MA 2000-D REVERSE	BU	300.13	REDDISH BROWN COLOR
25c MD 2000-D REVERSE	PCGS 63	289.00	REDDISH BROWN COLOR
25c MD 2000-P OBVERSE	XF	99.00	BROWN COLOR (CLEANED)
25c MD 2000-P REVERSE	GEM BU	157.50	YELLOWISH BROWN COLOR. LOOKED LIKE A FULL STRIKE. NO WEIGHT GIVEN. NO ANSWERS TO EMAILS.

# Clad Layer Split Off Errors

DESCRIPTION	GRADE	SOLD	OBSERVATION
25c ME 2003-D REVERSE	AU	405.00	REDDISH BROWN COLOR
25c MN 2005-P REVERSE	GEM BU	834.99	RED COLOR
25c MN 2005-P REVERSE	NGC 65	536.00	RED COLOR
25c MS 2002-D OBVERSE	AU	204.50	BROWN COLOR
25c NC 2001-P REVERSE	AU	69.99	BAD PICTURE. PROBABLY WHY THE COIN SO CHEAP! COLOR LOOKED DARK BROWN.
25c NC 2001-D REVERSE	NGC 64	430.00	REDDISH BROWN COLOR
25c NH 2000-D REVERSE	PCGS 62	150.00	REDDISH BROWN COLOR. REVERSE FINGERPRINT
25c NY 2001-D REVERSE	PCGS 55	475.00	RED COLOR. LOTS OF SCUFF MARKS.
25c RI 2001-D OBVERSE	BU	160.39	BROWN COLOR
25c RI 2001-D REVERSE	NGC 65	565.55	BRIGHT RED
25c SC 2000-D OBVERSE	UNC	207.50	REDDISH BROWN COLOR
25c VA 2000-D 40% OBVERSE	PCGS 58	338.33	40% OF OBVERSE CLAD LAYER OFF. REDDISH BROWN COLOR.
\$1 SBA 1979-S OBVERSE	ANACS 60	305.01	REDDISH BROWN COLOR

# eureka trading systems



# eureka trading . com



## NORTHEAST NUMISMATICS INC. RARE COINS · PERSONAL SERVICE

Northeast Numismatics  
10 Concord Crossing, Ste. 220  
Concord, MA 01742  
800-449-2646  
www.northeastcoin.com

Northeast Numismatics has an impressive inventory of over 1,200 U.S. and foreign coins. We have a strong selection of mint errors, both U.S. and foreign. And we carry every area of United States coinage from colonials through rare gold including type, commemoratives, silver dollars and much, in addition to our extensive inventory of world coins.

High quality "fresh" coins are what we are known for and take pleasure in offering. We constantly are hearing from our customers about our excellent prices and high customer service. 2003 is our 39th year of business, so order with complete confidence. Also, please keep in mind that we are always buying coins of all kinds, certified and uncertified, to fill our want lists.



# Buffalo Nickel “Speared Bison” & Wisconsin Quarter Extra Leaves

---

by Al Levy (alscoins.com)

PLEASE NOTE: THE ERROR TYPES LISTED BELOW WERE EBAY LOTS THAT CLOSED WITH A HIGH BIDDER. IF THE RESERVE PRICE WAS NOT MET, OR PICTURE WAS NOT ATTACHED, THEN I IGNORED THE AUCTION. FUZZY PICTURES, OR QUESTIONABLE DESCRIPTIONS ARE NOT INCLUDED.

AN IMPORTANT OBSERVATION IS THAT THE BUFFALO 5c “SPEARED BISON” & THE “WISCONSIN” 25c EXTRA LEAFS ARE EBAY ITEMS ONLY. NO DEALERS I SPOKE TO AT SHOWS OR LOCALLY SOLD AN OF THESE ITEMS. NOR WERE THERE ANY CALLS FOR THEM. SELLERS ONLY.

<u>SPEARED BISON” 2005-D - DIE GOUGE THROUGH THE CENTER OF THE BISON ON REVERSE:</u>		
	QUANTITY	AVERAGE
GRADE	<u>SOLD</u>	<u>PRICE</u>
ACC 63	1	87.00
ANACS 64	14	136.94
ANACS 65	31	164.16
NGC 63	4	122.13
NGC 64	6	189.72
NGC 65	4	290.88
PCGS 63	3	119.02
PCGS 64	14	198.03
PCGS 65	4	425.72
PCGS 66	2	1,489.50
UNC - COUNTING ROOM DAMAGE	1	66.66
UNCERTIFIED	71	99.86

## Buffalo Nickel “Speared Bison” & Wisconsin Quarter Extra Leaves

<u>WISCONSIN 2004-D:</u>		
HIGH LEAF	QUANTITY	AVERAGE
<u>GRADE</u>	<u>SOLD</u>	<u>PRICE</u>
CIRCULATED	9	109.23
UNCERTIFIED	63	141.25
ACC 65	1	132.50
ANACS 65	1	212.50
ANACS 66	1	295.00
ICG 60	1	105.50
ICG 63	1	122.50
NGC 58	2	159.63
NGC 62	1	148.05
NGC 65	3	254.72
NGC 66	3	338.16
PCGS 64	2	215.00
PCGS 65	2	225.00
PCGS 66	1	380.00
LOW LEAF	QUANTITY	AVERAGE
<u>GRADE</u>	<u>SOLD</u>	<u>PRICE</u>
CIRCULATED	13	80.72
UNCERTIFIED	137	98.17
ACC 63	1	92.76
ACGC 69	1	202.50
ANACS 65	1	158.51
ICG 61	1	121.99
ICG 64	2	95.26
ICG 65	2	336.25
NGC 58	1	102.50
NGC 63	1	137.51
NGC 64	2	141.01
NGC 65	6	193.07
NGC 66	4	277.83
NGC 66 PL	1	505.00
PCGS 64	13	141.25
PCGS 65	1	198.26
PGS 67	1	88.75

# Buffalo Nickel "Speared Bison" & Wisconsin Quarter Extra Leaves

<u>SETS SOLD</u>		<u>AVERAGE</u>	
	<u>GRADE</u>	<u>PRICE</u>	<u>ADDITIONAL INFORMATION</u>
7 COIN SET - LOW, HIGH, NORMAL, FAT	UNCERTIFIED	226.56	INCLUDES TWO BISON MINOR ERRORS & CALIFORNIA MINOR ERROR
6 COIN SET - LOW, HIGH, NORMAL ("P" + "D")	NGC	879.00	BOTH "P" & "D", NON ERROR (MS65) & (3) PRF 69 SILVER PROOF
3 COIN SET - LOW, HIGH, PROOF STRUCK THRU	NGC	305.01	HIGH = 64, LOW = 65, PROOF = 67 HEAVY CAMEO
5 COIN SET - LOW, HIGH, NORMAL ("P" + "D")	UNCERTIFIED	281.00	BOTH "P" & "D" & SILVER PROOF
5 COIN SET - LOW, HIGH, NORMAL ("P" + "D")	UNCERTIFIED	280.00	BOTH "P" & "D" & FAT LEAF
4 COIN SET - LOW, HIGH, NORMAL, NORMAL	UNCERTIFIED	420.00	
3 COIN SET - LOW, HIGH, NORMAL	UNCERTIFIED	285.44	
2 COIN SET - LOW, NORMAL	UNCERTIFIED	115.50	
3 COIN SET - LOW, NORMAL	NGS 58	138.38	NGS 64 NON-ERROR SLAB.
3 COIN SET - LOW, HIGH, NORMAL	ANACS	360.00	EXTRA LEAF HIGH GRADED 64. OTHER TWO GRADED 65
3 COIN SET - LOW, HIGH, NORMAL	ANACS 66	469.94	THE NON-ERROR COIN WAS GRADED MS 65
3 COIN SET - LOW, HIGH, NORMAL	ANACS 66	401.99	
3 COIN SET - LOW, HIGH, NORMAL	APPRAISALS 68	365.00	NEW GRADING SERVICE?????
3 COIN SET - LOW, HIGH, PROOF	NGC/ANACS	400.00	HIGH/LOW NGC 64, ANACS PF 68 CAMEO
3 COIN SET - LOW, HIGH, PROOF + ROLL	NGC	501.00	MS 64 REGULAR/HIGH, LOW MS 64. ROLL HAS LOW LEAF. (3 ERRORS)
3 COIN SET - LOW, HIGH, NORMAL	NGC 65	466.00	
3 COIN SET - LOW, HIGH, NORMAL	NGC 66	464.85	EXTRA LEAF LOW GRADED MS 65
3 COIN SET - LOW, HIGH, NORMAL	NGC 66	548.91	
3 COIN SET - LOW, HIGH, NORMAL	NGC 67	1,077.28	
4 COIN SET - LOW, HIGH, NORMAL	PCGS 64	370.00	
3 COIN SET - LOW, HIGH	ANACS 65	300.65	
2 COIN SET - LOW, HIGH	NGC 64	395.00	
2 COIN SET - LOW, HIGH	PCGS 64	425.00	
2 COIN SET - LOW, HIGH	PCGS 65	495.00	
3 COIN SET - LOW, HIGH	CIRCULATED	152.50	
2 COIN SET - LOW, HIGH	UNCERTIFIED	246.83	
2 COIN SET - LOW, HIGH	ANACS 66	406.00	
2 COIN SET - LOW, HIGH	ICG 65	375.00	
2 COIN SET - LOW, HIGH	PCI 65	330.00	
2 COIN SET - LOW, HIGH	PCGS	510.01	HIGH LEAF GRADED 65. LOW LEAF GRADED 65
2 COIN SET - LOW, HIGH	PCGS	700.00	HIGH LEAF GRADED 65. LOW LEAF GRADED 66
2 COIN SET - LOW, HIGH	PCGS	836.88	HIGH LEAF GRADED 66. LOW LEAF GRADED 65
3 COIN SET - LOW, NORMAL	UNCERTIFIED	102.50	
DOWN/LOW LEAF END OF ROLL	ROLL	451.49	
DOWN/HIGH LEAF END OF ROLL	ROLL	281.75	
TWO ROLL SET WITH LOW/HIGH LEAF	ROLS	711.99	HIGH LEAF IN ONE ROLL. LOW LEAF IN OTHER ROLL.

# 1989-D Lincoln Cent Transitional Double Struck on Bronze Planchet

by Mike Byers (mikebyers.com)

This is a unique transitional major mint error. In 1989 the Denver Mint struck this Lincoln Cent on a pre-1983 copper Cent blank. The weight is 3.10 grams. It is a transitional since it should be on a copper-zinc blank planchet. This transitional is unique and a discovery coin. It was double struck in the collar and rotated between the strikes. This is one of the coolest mint errors I have ever handled.





# 1989-D Lincoln Cent Struck on Bronze Planchet

In 1989 the Denver Mint struck this Lincoln Cent on a pre-1983 copper Cent blank. It is a transitional since it should be on a copper-zinc blank planchet. There are three known transitionals of this type.



# 1990-D Lincoln Cent Struck on Bronze Planchet

In 1990 the Denver Mint struck this Lincoln Cent on a pre-1983 copper Cent blank. It is a transitional since it should be on a copper-zinc blank planchet. There are three known transitionals of this type.





# 1974-D Ike Dollar

## Struck on 40% Silver-Clad Planchet

This TRANSITIONAL mint error was struck on a silver-clad blank instead of a clad blank. The silver-clad coinage was struck at the San Francisco Mint. This TRANSITIONAL is from the Denver Mint.



# 1977-D Kennedy Half Dollar Struck on a 40% Silver Planchet

This is a rare Kennedy Half transitional major mint error. It was struck on a silver blank planchet instead of clad.





# 1944-P Jefferson Wartime Nickel Transitional Mint Error

This is a 1944-P Jefferson Wartime Nickel transitional mint error. It was struck on a copper-nickel planchet rather than the intended Wartime silver alloy planchet, which did not have nickel composition. The composition should have been silver, manganese and copper. In 1942 the composition of the nickel was changed so that the nickel alloy could be used in the materials produced for the War.

Since this composition was changed by the United States Mint in 1942 and continued through 1945, this left the possibility of several transitional mint errors to occur. There is reportedly a unique 1942 pre-Wartime Nickel struck on a silver Wartime composition planchet and several Wartime nickels struck on nickel composition planchets prior to this change.

What makes this Wartime Transitional so exciting is the date - 1944, two years later than the change over in 1942. There is one other 1944-P Jefferson Wartime

Nickel TRANSITIONAL that was recently featured on Coin World Online and in the July 2, 2001 Issue.

This Transitional was authenticated and encapsulated by PCGS and was graded a conservative VF-25. This Wartime Nickel Transitional is actually rarer than a 1943 COPPER CENT. Several of the 1943 copper cents have sold in the \$75,000 to \$200,000 range.



# 1838 Gobrecht Struck Over 1859 Dollar

by Saul Teichman (uspatterns.com)

The illustrated piece is the example of J84/P93 which is mentioned in Breen's Encyclopedia #5418 as being struck over an 1859 dollar. It was struck in die alignment III.

It is described, by Breen, as being ex Louis Werner, circa 1958, A.M. Kagin and was just sent to Heritage under consignment.

As shown in the picture below, the 59 from the host coins original date is clearly visible to the right of the second 8 of the overtype.

It is one of several overstrikes produced circa 1859-60 which an example of an J67/P70 overstruck over an 1859 gold dollar and the famous 1851 restrike dollar overstruck on what is believed to be an 1859-O dollar to name just a few.

It is regrettable that the coin is toned as it hides additional undertype. Mark Van Winkle of Heritage mentions "I noticed traces of the undertype was on ONE DOLLAR on the lower reverse, especially on the D".

Hopefully the coin will receive more thorough study now that it has been reintroduced to the collecting fraternity.



Photos courtesy of Heritage



# Double Struck Gold Staters of Brutus

by Harlan J. Berk

*Editor's Note: A small group of double struck gold staters were discovered in this hoard. I personally sorted through two groups of staters from this hoard which were owned by two of the largest numismatic dealers who dealt in ancient coins. Fortunately there were a group which were double and triple struck. The double struck stater pictured in this article is dramatic and is in choice mint state condition.*



Recently a group of Phosthumus Lysimachus gold staters came into the market. They were minted in Callatis, Tomis and Istrus. Those from Istrus were previously thought to be issues of Mithradates VI of Pontus as the unusual portrait bore a resemblance to him. With the discovery of this hoard other coins of Istrus came to light proving them all to be portraits of the deified Alexander the Great. Within the hoard were coins of Asander from the 40's BC some 20 years after Mithradates and no coins of Mithradates at all were found. Could the coins be issues of Asander? No! He never controlled the three cities where the coins were minted. If not Mithradates or Asander, then who?

Enter Brutus! At this time and place Brutus and Cassius were in the Roman Civil War pitted against Marc Anthony and Octavian, (later Augustus). It was Brutus, assassin of Caesar

who controlled the three mint cities. If he didn't have enough gold he had a local source. The widow Polemocratia came to Brutus to save her assassinated husband's kingdom for her son, which Brutus did. To reward him, Polemocratia gave Brutus a massive gold treasure. A treasure Brutus had an immediate need for. He had to pay the numerous Thracian mercenaries within his legions. Soldiers in those times were illiterate and payment had to come in a coinage from they were accustomed to. In this case it was the gold stater type that was originated by Lysimachus (335-281 BC) that bore a portrait of the deified Alexander on the obverse and a seated Athena on the reverse. The legend read "King Lysimachus." This is the coinage Brutus had to produce and that he did. An amazing combination; a coin bearing the portrait of Alexander the Great to defend the assassin of Julius Caesar; Marcus Junius Brutus.

# Double Struck Greek Gold Stater



**T**his double struck Greek Gold Stater of Mithradates VI is over 2000 years old and is in choice Mint State condition. The portrait is in very high relief and there is original Mint luster on both sides. It is double struck on both sides with a 10% rotation. A spectacular Mint Error.

Thrace, Pontic Kings 120-63 BC Gold Stater. 8.4 grams. Struck for the first Mithradatic War, 88-86 BC. The obverse depicts the diademed head of the deified Alexander the Great, wearing the horn of Ammon. The reverse depicts Athena holding Nike in an extended right hand.



# Silver Dollar Errors

by Patrick Glassford

Silver Dollar errors such as these are quite scarce and extremely valuable.



## Partial Collar with Railroad Rim

1965 Blunt 5 Small Beads - Cameo devices and mirror like fields.



## Multiple Strike and Partial Collar with Railroad Rim

1967 Commemorative - Mirror like fields.  
Appears to have been struck more than 4 times.



## Massive Multiple Broadstrikes

1965 Pointed 5 Small Beads - Cameo devices and mirror like fields.  
Appears to have been struck more than 2 times.



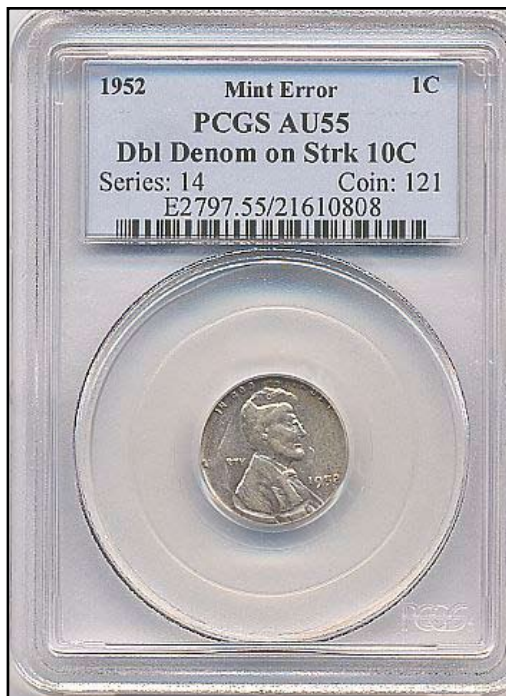
Multiple Error - 30% Off Centre with an Indent by Planchet

No Date (1965-1966 Small Beads Obverse Type)

# 1952 Lincoln Cent

## Double Denomination on Struck Dime

Although there are many clad 11¢ pieces, there are only a few known silver 11¢ pieces. This is one of the earliest dated Lincoln Cent double denominations with considerable detail of both strikes on both sides.





# Unique 1860 \$5 Clark Gruber Reverse Die Trial

This is a spectacular reverse die trial from Clark Gruber and Co., the most respected and well known financial and banking company in the pioneer and Gold Rush days in Colorado. Clark Gruber and Co. opened a bank and mint in 1860 and became coiners, striking their own gold coins of proper weight. The denominations struck were \$2 1/2, \$5, \$10 and \$20's. These pieces were accepted as currency since Clark Gruber and Co. was a well known private minting firm with an excellent reputation. This uniface die trial is a fascinating piece of Gold Rush history.



## New Contact Information:

### MIKE BYERS

P.O. Box 5090, San Clemente, CA USA 92674

Office: 949-276-7072 · Fax: 949-276-7073

Fed Ex Address only: 1001 Avenida Pico #C 612, San Clemente, CA USA 92673

Web Site: [mikebyers.com](http://mikebyers.com) · e-mail: [mike@mikebyers.com](mailto:mike@mikebyers.com)

# BYERS NUMISMATIC CORP

## MIKEBYERS.COM



The Largest Dealer of the World's Rarest Mint Errors™  
U.S. & WORLD MAJOR MINT ERRORS • DIE TRIALS • NUMISMATIC RARITIES

### BUYING & SELLING

#### MAJOR U.S. MINT ERRORS

- ANACS, PCGS, NGC, ICG, SEGS & RAW
- U.S. 1¢ THRU \$50 ERRORS
- 19TH AND 20TH CENTURY TYPE COINS:  
**ALL DENOMINATIONS**
- MODERN COINS: STATES QUARTERS, KENNEDY HALVES, IKE, SBA AND SACAGAWEA DOLLARS
- MAJOR AND DRAMATIC ERRORS FROM \$500 TO \$100,000
- DIE TRIALS, HUB TRIALS, SPLASHERS, UNIFACE AND OFF-METAL STRIKES

#### U.S. CURRENCY ERRORS

- ESPECIALLY ERRORS ON \$2, \$50, \$100 & \$500 NOTES
- DRAMATIC AND UNIQUE PRINTING & CUTTING ERRORS FROM \$500 TO \$10,000
- DOUBLE DENOMINATIONS, MULTIPLE IMPRESSIONS & MULTIPLE ERRORS
- LARGE SIZE NOTE ERRORS

#### WORLD GOLD & SILVER ERRORS

- ANACS, PCGS, NGC, ICG & RAW
- ALL DENOMINATIONS FOR MAJOR WORLD COUNTRIES
- ESPECIALLY SWISS, GERMAN, ENGLISH, FRENCH, CANADIAN & MEXICAN
- ALL 12 COUNTRIES IN THE EUROPEAN MONETARY UNION (EUROS)
- ALL COUNTRIES IN THE BRITISH COMMONWEALTH
- MEDIEVAL THRU MODERN
- MAJOR AND DRAMATIC ERRORS FROM \$500 TO \$50,000
- DIE TRIALS, SPLASHERS, UNIFACE AND OFF-METAL STRIKES

#### ANCIENT ERRORS

- ANACS, ICG & RAW
- ALL GOLD DENOMINATIONS
- 500 BC TO 950 AD
- GREEK, ROMAN AND BYZANTINE COINAGE
- MAJOR AND DRAMATIC ERRORS FROM \$500 TO \$10,000

## MIKE BYERS

P.O. Box 5090, San Clemente, CA USA 92674  
Office: 949-276-7072 • Fax: 949-276-7073

Fed Ex Address only: 1001 Avenida Pico #C 612, San Clemente, CA 92673  
E-Mail: [mike@mikebyers.com](mailto:mike@mikebyers.com) • Website Design: [sam@mikebyers.com](mailto:sam@mikebyers.com)

Mike Byers, Professional Numismatist since 1978

Byers Numismatic Corp. A California Corporation Since 1980

Mike Byers is a consultant to ANACS for Mint Errors





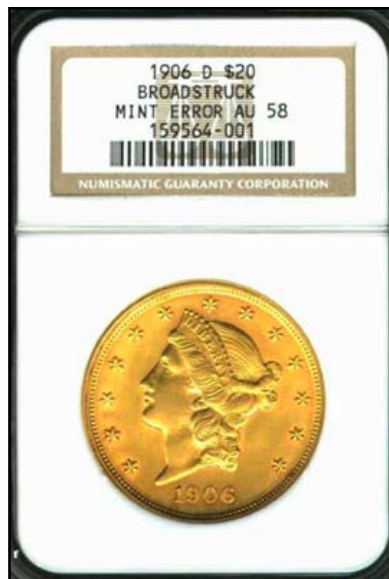
# 1912 \$2½ Indian Gold Struck 10% Off-Center

This 1912 \$2½ Indian gold piece was struck 10% off-center. Gold mint errors are rare if they are struck more than 5% off-center.



# 1906-D \$20 Liberty Gold Broadstruck

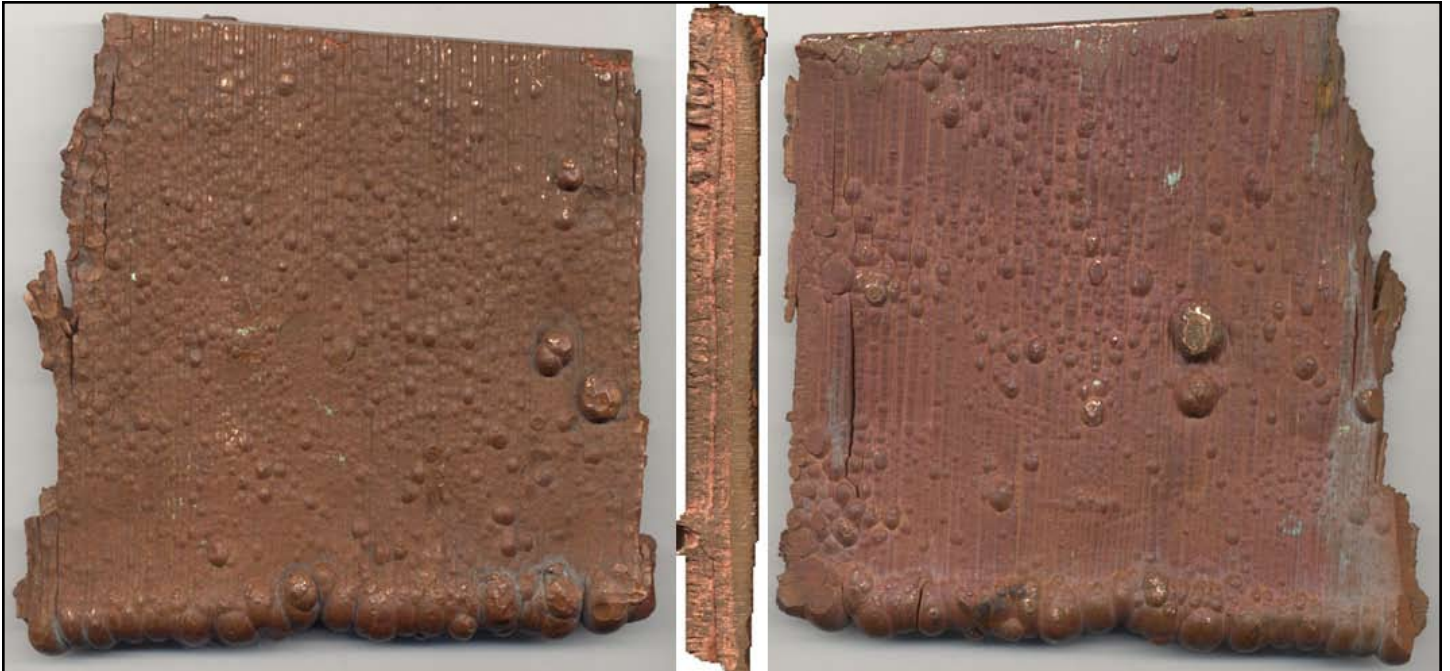
All major errors on U.S. Gold coins are very scarce, especially on the larger denominations. Although it is difficult to see the error since this coin is in the NGC holder, it is broadstruck out of the collar and does not have any reeding.





# Copper Ingot

- From the Fred Weinberg Collection -



This is a portion of a raw copper ingot which is approximately 5 1/2 inches by 5 1/2 inches, a half inch thick and weighs 4 3/4 lbs.

This ingot would have been melted, refined and eventually rolled into copper planchet strips. Blank cent planchets used by the United States Mint would eventually have been punched out of these strips.

Fred Weinberg has had this copper ingot in his personal collection for over 25 years. He purchased it at the same time that he bought a group of copper and clad punched strips. It is the only copper ingot that he has ever seen prior to being refined and rolled into planchet strips.

Today's copper strips consist of a different composition of copper and zinc. Prior to 1982, the copper strips used in the production of cent blanks were 95% copper, 5% tin and zinc. This copper ingot may be the only one available and is being offered for the first time in 25 years!



# BYERS NUMISMATIC CORP



## MIKEBYERS.COM



### The Largest Dealer of the World's Rarest Mint Errors™

U.S. & WORLD MAJOR MINT ERRORS • DIE TRIALS • NUMISMATIC RARITIES



Unique SPECIMEN Silver Certificate Set of 16  
PCGS Certified



1920 SL 25¢  
Struck on Peru 20C Planchet  
NGC MS 60 FH Unique



1838 \$5 Die Trial Splasher  
J-A1838-6  
PCGS MS 65 UNIQUE



Unique 1866 \$2½ Struck on a 3 Cent Nickel Planchet  
NGC MS 66



Pair of Indian Head 1¢ Die Caps  
Obverse & Reverse  
PCGS MS 64



Barber Half  
Full Obverse Brockage  
PCGS AU 58 UNIQUE



Unique Set of Four Paraguay Gold Overstrikes  
NGC Certified



1921-S Morgan Dollar  
Struck 45% Off-Center  
NGC MS 63



1895-O Barber Dime  
Obverse Die Cap  
PCGS MS 64



1846 J-110A \$5 Obv Die Trial  
Struck on \$2½ Trial  
NGC MS 65 BN



1924 SL 25¢  
Double Struck  
ANACS AU 55



1862 Indian Head 1¢  
Deep Obverse Die Cap  
PCGS MS 62



Unique Set of Three Paraguay Gold Overstrikes  
NGC Certified



1887 \$3 Indian Gold Proof  
Triple Struck  
PCGS PR 63



1942 Walking Liberty 50¢  
Struck on Silver 25¢ Planchet  
PCGS MS 65



Unique Jefferson Nickel  
Die Trial  
PCGS Certified



1802/1 \$5 Draped Bust Gold  
Triple Struck Obverse  
ANACS EF 45



1865 2¢  
Deep Obverse Die Cap & Brockage



1804 \$2½ Capped Bust To Right  
Double Struck  
NGC Fine 15



1898 Barber 25¢  
Obverse Die Cap & Brockage  
PCGS MS 62



1945-S WL 50¢  
Struck on El Salvador 25¢ Planchet  
NGC MS 63 UNIQUE



1806 \$5 Capped Bust Triple Struck  
Rotated 90°  
PCGS AU 50



1865 \$1 Indian Gold Proof  
Triple Struck Reverse  
PCGS PR 64 Cameo



1920 Buffalo Nickel  
Struck on Copper Planchet  
NGC AU 55 UNIQUE



1874 \$1 U.S. Gold T3  
Full Brockage  
PCGS MS 62 UNIQUE



1873 \$20 Closed 3 J-1344  
Double Struck  
NGC PF 61 RB



1901/0-S \$5 Liberty Gold  
10% Off-Center  
PCGS AU 55



1853 U.S. Assay Gold \$20  
Double Struck  
NGC AU 55



1965 English Penny  
Struck on Gold Planchet  
PCGS MS 62



1875-CC \$20 Liberty Gold  
Partial Collar  
NGC MS 62



Pair of Barber Dime Die Caps  
Obverse & Reverse  
PCGS AU 55 UNIQUE



Franklin Half Dollar  
Struck on 1948 Cent  
NGC MS 64 BN



1910 Lincoln Cent  
Uniface Test Strike  
PCGS AU 58



1904 \$20 Gold  
Double Struck  
ANACS MS 60 Proof-Like



Indian Cent on Half Dime Planchet  
Uniface Obverse  
PCGS MS 63



1851 3¢ Obverse & Reverse  
Die Trials  
Struck on Cardboard



1864 2¢ Obverse Die Cap  
Mated With Brockage  
PCGS MS 62



Martha Washington Dollar Test Piece  
Clad Plan w/Exp Edge  
NGC MS 64



1869 Indian Cent  
Struck on Silver Dime Planchet  
PCGS AU 55



1856 Large Cent Obverse Cap/  
Brockage Reverse  
Gem BU



Martha Washington Dollar Test Piece  
Sac Plan w/Exp Edge  
NGC MS 64



1906-D \$20 Liberty Gold  
Broadstruck  
NGC AU 58



# Unique Pair of 1825 English Gold Sovereign Die Trials Obverse & Reverse Uniface Pattern Strikes

by Tim Bullard (errorcointrader.com)

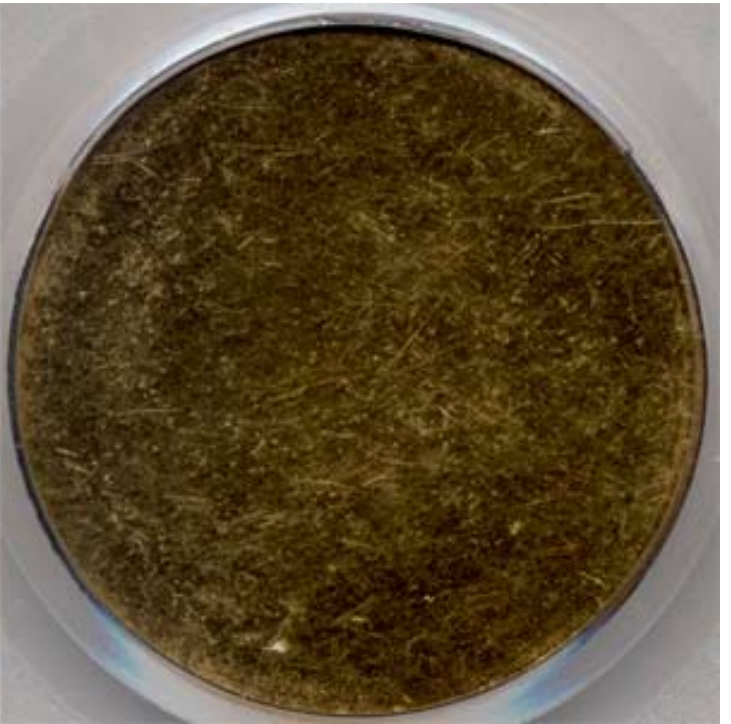
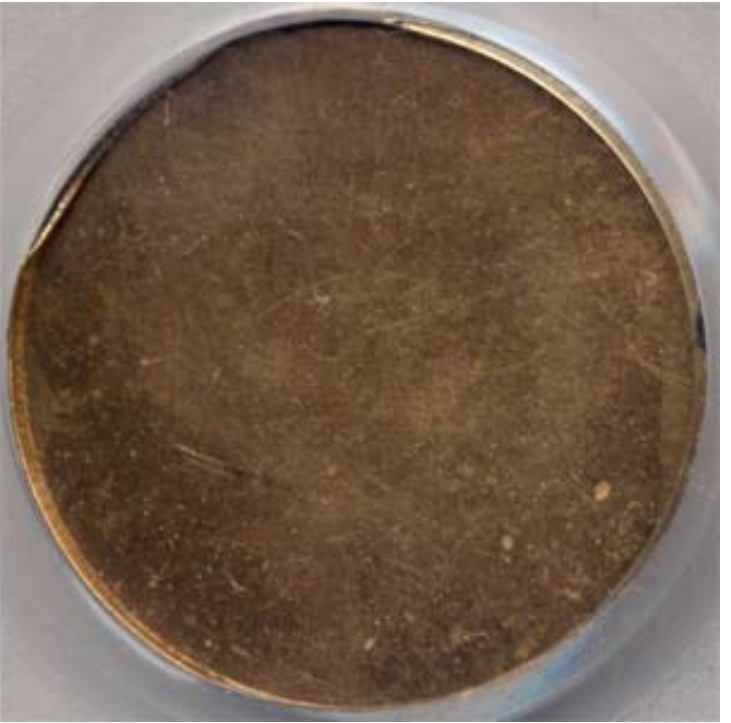
This is a unique pair of 1825 English Gold Sovereign die trials. The obverse design depicts William Wyon's Bare Head of George IV to left, legends around, date below and a blank reverse. The reverse design depicts crown and draped arms surrounded by legend with a blank obverse.

Both of these die trials are in choice brilliant proof condition and have an attractive gold color. This is the only pair of 1825 Sovereign die trials known and are not recorded in any reference books. These are missing from all major English gold collections.

The composition is copper plated with a heavy layer of gold since these are Barton's metal specimens. This die trial pair is a significant rarity and is now being offered for the first time. They were purchased from a major collection consisting of English proof and mint state Sovereigns and Sovereign Patterns.

The only other uniface gold die trial of George IV is a 5 Pound piece which was auctioned by American Numismatic Rarities when they sold the Eliasberg Collection. It was valued in their catalog between \$25,000 - \$40,000.







DOWNLOAD NOW AT MIKEBYERS.COM

HARD COPIES ARE AVAILABLE TO OUR REGULAR CUSTOMERS

BYERS NUMISMATIC CORP  
MIKEBYERS.COM



The Largest Dealer of the World's Rarest Mint Errors™  
U.S. ERRORS • WORLD & ANCIENT ERRORS • DIE TRIALS • CURRENCY ERRORS

# Mike Byers' 2005 Catalog

Featuring  
U.S. & World  
Major Mint Errors  
and Die Trials

*This catalog features almost 700 rarities with a value of over \$6 million.*



# **CONECA**

The Combined Organizations of Numismatic Error Collectors of America



**CONECA is a national numismatic organization devoted to the education of error and variety coin collectors. CONECA focuses on many error and variety specialties, including doubled dies, Repunched mintmarks, multiple errors, clips, double strikes, off-metals and off-centers -- just to name a few. It publishes an educational magazine, The Errorscope, which is printed and mailed to members bimonthly. CONECA offers a lending library, examination, listing and attribution services; it holds annual meetings at major conventions (referred to as Errorama) around the country, and offers auction services to its members. Please visit [conecaonline.org](http://conecaonline.org) and enjoy!**

#### **CONECA Variety Attribution Services**

CONECA offers two attribution services. One service enables members and non-members to send their coins directly to an authorized CONECA attributer. The other service is offered through the numismatic grading firm of ICG and enables CONECA members and non-members to have their coins attributed by a CONECA attributer and then graded and slabbed by ICG.

#### **CONECA Error Examination Services**

CONECA offers two examination services. One service enables members and non-members to send coins to an authorized CONECA examiner who will return an opinion of each coin's error classification. The other service is offered through the numismatic grading firm of ICG and enables CONECA members and non-members to have their coins examined by a CONECA examiner and then graded and slabbed by ICG.

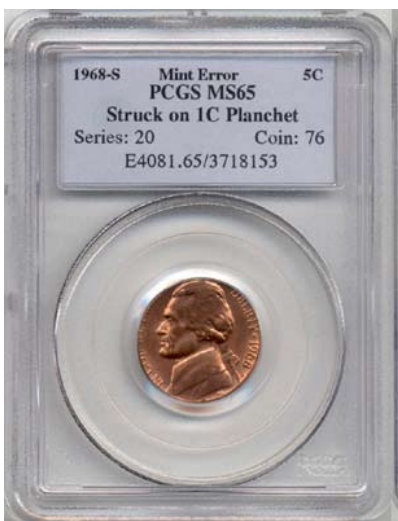
# **[conecaonline.org](http://conecaonline.org)**



# Off-Metals Struck At The San Francisco Mint

A very small group of PROOF and mint state errors recently came from a collection that was auctioned by the State of California. The U.S. Secret Service inspected and released this collection to the State of California determining that it was legal to own. The State of California then auctioned the collection and it has been dispersed since the sale.

Included in this collection was a batch of mint state off-metals struck in the San Francisco Mint from 1965 through 1970. Several of these dates are extremely rare. The 1965 and 1966 Cents are struck on clad Dime blanks which were intended for the striking of the Special Mint Sets. The 1968-S Cent are struck on clad Dime blanks which were intended for the striking of Proof coins. The 1968-S and 1970-S Nickels struck on Cent blanks are extremely rare.







# How HOT is the error coin market?

By Rich Schemmer  
Rich Schemmer's Error Coins

The 1906 San Francisco fire would look like a camp fire compared to the Error coin market of today!

Prices are rising so fast we can hardly keep up with it. Everything from Museum Quality error coins to so-called common Off Center cents are rising 25% to 50% to 100% over previous prices of just a year ago. Dealers are reporting from every part of the nation that the biggest problem is trying to locate new material to replenish what has been sold! Our own inventory is down 40% as coins seem to fly out into customer's hands.

Off Metals seem to lead the pack, along with double denominations. Type coin errors are coming on fast as they are being looked upon by many collectors for their true rarity. Many new record setting prices are being paid for errors in major auctions lately. I recently turned on a popular TV shoppers program and they were selling certified Undated Off center Cents for \$50 each!! Same coin graded MS 66 was being sold for \$89 each. How about \$1,800 for a Cent on a Dime Planchet? I know your saying that's ridiculous, but it is apparent they have a "market" for them on TV and there is a large television audience that is willing to pay those prices.

OK, but how long ago was it when you were willing to pay \$350 to \$500 for a Cent struck on a Struck Dime! Otherwise known as a "Double Denomination." 2-3 years ago? Now they can be seen regularly at the \$1,000-1,300 price range. That is a 150% to 300% increase, or 50% to 100% increase EVERY year! NOW what other market out there is as HOT as

Error Coins? Stocks, real estate, bullion?

The ANA Summer seminar has added a second error class because of the great demand for students to learn more about errors (PS: I currently teach one of those classes for the ANA). ALL the Major grading services currently certify errors for their customers. The US Mint, by making improvements to their facilities is releasing just a fraction of the errors that had once been available. Why a recent 2005 double struck State quarter sold in auction for over \$2,200.

Have I created a sense of urgency in my article? Do I write as if I'm trying to start a panic among error collectors? What I trying to tell you is those days of sitting back and waiting for that particular error you've wanted at a "price" you want it for is over. There are few deals out there anymore. Next year the prices will be another 50% to 100% higher and maybe again the following year, then the next year and the year after that! Buying it now will be the smartest and cheapest you're going to see it for, for a VERY long time to come. How many are you currently saying "why didn't I buy that error last year?" Well you'll be saying that next year too. Buy what you can afford now and avoid the wild fire of price increases yet to come.

(The above is just the opinion of the author and with all markets there is a chance of market adjustments. It should not be taken as Investment advice and the author wants to make you aware of such... research what you are buying before you purchase it, and seek advice from a qualified dealer.)



# BYERS NUMISMATIC CORP



## MIKEBYERS.COM



The Largest Dealer of the World's Rarest Mint Errors™

U.S. & WORLD MAJOR MINT ERRORS • DIE TRIALS • NUMISMATIC RARITIES

# Consign Your Coins to Mike Byers

## Terms and Conditions

We are offering this service for error collectors and dealers alike. The reason why we are doing this is to promote the error business through the world wide web and to connect error collectors with the coins they have been searching for. In order to post your item on our web site: [byersnc.com](http://byersnc.com), you must agree to the following terms and conditions.

1. All major U.S. mint errors are accepted if they are certified by ANACS, PCGS, NGC or ICG.
2. The approximate value of each item must exceed \$1000.
3. The minimum time for any listing is thirty days.
4. Seller agrees to a seven day return privilege from date of receipt.
5. Seller agrees to use an escrow service if requested by the buyer.
6. We reserve the right to deny or cancel any listing at any time.
7. All listing are subject to prior sale.

Please do not offer us the following:

1. More than two coins bonded together.
2. Caps more than ½ inch high.
3. U.S. Errors that were obviously and intentionally struck as error coins. No impossible mint errors.

We only accept consignments of U.S. Errors that were legitimately found or released thru normal distribution channels.

## Scanning Specifications

1. Scan both the obverse and reverse of the entire holder.
2. Scan with a resolution of at least 300 dpi.
3. Save the picture in jpeg format (jpg).

## Information Requirements

In addition to e-mailing a photo of your item, please include the following information:

1. Name, Address & Phone Number
2. E-Mail Address
3. Asking Price

After your item is listed, we will contact you by e-mail with any offers and questions. Once a price is agreed upon we will handle the entire sale for a 10% transaction fee, which includes all costs (eBay fees, grading fees, webmaster charges, postage and registration fees, insurance, paperwork, etc.).

If you have a Mint Error collection for sale or would like to sell your duplicates and do not want to consign your coin(s), we can purchase your entire collection outright. Please contact us at [mike@mikebyers.com](mailto:mike@mikebyers.com).



# Jim's Coins

## MAIL BID SALE #9

**CLOSES AUGUST 1, 2005**

- 1) SEND ALL BIDS TO: JIM'S COINS, 702 N. MIDVALE BLVD. B-2, MADISON, WI 53705, OR FAX #608-233-0175, PHONE 608-233-0175, OR EMAIL: jimcoins@sbcglobal.net
- 2) THE HIGHEST BIDDER ACKNOWLEDGED BY THE AUCTIONEER SHALL BE THE BUYER. THE AUCTIONEER RESERVES THE RIGHT TO REJECT ANY BID OR WITHDRAW ANY LOT FROM THE SALE. BIDDERS ARE RESPONSIBLE FOR THEIR OWN ERRORS, SO DOUBLE CHECK YOUR BIDS. THE FIRST POSTMARK WINS IN CASE OF A TIE BID.
- 3) ALL SALES ARE FOR CASH AND ARE PAYABLE IMMEDIATELY UPON RECEIPT OF THE INVOICE
- 4) AUCTIONS ARE OPEN TO ALL AND NO DEPOSIT IS REQUIRED OR DESIRED.
- 5) NO UNLIMITED BIDS ARE ACCEPTED. WINNING BIDDERS WILL BE AWARDED LOT AT A 10% ADVANCE OVER THE SECOND HIGHEST BID. IF NO OTHER BIDS ARE RECEIVED FOR A LOT, THE BIDDER WILL BE AWARDED THE LOT AT THE MINIMUM BID, OR ESTIMATE IF NO MINIMUM IS GIVEN.
- 6) ALL ITEMS ARE GUARANTEED GENUINE. BIDDERS MAY RETURN ANY ITEM NOT AS DESCRIBED. BID EARLY AND BID OFTEN. THANKS! -LEN & JIM

1	1921 S	DOLL	UNCENTERED BROADSTRIKE LOOKS APROX 5% OFF CENTER 10:30 PCGS	AU55	MB	\$699.00	
2	1921 D	DOLL	BROADSTRUCK OUT OF COLLAR FROM H.PHILLIPS COLLECTION PCGS LOOKS O/C TOWARDS 2:00	AU58	MB	\$795.00	
3	1972	DOLL	BROADSTRUCK ON TYPE I PLANCHET FROM PHILLIPS COLLECTION NICELY CENTERED PCGS	AU58	MB	\$200.00	
4	1976	DOLL	SUPER WEAK DIE ADJUSTMENT STRIKE, OBV ONLY FRONT OF FACE, REV ONLY LEFT EDGE OF BELL BICENTENNIAL NGC	MS60	MB	\$1,150.00	
5	1972 D	DOLL	10% OFF CENTER 9:30 NICE BRIGHT NGC	MS64	MB	\$325.00	
6	1974 D	DOLL	DUBL STRUCK, 2ND FLIP OVER 90% OFF CENTER 5:00 UNIFACE OBV, REV HAS NO DETAILS BUT NICE STRONG STRIKE PCGS	MS64	MB	\$1,195.00	
7	1978 D	DOLL	DOUBLE STRUCK IN COLLAR, ROTATED WIDTH OF NUMERALS 1997788, COUPLE LITE SCRATCHES OBV NOT BAD NGC	MS60	MB	\$1,650.00	
8	1979 D	DOLL	MISSING CLAD LAYER OBV 6.08 GRAMS, NGC	MS64	MB	\$525.00	
9	1979 P	DOLL	MISSING REV CLAD LAYER BEFORE STRUCK LOTS RED PCGS	MS64	MB	\$360.00	
10	N.D.	DOLL	S.B.A, 70% OFF CENTER 7:00 DIE STRK BOTH SIDES, SCRAPED UPSET RIM REV BLANK AREA ANACS	MS62	MB	\$395.00	
*	11	1999 P	DOLL	TRIPLE STRUCK, 2ND & 3RD STRIKES 20% O/C 2:00 NEAT PCGS	MS65	MB	\$1,950.00
12	2000 P	DOLL	RETAINED DIE BREAKS ON REV AT APROX 2:00 & 8:00 RETAINED CUDS NGC	MS66	MB	\$525.00	
*	13	2000 P	DOLL	25% CURVED CLIP 10:00 STRONG BLAKESLEY EFFECT TOO NGC	MS66	MB	\$295.00
14	1992	ASE	STRUCK IN RETAINED STRING REV 8-10:30 NGC	MS69	MB	\$95.00	
15	1986	ASE	OBV BODY HEAVY STRK THRU, REV CENTER STRUCK THRU NGC	BU	MB	\$200.00	
*	16	1946	HALF	BLACK WIRE "STAPLE" STRUCK INTO CENTER REV THAT'S A WOWSER COIN PCGS	AU58	MB	\$1,998.00
17	1957	HALF	6% STRAIGHT CLIP 8:00, 11.8 GRAMS NGC	MS62	MB	\$250.00	
18	1989 P	HALF	MISSING REV CLAD LAYER BEFORE STRUCK BRIGHT RED ANACS	MS62	MB	\$375.00	
19	1969 D	HALF	MISSING OBV LAYER 147 GRAINS BEFORE STRUCK PCGS	MS62	MB	\$340.00	
20	1964	HALF	STRUCK ON ROLLED THIN PLANCHET 10.4 GR S/B 12.50 GR PCGS	MS62	MB	\$375.00	
21	1974	HALF	STRUCK ON A TAIWAN \$5.00 PLANCHET A WOWSER NGC	MS65	MB	\$695.00	
22	1964	HALF	NICE RAGGED EDGE CLIP 6:30 TO 8:00 LIGHT TONING ANACS	MS64	MB	\$55.00	
*	23	1964	HALF	STRUCK ON QUARTER PLANCHET 6.2 GR FULL HEAD & TOP HALH DATE NGC	AU55	MB	\$795.00
*	24	1971	QUAR	STRUCK ON DIME PLANCHET 2.2 GR NGC	MS63	MB	\$430.00
*	25	1954	QUAR	STRUCK ON SILVER DIME PLANCHET FULL DATE, HAS A SCRAPE ON TOP HEAD NO SO BAD THOUGH 2.3 GR NCS UNC DETAILS	UNC*	MB	\$675.00
26	1970 D	QUAR	STRUCK ON PHILIPPINE 10c PLANCHET FULL DATE NICE COPPER NICKEL COLOR ANACS	MS60	MB	\$389.00	
27	1956	QUAR	STRUCK ON NICKEL PLANCHET H. PHILLIPS COLLECTION PCGS	AU58	MB	\$750.00	
28	N.D.	QUAR	STRUCK ON COPPER CENT PLANCHET NGC BRN	MS63	MB	\$680.00	
*	29	N.D.	QUAR	SILVER STRUCK THRU CLOTH OBV GOOD WEAVE PATTERN PCGS	AU55	MB	\$425.00
*	30	N.D.	QUAR	CLAD, OBV STRUCK THRU CLOTH NICE WEAVE PATTERN SM SPOT TOP HEAD PCGS	AU58	MB	\$390.00
31	N.D.	QUAR	STRUCK ON CLAD DIME PLANCHET, UNIF OBV 2 BLANKS IN COLLAR LOOKS DUBL STRK REV NGC	MS64	MB	\$549.00	
*	32	1976	QUAR	25% OFF CENTER 2:00 NEAT BICENTENNIAL ANACS	MS62	MB	\$375.00

*	33	1999	QUAR	DEL, STRUCK 20% OFF CENTER ON 53% STRAIGH EDGE SCRAP, FULL HORSE & DATE PCGS	MS64	MB	\$450.00
	34	2000 D	QUAR	S.C, OBV CLAD LAYER OFF BEFORE STRUCK PCGS	MS64	MB	\$325.00
	35	2000 P	QUAR	N.H, MISSING CLAD LAYER OFF BEFORE STRUCK ANACS	MS60	MB	\$295.00
	36	2002 D	QUAR	LA, MISSING REV CLAD LAYER OFF BEFORE STRK 4.64 GRS ICG	UNC	MB	\$395.00
	37	1999 P	QUAR	N.J, DOUBLE STRUCK, 2ND 70% O/C 8:00 UNIF REV NGC	MS64	MB	\$398.00
	38	1999 P	QUAR	N.J, DOUBLE STRUCK, 2ND 75% O/C 4:00 UNIF REV PCGS	MS63	MB	\$398.00
*	39	1999 P	QUAR	GA, MULTI STRUCK, 2/3/? STRUCK 20% OFF CENTER 8:00 NGC	MS65	MB	\$475.00
	40	2000 P	QUAR	MA, OBV & REV FILLED DIES NGC	UNC	MB	\$39.50
	41	1917 S	DIME	10% OFF CENTER 4:30 LOOKS UNC LIGHT TONING NGC FULL BANDS	AU58	MB	\$379.00
*	42	N.D	DIME	OBV BROCKAGE MULTI STRUCK, REV NICE CUPPED UP 1/8" DEEP PCGS	MS66	MB	\$240.00
*	43	1995 P	DIME	STRUCK IN RETAINED "STAPLE" 7:00 TO POINT OF NECK PCGS	AU58	MB	\$150.00
*	44	1856 O	H10c	STRUCK 20% OFF CENTER 2:30 NEAT OLDIE ANACS	G 6	MB	\$750.00
	45	1898	NICK	STRUCK ON NICARAGUA 5c PLANCHET NICE OLDIE NGC	VF35	MB	\$775.00
*	46	1920	NICK	15% OFF CENTER 5:30 NICE BUFFALO ERROR NGC	MS63	MB	\$895.00
	47	N.D.	NICK	BUFFALO, 35% OFF CENTER 9:00 NICE CIRC EXAMPLE LOOKS 1/2 O/C NGC	VG8	MB	\$675.00
	48	1913	NICK	VAR 1, 5% STR CLIP 6:30 ANACS	MS62	MB	\$375.00
	49	1969 D	NICK	STRUCK ON PHILIPPINE 25c PLANCHET 65 GRS	AU58	MB	\$190.00
	50	1958	NICK	SINTERED PLANCHET ,NOT NOTED ON HOLDER NGC	MS64	MB	\$15.00
	51	1966	NICK	ON DIME PLANCHET NGC	MS62	MB	\$350.00
	52	1972 D	NICK	STRUCK ON CENT PLANCHET RED/BRN ANACS	MS63	MB	\$398.00
*	53	42-45	NICK	WAR TYPE, 45% OFF CENTER 7:30 TONED 6 FULL STEPS NGC	MS62	MB	\$499.00
	54	42-45	NICK	WAR TYPE, 65% OFF CENTER 4:30 NICE ORIG COLOR NGC	MS64	MB	\$499.00
*	55	1969 S	NICK	DOUBLE STRUCK, 2ND 85% O/C 7:00, EJECT SCR REV ANACS	AU55	MB	\$159.00
	56	1964	NICK	STRUCK THRU RETAINED PAR COIL SPRING REV SUPER NEAT ANACS	AU58	MB	\$950.00
	57	N.D.	NICK	HUGE MUSHROOM BROCAKGED BROADSTRIKE ALMOST HALF \$ SIZE 2 BIG PLAN SPLITS 6 FS ANACS	MS62	MB	\$140.00
*	58	1999 P	NICK	MATED PAIR, 1ST O/C THEN D/S, 30% INDENT 2ND IN 2 NGC HOLDERS FULL STEPS	MS65	MB	\$695.00
	59	1831	CENT	25% OFF CENTER 2:00 SOME CORROSION VG DETAILS NCS	GOOD	MB	\$295.00
	60	1899	CENT	DOUBLE STRUCK IN COLLAR BOTH STRIKES NICE DETAILS ON CENTER PCGS	VG10	MB	\$425.00
	61	1863	CENT	20% OFF CENTER 8:30 ANACS	VF20	MB	\$399.00
	62	1863	CENT	20% OFF CENTER 1:00 LIGHT SCRATCHES ON OBV, FULL LIBERTY ANACS NET	VG10	MB	\$159.00
	63	1886	CENT	STRUCK WITH COLLAR DIE BREAK BN NGC	EF45	MB	\$395.00
*	64	1981	CENT	DOUBLE DENOMINATION, FLIPOVER STRK ON STRUCK DIME INCREDIBLE DETAILS BOTH STRIKES NGC	MS66	MB	\$1,100.00
*	65	1916 D	CENT	UNCENTERED BROADSTRIKE LOOKS 8% O/C 3:00 RED/BRN NGC	MS64	MB	\$375.00
	66	1944	CENT	MULTI STRUCK IN COLLAR RED/BRN ANACS	MS60	MB	\$299.00
	67	N.D.	CENT	ON A NEAT ELLIPTICAL PLANCH FOOTBALL SHAPED 1.65 GR SOME RED NGC	MS64	MB	\$155.00
	68	1940	CENT	ON 5c THICKNESS STOCK 3.2GR BRN NGC	AU55	MB	\$179.00
	69	N.D.	CENT	WHEAT,OBV BROCKAGED BY EXPANDED CAP DIE BRN NGC	AU58	MB	\$179.00
	70	(1222)	OTHER	NICEA IMP, JOHN III GOLD COIN DOUBLE STRUCK NICK SIZE NEAT ICG	AU55	MB	\$360.00
	71	N.D.	OTHER	GR BRITAIN, 3 PEN, OBV DIE CAP LIKE REV BROCKAGE OF REV NEAT BRASS COIN	MS65	MB	\$115.00
	72	N.D.	OTHER	MEXICO, 1 PESO GOLD COIN STRUCK 30% OFF CENTER ON 5c PLANCHET A REAL WOWSER ANACS	AU50	MB	\$1,450.00
	73	N.D.	OTHER	PHILIPPINE PESO STRUCK ON U.S. QUARTER PLANCHET NGC	MS64	MB	\$349.00
	74	1770	\$2	CONTINENTAL CURRENCY MARCH 1,1770. REVERSE DOUBLE PRINTED WELL USED "REPAIRED" VERY SCARCE	GOOD	MB	\$195.00
	75	1957 B	\$1	SILVER CERT, MISMATCHED SER NUMBERS 1ST NUMBER 3 & 4	CU	MB	\$250.00
	76	1957 B	\$1	SILVER CERT, MISMATCHED SER # AS ABOVE AND COSEC SER# TO ABOVE	CU	MB	\$250.00
*	77	1935 F	\$1	SILVER CERT, GOOD SIZE BUTTERFLY CORNER LOW LEFT WITH REV PRINT ON OBV WHITE REV	CU	MB	\$250.00
*	78	1995	\$1	FED RES NOTE=FRN, 3" LONG FOLD OVER PRINTED REV WITH WHITE REV MAJOR VERTICLE BUTTERFLY	VF	MB	\$225.00
*	79	2003	\$1	F.R.N, REV MOST PRINTED THRU CLOTH WITH BLACK INK ON IT WOW!	CU	MB	\$165.00
	80	1981	\$1	F.R.N, 2 CONSEC NOTES WITH APPROX 1/2x3/4" BLACK INK SMEAR TOP CENTER RT SIDE	CU	MB	\$65.00
*	81	1935 E	\$1	SILV CERT, 1/8" WHITE GUTTER FOLD TOP TO BOTTOM O & R NEAR CENTER	VG	MB	\$45.00

SEE [jimscoins.net](http://jimscoins.net) FOR FULL AUCTION

Coming In 2006  
A New Book By Mike Byers

From the Publisher & Editor of [mintererrornews.com](http://mintererrornews.com)

# MINT **E**RROR GUIDE

Your Guide to the Most Spectacular Major Mint Errors



DISCOVERIES

AND

PRICE GUIDE



FOR U.S. AND WORLD  
MAJOR MINT ERRORS  
AND DIE TRIALS



by **Mike Byers**

Design & Layout: Sam Rhazi





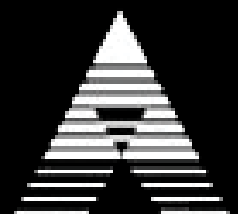
## Extraterrestrial Numismatics

[www.anacs.com](http://www.anacs.com)

ANACS is the Collector's Choice because we know what counts: knowledge, integrity, and service. How much we value coin collecting is evident in our work.

The ANACS team enthusiastically works to advance coin collecting by offering unequalled expertise and developing new services.

This makes ANACS the choice of hobbyists, professional numismatists, and dealers. We are the coin grading service to contact when you want to know all the details about your coin's authenticity and grading.



Collect with passion. ANACS

# Mint Error News Price Guide

This price guide is brought to you by Mint Error News. It has been compiled by many of the top major mint error dealers.

This price guide is a guide. Prices fluctuate due to the date, grade, eye appeal and how dramatic the striking error is. Rarity is also a factor. The price is sometimes based on the rarity and grade of the type of coin as well as how rare the error is. The price can also vary depending on whether two collectors are bidding for the same rare major mint error. When purchasing a mint error, it is important to use multiple resources to determine value, as there are many mint errors that do not fit into one category.

## Proof Errors



Proof coins are struck by technicians who hand feed the blanks into special presses. They are produced, examined, and packaged using extreme quality control. It is very unusual to find major proof errors. A few broadstrikes, off-centers, double strikes in collars and off-metals have been known to be found in sealed proof sets. Proof errors are aggressively sought after by many error collectors.

A very small group of Proof errors recently came from a collection that was auctioned by the State of California. The U.S. Secret Service inspected and released this collection to the State of California determining that it was legal to own. The State of California then auctioned the collection and it has been dispersed since the sale.

Denomination	Broadstrikes	Die Trials	Double/Triple Strikes	Off-Center Strikes	Partial Collar Errors
Proof Lincoln Cent	\$1,500 - \$2,500	N/A	\$4,000	\$1,500 - \$3,000	\$750
Proof Jefferson Nickel	\$2,500 - \$4,000	\$4,000	\$6,000	\$2,000 - \$5,000	\$1,000
Proof Clad Dime	\$3,000 - \$5,000	N/A	\$6,000	\$2,500 - \$5,000	\$1,250
Proof Clad Quarter	\$4,000 - \$5,000	N/A	\$7,500	\$3,000 - \$6,000	\$1,500
Proof Clad Half	\$5,000 - \$7,000	\$4,000 - \$5,000	\$7,500	\$4,000 - \$7,500	\$2,000

# Mint Error News Price Guide

## Broadstrikes



A broadstruck error occurs when a coin is struck without the collar to form the rim and edge that is part of the shape of the coin. Coins can be broadstruck on either type one or type two planchets. When a coin is broadstruck the blank being fed into the collar will spread and distort outward as it is being struck because the collar isn't in the correct position to retain it.

Denomination	(Small) XF/AU	(Small) Unc	(Large) XF/AU	(Large) Unc
Large Cent	\$150	\$300	\$400	\$1,500
Flying Eagle Cent (1857 – 1858)	\$1,000	\$2,500	\$1,500	\$5,000
Indian Cent	\$50	\$150	\$200	\$350
Lincoln Cent 1930 and Earlier	\$50	\$150	\$100	\$250
Lincoln Cent 1943 Steel	\$40	\$100	\$75	\$200
Proof Lincoln Cent	N/A	\$1,500	N/A	\$2,500
3 Cent Nickel	\$250	\$1,000	\$400	\$1,500
3 Cent Silver	\$1,000	\$3,500	\$1,500	\$5,000
Shield Nickel	\$400	\$1,250	\$1,000	\$2,500
Liberty Nickel	\$150	\$300	\$200	\$600
Buffalo Nickel	\$100	\$200	\$200	\$500
Jefferson Nickel War Time	\$100	\$200	\$200	\$500
Proof Jefferson Nickel	N/A	\$2,500	N/A	\$4,000
Seated Half Dime Legend	\$1,500	\$3,500	\$2,000	\$7,500
Seated Dime Legend	\$1,500	\$3,500	\$2,000	\$7,500
Barber Dime	\$150	\$250	\$200	\$400
Mercury Dime	\$40	\$150	\$150	\$250
Proof Clad Dime	N/A	\$3,000	N/A	\$5,000
Barber Quarter	\$600	\$1,250	\$1,000	\$2,500
Standing Liberty Quarter	\$2,000	\$4,000	\$3,000	\$6,000
Washington Quarter Silver	\$75	\$150	\$100	\$250
State Quarter	N/A	\$25	N/A	\$50
Proof Clad Quarter	N/A	\$4,000	N/A	\$5,000
Barber Half	\$2,500	\$3,500	\$3,000	\$5,000
Walking Liberty Half	\$3,000	\$5,000	\$4,000	\$7,000
Franklin Half	\$1,500	\$3,000	\$2,000	\$4,000
Kennedy Half Silver	\$150	\$250	\$200	\$300
Kennedy Half Clad	\$40	\$60	\$50	\$75
Proof Clad Half	N/A	\$5,000	N/A	\$7,000
Morgan Dollar	\$200	\$500	\$400	\$1,000
Peace Dollar	\$4,000	\$6,000	\$6,000	\$7,500
IKE Dollar	\$100	\$150	\$150	\$200
SBA Dollar	\$50	\$75	\$100	\$200
Sac Dollar	N/A	\$300	N/A	\$500



# Mint Error News Price Guide

## Partial Collars



**P**artial collar strikes occur when there is a malfunction of the striking press. This causes the collar to be in an incorrect position. The lower die (usually the reverse die) is recessed in the collar. This allows the coin which is going to be struck to have a formed rim. After a coin is struck the lower die raises upwards, pushing the struck coin out of the collar and ejecting it. If a blank entering the collar is not properly seated, it will only have partial reeding as it is struck. The edge of this coin will have a partial reeding and a partial blank surface area. Recently, the Mint has installed new machinery where either die can be installed in either position.

Denomination	XF/AU	Unc
Large Cent	\$100	\$200
Flying Eagle Cent (1857 – 1858)	\$500	\$1,500
Indian Cent	\$35	\$100
Lincoln Cent 1930 and Earlier	\$30	\$100
Lincoln Cent 1943 Steel	\$25	\$50
Proof Lincoln Cent	N/A	\$750
3 Cent Nickel	\$150	\$500
3 Cent Silver	\$750	\$2,000
Shield Nickel	\$200	\$600
Liberty Nickel	\$50	\$150
Buffalo Nickel	\$50	\$75
Jefferson Nickel War Time	\$40	\$60
Proof Jefferson Nickel	N/A	\$1,000
Seated Half Dime Legend	\$750	\$1,500
Seated Dime Legend	\$500	\$1,250
Barber Dime	\$75	\$150
Mercury Dime	\$30	\$100
Proof Clad Dime	N/A	\$1,250
Barber Quarter	\$300	\$750
Standing Liberty Quarter	\$1,250	\$2,000
Washington Quarter Silver	\$40	\$75
State Quarter	N/A	\$15
Proof Clad Quarter	N/A	\$1,500
Barber Half	\$1,000	\$1,500
Walking Liberty Half	\$1,500	\$3,500
Franklin Half	\$500	\$1,000
Kennedy Half Silver	\$50	\$100
Kennedy Half Clad	\$20	\$30
Proof Clad Half	N/A	\$2,000
Morgan Dollar	\$150	\$300
Peace Dollar	\$1,000	\$2,500
IKE Dollar	\$50	\$100
SBA Dollar	\$20	\$30
Sac Dollar	N/A	\$100

# Mint Error News Price Guide

## Uniface Strikes



Uniface coins occur when there have been two blank planchets in the press at the same time. The other blank will obstruct the die on either the obverse or reverse side, which will prevent it from having that design on the coin. There are many different variations involving uniface errors. In addition to having a 100% blank obverse or reverse, a coin can be struck off-center, with a blank planchet in the collar which will obstruct one side of the off-center. There are also mated pairs which have a combination of multiple errors which can include a side which is uniface. Finally, there are uniface strikes due to a die cap which adhered to the die, forming itself in the shape of a die and striking blank planchets.

Denomination	Uniface Obverse XF	Uniface Obverse Unc	Uniface Reverse XF	Uniface Reverse Unc
Large Cent	\$1,500	\$4,000	\$1,250	\$3,000
Indian Cent	\$1,250	\$3,000	\$1,000	\$2,500
Lincoln Cent 1943 Steel	\$250	\$500	\$200	\$400
Lincoln Cent Wheat Ears	\$50	\$100	\$40	\$75
3 Cent Nickel	\$1,500	\$3,000	\$1,250	\$2,500
Shield Nickel	\$1,750	\$4,000	\$1,500	\$3,000
Liberty Nickel	\$2,000	\$3,500	\$1,500	\$3,000
Buffalo Nickel	\$2,250	\$3,000	\$2,000	\$2,500
Jefferson Nickel War Time	\$300	\$750	\$250	\$500
Jefferson Nickel	\$20	\$40	\$20	\$40
Barber Dime	\$2,000	\$3,000	\$1,500	\$2,500
Mercury Dime	\$1,500	\$2,500	\$1,250	\$2,250
Roosevelt Dime Silver	\$100	\$150	\$100	\$150
Roosevelt Dime Clad	\$40	\$75	\$35	\$60
Washington Quarter Silver	\$400	\$750	\$350	\$500
Washington Quarter Clad	\$100	\$125	\$75	\$100
State Quarter	N/A	\$300	N/A	\$500
Kennedy Half Clad	\$750	\$1,000	\$500	\$750
IKE Dollar	\$2,000	\$3,000	\$1,750	\$2,500
SBA Dollar	N/A	\$1,000	N/A	\$750
Sac Dollar	N/A	\$1,500	N/A	\$1,000

# Mint Error News Price Guide

## Bonded Coins



**B**onded coins occur when the feeder system, which supplies blank planchets to the coin press, malfunctions and jams. When this occurs, a struck coin is not properly ejected and another planchet is fed into the collar and is struck. This struck coin will land on top of the previously unejected strike. These coins will then crush and bond together. This may occur many times as more coins bond.

Denomination	2 Planchets	3-4 Planchets
Lincoln Cent Wheat Ears	\$2,500	–
Lincoln Cent Memorial	\$400	\$1,000
Jefferson Nickel	\$600	\$1,500
Roosevelt Dime Silver	\$1,000	–
Roosevelt Dime Clad	\$600	\$2,000
Washington Quarter Silver	\$2,500	–
Washington Quarter Clad	\$1,500	–
State Quarter	\$5,000	–
Kennedy Half Silver	\$10,000	–
Kennedy Half Clad	\$7,500	–
IKE Dollar	–	–
SBA Dollar	–	–
Sac Dollar	–	–



# Mint Error News Price Guide

## Coins Struck on Feeder Finger Tips



After a recent tour of the U.S. Mint at Philadelphia, it was discovered that the minting process had changed to some degree. One of the changes was that “feeder fingers” were used during the striking of all denominations of U.S. coins. Prior to this tour, U.S. coins that were struck on feeder finger tips were authenticated and described as being struck on aluminum scrap. Coins from all modern denominations have been discovered that were struck on the tips of these feeder fingers.

Denomination	Small	Medium	Large
Lincoln Cent Memorial	\$2,500	\$3,500	\$5,000
Jefferson Nickel	\$3,000	\$4,500	\$6,000
Roosevelt Dime Clad	\$3,000	\$6,000	\$7,500
Washington Quarter Clad	\$4,000	\$6,000	\$7,500
State Quarter	\$4,500	\$6,500	\$8,500
Kennedy Half Clad	–	–	–
SBA Dollar	–	–	\$12,500
Sac Dollar	\$4,500	\$7,500	\$10,000

# Mint Error News Price Guide

## Struck Fragments



The blanking press takes the coils of metal strips and punches blanks out of it, ejecting the webbing at the other end. The webbing is cut into small scrap pieces to be melted and recycled. Occasionally a scrap piece will be mixed with the blank planchets and struck by the dies. Struck fragments are rare in the larger denominations. These can be uniface or die struck both sides and are very rare on type coins.

Denomination	Uniface	Die Struck Both Sides
Indian Cent	–	\$4,000
Lincoln Cent Wheat Ears	\$750	–
Lincoln Cent Memorial	\$75	\$125
3 Cent Nickel	–	\$7,500
Jefferson Nickel	\$100	\$200
Roosevelt Dime Silver	\$300	\$750
Roosevelt Dime Clad	\$150	\$250
Washington Quarter Silver	\$750	–
Washington Quarter Clad	\$200	\$300
State Quarter	\$750	\$1,000
Kennedy Half Silver	–	–
Kennedy Half Clad	\$750	\$1,250
IKE Dollar	–	–
SBA Dollar	\$2,000	\$4,000
Sac Dollar	–	–

# Mint Error News Price Guide

## Mated Pairs



**M**ated pairs involve two individual coins with different errors that were struck together at the same time. Mated pair error combinations can be found in most error types and come in many shapes and sizes. Mated pairs can be overlapped when one of the coins is struck off-center on top of another coin. Another type involves a brockage where a struck coin was perfectly centered on a blank and restruck. Some mated pairs involve a die cap where the cap and brockage coin are discovered together, but this is a scarce find.

The rarest mated pair type involves two die caps (obverse and reverse) where both dies were capped at the same time and both die caps are mated. This last type is extremely rare and there are only a few known examples of mated pairs involving an

obverse die cap and reverse die cap. There are several of these mated pairs known on Kennedy Halves including two dated 1976, which is the Bicentennial year. One of the most spectacular mated pairs involve two Barber Dimes, an obverse die cap mated to a reverse die cap and are unique.

Mated pairs can also involve an off-metal where a smaller blank planchet or smaller struck coin was struck on top of a larger coin. This type is extremely rare. The most spectacular pair known is a double struck Franklin Half which was mated to a Lincoln Cent. The Lincoln Cent blank was on top of the obverse of the struck Franklin Half. This pair was then struck together. It is unique.

Denomination	Overlapping	Full Brockage	Die Cap	2 Die Caps
Lincoln Cent Wheat Ears	\$1,000	\$1,500	–	–
Lincoln Cent Memorial	\$200	\$300	\$500	\$750
Liberty Nickel	–	\$20,000	–	–
Jefferson Nickel (pre War Time)	–	–	–	\$15,000
Jefferson Nickel	\$350	\$500	\$650	\$1,000
Barber Dime	–	–	–	\$40,000
Roosevelt Dime Silver	\$1,000	\$2,000	\$1,500	–
Roosevelt Dime Clad	\$500	\$750	\$1,250	\$2,000
Washington Quarter Silver	\$2,000	–	–	–
Washington Quarter Clad	\$1,000	\$2,500	–	–
State Quarter	\$3,000	\$5,000	\$7,500	–
Kennedy Half Silver	–	–	\$10,000	–
Kennedy Half Clad	\$7,500	\$8,500	\$10,000	\$12,500
IKE Dollar	–	–	–	–
SBA Dollar	\$7,500	–	–	–
Sac Dollar	–	–	–	–



# Mint Error News Price Guide

## Transitional Errors



A transitional error occurs when a coin is struck on a planchet from a previous year with different metal composition. The most famous transitional is a 1943 copper cent struck on a 1942 copper blank. 1943 cents were struck in steel because of the copper shortage during World War II. Other famous transitionals include 1965 coinage struck in silver instead of clad.

There are also transitionals struck on blanks for the next year. An example is 1964 coinage in clad instead of silver. Most recently, transitionals were discovered involving the SBA and Sacagawea Dollars of 1999 and 2000. There are eight known 1999 SBA Dollars struck on the brass planchet for the 2000 Sacagawea Dollar, and four known 2000 Sacagawea Dollars struck on a clad planchet for the 1999 SBA Dollar.

Denomination	Off-Metal Planchet	Circulated	AU	Unc	Choice Unc – Gem
Lincoln Cent 1943 Transitional	Copper Cent Planchet	\$40,000 +	\$60,000 +	\$85,000 +	\$100,000 +
Lincoln Cent 1944 Transitional	Steel Cent Planchet	\$7,500	\$12,500	\$17,500	\$25,000
Lincoln Cent 1964 Transitional	Clad Dime Planchet	\$2,500	\$4,000	\$5,000	\$6,500
Lincoln Cent 1965 Transitional	Silver Dime Planchet	\$2,750	\$4,500	\$6,000	\$7,500
Roosevelt Dime 1964 Transitional	Clad Dime Planchet	\$5,000	\$6,500	\$7,500	\$8,500
Roosevelt Dime 1965 Transitional	Silver Dime Planchet	\$5,000	\$6,500	\$7,500	\$8,500
Washington Quarter 1964 Transitional	Clad Quarter Planchet	\$5,000	\$6,500	\$7,500	\$8,500
Washington Quarter 1965 Transitional	Silver Quarter Planchet	\$5,000	\$6,500	\$7,500	\$8,500
Kennedy Half 1964 Transitional	Clad Half Planchet	\$5,000	\$6,000	\$7,000	\$9,000
Kennedy Half 1965 Transitional	Silver Half Planchet	\$5,000	\$6,500	\$7,500	\$10,000
Kennedy Half 1964 Transitional	Clad Quarter Planchet	\$5,000	\$6,000	\$7,500	\$8,500
Kennedy Half 1965 Transitional	Silver Quarter Planchet	\$6,000	\$7,500	\$8,000	\$9,000
Ike Dollar Transitional	40% Silver Planchet	\$2,750	\$3,000	\$3,500	\$4,000
SBA Dollar Transitional	Sacagawea Planchet	N/A	N/A	\$12,500	\$15,000
Sacagawea Dollar Transitional	SBA Planchet	N/A	N/A	\$12,500	\$15,000

# Mint Error News Price Guide

## U.S. Gold Errors



Major mint errors on U.S. Gold coins are the most prized category of all mint errors. Gold errors are very rare and a few have traded in the \$75,000 to \$100,000 range. Even a broadstruck U.S. Gold coin can easily sell for \$15,000 to \$30,000 compared to a broadstruck Cent, Nickel, Dime or Quarter which all sell for well under \$10. Many serious collectors of Gold Errors have to wait patiently for months and sometimes even years to acquire that one special piece for their collection.

The prices listed here are for common dates in AU-Unc. Better dates and errors that are in gem condition are worth considerably more.

Denomination	Partial Collar	Broadstruck	Clipped Planchet	3% - 5% Off-Center	10% - 15% Off-Center
\$1 Gold Type 1	\$5,000	\$10,000	\$5,000	\$12,500	\$20,000
\$1 Gold Type 2	\$6,000	–	\$12,500	–	–
\$1 Gold Type 3	\$4,000	\$7,500	\$5,000	\$10,000	\$20,000
\$2½ Liberty	\$5,000	\$7,500	\$4,000	\$10,000	\$15,000
\$2½ Indian	–	–	\$4,000	\$7,500	\$12,500
\$3 Indian	\$7,500	\$20,000	\$7,500	–	–
\$5 Liberty	\$6,000	\$12,500	\$6,000	\$15,000	\$25,000
\$5 Indian	–	–	\$6,000	\$15,000	\$30,000
\$10 Liberty	\$10,000	\$20,000	\$7,500	\$25,000	\$40,000
\$10 Indian	–	–	\$7,500	\$25,000	\$40,000
\$20 Liberty	\$10,000	\$25,000	\$10,000	\$30,000	\$150,000
\$20 St. Gaudens	–	–	\$10,000	–	–
\$5 American Eagle	\$1,000	\$2,000	\$750	\$2,500	\$3,500
\$10 American Eagle	\$1,250	\$2,500	\$1,000	\$3,000	\$3,500
\$25 American Eagle	\$1,500	\$3,000	\$1,500	\$3,500	\$5,000
\$50 American Eagle	\$2,000	\$4,000	\$2,000	\$5,000	\$7,500

# Mint Error News Price Guide

## Indents



An indent error occurs when two blanks are fed inadvertently into the same collar, with one blank partly overlaying on top of the other. When the hammer die strikes this combination, the upper blank will be forced into the lower blank, creating a depression which is shaped similar to the upper blank. A scarce type of indent occurs when a blank intended for one denomination lands on top of a blank from a different denomination.

Denomination	10% - 25% XF	30% - 50% XF	10% - 25% Unc	30% - 50% Unc
Large Cent	\$300	—	—	—
Indian Cent	\$250	\$500	\$400	\$650
Lincoln Cent 1943 Steel	\$100	\$300	\$175	\$500
Lincoln Cent Wheat Ears	\$30	\$75	\$75	\$125
3 Cent Nickel	\$500	\$1,250	\$1,500	\$3,000
Shield Nickel	\$1,000	\$1,500	\$2,000	\$3,000
Liberty Nickel	\$400	\$1,000	\$750	\$1,500
Buffalo Nickel	\$300	\$1,000	—	—
Jefferson Nickel War Time	\$200	\$400	\$400	\$750
Jefferson Nickel	\$10	\$25	\$15	\$30
Barber Dime	\$1,000	\$2,000	\$1,500	\$3,000
Mercury Dime	\$300	\$750	\$500	\$1,500
Roosevelt Dime Silver	\$30	\$60	\$50	\$100
Roosevelt Dime Clad	\$10	\$20	\$15	\$30
Washington Quarter Silver	\$100	\$200	\$150	\$300
Washington Quarter Clad	\$25	\$50	\$35	\$100
State Quarter	N/A	N/A	\$200	\$350
Kennedy Half Clad	\$150	\$300	\$200	\$400
IKE Dollar	\$350	\$1,000	\$500	\$1,500
SBA Dollar	N/A	N/A	\$250	\$500
Sac Dollar	N/A	N/A	\$400	\$750



# Mint Error News Price Guide

## Capped Dies



A capped die is caused when a struck coin sticks to the upper hammer die. Once the coin is struck to the die face, the reverse of the struck coin becomes the new die face. When the next blank is fed into the collar and the strike occurs, the reverse design of the adhered struck coin impresses itself into the new blank. This struck coin is a brockage strike. The coin that adhered to the upper die is known as a die cap. This process repeats itself as more coins are struck by the cap. The greater the number of strikes, the higher the cap metal will be pushed around the upper die shaft. Eventually, the cap brakes away from the die in the shape of a thimble.

Denomination	Obverse Cap XF	Obverse Cap Unc	Reverse Cap XF	Reverse Cap Unc
Large Cent	\$12,500	\$15,000	—	—
Indian Cent 1859	\$10,000	\$15,000	—	—
Indian Cent 1860-1864	\$8,500	\$12,500	—	—
Indian Cent 1864-1909	\$6,500	\$10,000	\$5,000	\$7,500
Lincoln Cent 1943 Steel	—	—	—	—
Lincoln Cent Wheat Ears	\$1,000	\$1,500	\$500	\$750
Lincoln Cent Memorial	\$150	\$200	\$50	\$100
2 Cent Piece	\$12,500	\$20,000	\$10,000	\$15,000
3 Cent Nickel	—	—	—	—
Shield Nickel	—	—	—	—
Liberty Nickel	\$12,500	\$20,000	—	—
Buffalo Nickel (1 Known)	—	\$30,000	—	—
Jefferson Nickel War Time	\$10,000	—	—	—
Jefferson Nickel	\$200	\$350	\$150	\$250
Barber Dime	\$12,500	\$15,000	\$7,500	\$10,000
Mercury Dime (2 Known)	\$6,500	\$10,000	—	—
Roosevelt Dime Silver	\$750	\$1,250	\$500	\$750
Roosevelt Dime Clad	\$200	\$400	\$200	\$250
Barber Quarter	\$15,000	\$20,000	—	—
Washington Quarter Silver	\$1,500	\$2,500	\$1,500	\$2,000
Washington Quarter Clad	\$350	\$500	\$250	\$350
State Quarter	N/A	\$1,000	N/A	\$600
Kennedy Half Silver	\$3,000	\$5,000	\$2,000	\$3,000
Kennedy Half Clad	\$2,000	\$3,500	\$1,500	\$2,000
Kennedy Half Bicentennial	\$2,500	\$4,000	\$1,750	\$2,500
IKE Dollar	—	\$20,000	—	—
SBA Dollar	N/A	\$20,000	N/A	\$15,000
Sac Dollar	N/A	\$20,000	N/A	\$15,000

# Mint Error News Price Guide

## Die Adjustment Strikes



Die adjustment strikes are also known as die trials. This error occurs when a coin is struck from the press with very little pressure. When the press is being set up and adjusted, extremely weak strikes occur as the strike pressure reaches its optimum level. These die trials are destroyed after being struck and are rarely found in circulation.

Denomination	XF/AU	Unc
Indian Cent	\$3,000	\$4,000
Lincoln Cent Wheat Ear	\$200	\$300
Lincoln Cent 1943 Steel	\$750	\$1,500
Lincoln Cent Memorial	\$50	\$75
2 Cent	\$5,000	–
Liberty Nickel	\$3,000	\$5,000
Buffalo Nickel	\$4,000	\$7,500
Jefferson Nickel War Time	\$1,250	\$2,000
Jefferson Nickel	\$75	\$100
Proof Jefferson Nickel	N/A	\$4,000
Barber Dime	\$4,000	\$5,000
Mercury Dime	\$3,500	\$5,000
Roosevelt Dime Silver	\$350	\$500
Roosevelt Dime Clad	\$100	\$125
Seated Quarter	\$10,000	\$15,000
Standing Liberty Quarter	\$15,000	\$20,000
Washington Quarter Silver	\$500	\$750
Washington Quarter Clad (Pre-State)	\$125	\$150
State Quarter	N/A	\$250 +
Walking Liberty Half	\$10,000	\$12,500
Kennedy Half Silver	\$500	\$750
Kennedy Half Clad	\$200	\$250
Proof Kennedy Half 40% Silver	N/A	\$5,000
Proof Kennedy Half Clad	N/A	\$4,000
Morgan Dollar	\$10,000	\$15,000
Peace Dollar	\$10,000	\$15,000
IKE Dollar	\$300	\$400
IKE Dollar Bicentennial	\$350	\$500
SBA Dollar	N/A	\$500
Sac Dollar	N/A	\$1,000

# Mint Error News Price Guide

## Double Denominations



One of the most expensive, popular, and desired types of errors are the double denominations. This error happens when a coin is struck on a previously struck coin of a smaller denomination. Examples are a cent on a struck dime, and a nickel on a struck cent. The most dramatic are those with considerable design visible from the original strike. There are a few known double denominations with different dates.

Denomination	Struck On	Circulated	AU	Unc
Lincoln Cent Wheat Ears	Mercury Dime	\$6,000	–	–
Lincoln Cent Wheat Ears	Roosevelt Dime	\$4,000	–	–
Lincoln Cent Wheat Ears	Foreign Coin	\$2,000	\$2,500	–
Lincoln Cent Memorial	Roosevelt Dime Silver	\$3,000	\$4,500	\$6,000
Lincoln Cent Memorial	Roosevelt Dime Clad	N/A	N/A	\$500
Lincoln Cent Memorial	Foreign Coin	N/A	600	\$750
Jefferson Nickel	Lincoln Cent Wheat Ears	\$1,500	\$2,000	\$2,500
Jefferson Nickel	Lincoln Cent Memorial	\$500	\$600	\$750
Jefferson Nickel	Foreign Coin	\$1,000	\$1,250	\$1,500
Jefferson Nickel	Roosevelt Dime	\$1,000	\$1,250	\$1,500
Roosevelt Dime Silver	Foreign Coin	\$4,000	\$5,000	\$7,500
Roosevelt Dime Clad	Foreign Coin	\$3,000	\$4,000	\$5,000
Washington Quarter Silver	Lincoln Cent Wheat Ears	\$3,000	\$4,000	\$6,000
Washington Quarter Silver	Lincoln Cent Memorial	\$2,500	\$3,000	\$3,500
Washington Quarter Silver	Foreign Coin	\$2,500	\$3,000	\$3,500
Washington Quarter Silver	Jefferson Nickel	\$3,000	\$4,000	\$6,000
Washington Quarter Silver	Roosevelt Dime Silver	\$2,500	\$3,000	\$3,500
Washington Quarter Clad	Lincoln Cent Memorial	\$2,500	\$3,000	\$3,500
Washington Quarter Clad	Foreign Coin	\$2,000	\$2,500	\$3,000
Washington Quarter Clad	Jefferson Nickel	\$2,500	\$3,000	\$3,500
Washington Quarter Clad	Roosevelt Dime Clad	\$2,000	\$2,500	\$3,000
State Quarter	Jefferson Nickel	N/A	\$5,000	\$6,000
State Quarter (Extremely Rare)	Any Other Denomination	N/A	\$10,000 +	–
Kennedy Half (Extremely Rare)	Any Denomination	–	–	–
IKE Dollar (Extremely Rare)	Any Denomination	–	–	–
Sac Dollar	Maryland State Quarter	N/A	\$4,500	\$5,500



# Mint Error News Price Guide

## Brockages



A brockage error can only occur when there are two coins involved. One of the coins involved will always be a struck coin which has not ejected properly. That struck coin will find its way back between the dies and will be struck next to a blank planchet which was fed into the collar. The image of that first struck coin will be impressed into that side of the blank planchet. The result will be a second coin which has images of the first coin impressed into it. Those images will be pressed into the coin and the image will be in reverse. This incuse sunken image is known as a brockage.

Denomination	50% Brockage XF	100% Brockage XF	50% Brockage Unc	100% Brockage Unc
Large Cent	\$600	\$1,000	\$3,000	–
Indian Cent	\$500	\$1,250	\$1,500	\$4,000
Lincoln Cent 1943 Steel	\$350	\$500	\$650	\$1,000
Lincoln Cent Wheat Ears	\$125	\$200	\$200	\$350
3 Cent Nickel	\$1,250	\$2,000	\$3,500	\$5,000
3 Cent Silver	\$2,000	\$3,000	\$3,000	\$6,000
Shield Nickel	\$1,500	\$2,500	\$3,500	–
Liberty Nickel	\$1,250	\$2,250	\$2,000	–
Buffalo Nickel	\$2,000	–	–	–
Jefferson Nickel War Time	\$250	\$750	\$750	–
Jefferson Nickel	\$50	\$75	\$50	\$150
Barber Dime	\$2,500	\$3,500	\$5,000	\$7,500
Mercury Dime	\$1,000	\$2,000	\$1,500	\$4,000
Roosevelt Dime Silver	\$100	\$200	\$150	\$250
Roosevelt Dime Clad	\$50	\$100	\$75	\$150
Washington Quarter Silver	\$200	\$500	\$500	\$1,000
Washington Quarter Clad	\$75	\$150	\$150	\$250
State Quarter	N/A	N/A	\$750	\$1,500
Kennedy Half Clad	N/A	N/A	\$650	\$1,500
IKE Dollar	\$1,500	\$2,000	\$3,000	\$5,000
SBA Dollar	N/A	N/A	\$500	\$1,500
Sac Dollar	N/A	N/A	\$1,500	–

# Mint Error News Price Guide

## Double & Multiple Strikes



When a blank planchet is struck by the dies, the normal procedure is for the feeders to eject the struck coin out of the collar and into a chute. If there is a malfunction and the struck coin isn't ejected, it may receive a second or third strike by the dies. A multiple struck coin can happen in many ways and have many combinations of errors.

Denomination	XF/AU	Unc
Large Cent	\$1,000	–
Indian Cent	\$600	\$1,000
Lincoln Cent 1930 and Earlier	\$850	\$1,500
Lincoln Cent 1943 Steel	\$400	\$1,000
Proof Lincoln Cent	N/A	\$4,000
3 Cent Nickel	\$2,000	\$3,500
Liberty Nickel	\$4,000	\$10,000
Buffalo Nickel	\$6,000	\$10,000
Jefferson Nickel War Time	\$750	\$2,000
Proof Jefferson Nickel	N/A	\$6,000
Barber Dime	\$4,000	\$10,000
Mercury Dime	\$3,500	\$8,500
Proof Clad Dime	N/A	\$6,000
Standing Liberty Quarter	\$12,500	\$20,000
Washington Quarter Silver	\$200	\$350
State Quarter	N/A	\$350 – \$750
Proof Clad Quarter	N/A	\$7,500
Walking Liberty Half	\$7,500	\$12,500
Franklin Half	\$5,000	\$10,000
Kennedy Half Silver	\$1,500	\$2,500
Kennedy Half Clad	N/A	\$750
Proof Kennedy Half Clad	N/A	\$7,500
Morgan Dollar	\$12,500	\$20,000
Peace Dollar	\$15,000	\$25,000
IKE Dollar	\$2,000	\$3,000
SBA Dollar	N/A	\$1,000 – \$2,500
Sac Dollar	N/A	\$1,500 – \$3,000

# Mint Error News Price Guide

## Off-Center Strikes



**O**ff-center coins are one of the most common and best known types of errors. This happens when a blank which is supposed to be fed into the press, lands in the collar improperly. When this occurs only part of the blank is between the upper and lower dies. When the dies strike the blank, only that part will be struck with a design.

Denomination	10% - 15% XF/AU	25% - 60% XF/AU	10% - 15% Unc	25% - 60% Unc
Large Cent	\$400	\$2,500	\$1,000	\$7,500
Flying Eagle Cent (1857 – 1858)	\$2,500	\$10,000	\$5,000	\$15,000
Indian Cent	\$100	\$400	\$200	\$600
Lincoln Cent 1930 and Earlier	\$75	\$300	\$150	\$750
Lincoln Cent 1943 Steel	\$40	\$250	\$100	\$500
Proof Lincoln Cent	N/A	N/A	\$1,500	\$3,000
3 Cent Nickel	\$300	\$1,500	\$600	\$3,500
3 Cent Silver	\$1,000	\$5,000	\$2,000	–
Shield Nickel	\$750	\$2,500	\$1,000	\$7,500
Liberty Nickel	\$250	\$1,000	\$500	\$2,500
Buffalo Nickel	\$250	\$750	\$400	\$1,500
Jefferson Nickel War Time	\$100	\$500	\$200	\$1,000
Proof Jefferson Nickel	N/A	N/A	\$2,000	\$5,000
Seated Half Dime Legend	\$3,000	\$7,500	\$5,000	\$15,000
Seated Dime Legend	\$2,000	\$7,000	\$3,500	\$10,000
Barber Dime	\$300	\$1,500	\$500	\$2,500
Mercury Dime	\$100	\$750	\$150	\$1,250
Proof Clad Dime	N/A	N/A	\$2,500	\$5,000
Barber Quarter	\$1,500	\$5,000	\$2,500	\$10,000
Standing Liberty Quarter	\$5,000	–	\$15,000	–
Washington Quarter Silver	\$50	\$100	\$75	\$150
State Quarter	N/A	N/A	\$75	\$300
Proof Clad Quarter	N/A	N/A	\$3,000	\$6,000
Barber Half	\$3,000	\$8,500	\$5,000	–
Walking Liberty Half	\$4,000	\$12,500	\$7,500	–
Franklin Half	\$2,500	\$4,000	\$3,500	\$6,000
Kennedy Half Silver	\$100	\$500	\$250	\$1,000
Kennedy Half Clad	\$60	\$250	\$100	\$400
Proof Clad Half	N/A	N/A	\$4,000	\$7,500
Morgan Dollar	\$3,000	\$13,500	\$7,500	\$20,000
Peace Dollar	\$7,500	\$15,000	\$8,500	\$30,000
IKE Dollar	\$125	\$1,250	\$150	\$2,000
SBA Dollar	N/A	N/A	\$100	\$500
Sac Dollar	N/A	N/A	\$1,000	\$3,500

# Mint Error News Price Guide

## Off-Metals



Off-metal and wrong planchet errors occur when a correctly made blank from one denomination is accidentally fed into a press for another denomination. Examples are a nickel struck on a cent planchet and a cent struck on a dime planchet. The coin struck on an incorrect blank will weigh exactly what the denomination of that blank would have been. An even more dramatic wrong planchet error is a coin struck on a previously struck coin of a different metal.

Denomination	Off-Metal Planchet	Circulated	AU	Unc	Choice Unc – Gem
Indian Cent	Foreign Planchet	\$1,000	\$1,500	\$3,000	\$5,000
Indian Cent	Dime Planchet	\$7,500	\$12,500	–	–
Lincoln Cent Before 1919	Dime Planchet	\$4,000	\$6,500	\$10,000	–
Lincoln Cent Before 1919	Foreign Planchet	\$1,500	\$3,000	\$6,000	–
Lincoln Cent 1919 – 1940	Dime Planchet	\$2,000	\$2,500	\$4,000	\$6,000
Lincoln Cent 1919 – 1940	Foreign Planchet	\$750	\$1,250	\$2,000	\$2,500
Lincoln Cent 1943 Steel	Dime Planchet	\$1,500	\$2,500	\$3,500	\$4,500
Lincoln Cent 1943 Transitional	Copper Cent Planchet	\$40,000 +	\$60,000 +	\$85,000 +	\$100,000 +
Lincoln Cent 1944 Transitional	Steel Cent Planchet	\$7,500	\$12,500	\$17,500	\$25,000
Lincoln Cent Wheat Ears (1941-1964)	Dime Planchet	\$500	\$600	\$1,000	\$1,500
Lincoln Cent 1965 and Later	Dime Planchet	\$125	\$150	\$200	\$350
Lincoln Cent 1964 Transitional	Clad Dime Planchet	\$2,500	\$4,000	\$5,000	\$6,500
Lincoln Cent 1965 Transitional	Silver Dime Planchet	\$2,750	\$4,500	\$6,000	\$7,500
Shield Nickel	Foreign Planchet	\$7,500	\$12,500	–	–
Shield Nickel	Cent Planchet	\$6,000	\$12,500	\$15,000	–
Liberty Nickel	Foreign Planchet	\$400	\$750	\$1,250	\$2,000
Liberty Nickel	Cent Planchet	\$2,000	\$3,000	\$6,000	\$7,500
Buffalo Nickel	Foreign Planchet	\$2,500	\$6,000	\$10,000	–
Buffalo Nickel	Cent Planchet	\$2,000	\$4,000	\$6,000	\$8,000
Jefferson Nickel Before 1950	Cent Planchet	\$250	\$500	\$750	\$1,000
Jefferson Nickel 1950 and Later	Cent Planchet	\$125	\$150	\$200	\$250
Jefferson Nickel 1943	Steel Cent Planchet	\$1,000	\$2,000	\$3,000	\$5,000
Jefferson Nickel 1964 and Earlier	Silver Dime Planchet	\$200	\$300	\$350	\$400
Jefferson Nickel 1965 and Later	Clad Dime Planchet	\$150	\$200	\$225	\$250
Roosevelt Dime Silver	Foreign Planchet	\$2,000	\$2,500	\$3,000	\$3,500
Roosevelt Dime Clad	Foreign Planchet	\$1,500	\$2,000	\$2,250	\$2,500
Roosevelt Dime 1964 Transitional	Clad Dime Planchet	\$5,000	\$6,500	\$7,500	\$8,500
Roosevelt Dime 1965 Transitional	Silver Dime Planchet	\$5,000	\$6,500	\$7,500	\$8,500
Washington Quarter Silver	Cent Planchet	\$300	\$400	\$500	\$750
Washington Quarter Silver	Nickel Planchet	\$300	\$400	\$500	\$600
Washington Quarter Clad	Cent Planchet	\$250	\$300	\$400	\$500
Washington Quarter Clad	Nickel Planchet	\$100	\$150	\$200	\$250
Washington Quarter	Silver Dime Planchet	\$300	\$400	\$500	\$650
Washington Quarter	Clad Dime Planchet	\$250	\$300	\$350	\$400
Washington Quarter 1964 Transitional	Clad Quarter Planchet	\$5,000	\$6,500	\$7,500	\$8,500
Washington Quarter 1965 Transitional	Silver Quarter Planchet	\$5,000	\$6,500	\$7,500	\$8,500
State Quarter	Cent Planchet	N/A	\$6,500	\$7,500	\$8,000
Delaware State Quarter	Nickel Planchet	N/A	\$500	\$650	\$750
All Other State Quarters	Nickel Planchet	N/A	\$1,000	\$1,250	\$1,500
State Quarter	Dime Planchet	N/A	\$5,000	\$5,500	\$6,000
Walking Half	Quarter Planchet	\$12,500	\$15,000	\$17,500	\$22,500
Walking Half	Foreign Planchet	\$10,000	\$12,500	\$17,500	\$20,000
Franklin Half	Cent Planchet	\$3,000	\$4,000	\$5,000	\$6,000
Franklin Half	Nickel Planchet	\$3,000	\$4,000	\$5,000	\$6,000
Franklin Half	Dime Planchet	\$3,500	\$4,500	\$5,500	\$6,500
Franklin Half	Quarter Planchet	\$600	\$750	\$1,000	\$1,250
Kennedy Half Silver 1964	Cent Planchet	\$1,000	\$1,250	\$1,500	\$2,000
Kennedy Half Silver 1964	Nickel Planchet	\$1,000	\$1,250	\$1,500	\$2,000
Kennedy Half Silver 1964	Dime Planchet	\$1,000	\$1,250	\$2,000	\$2,500
Kennedy Half Silver 1964	Quarter Planchet	\$400	\$500	\$600	\$750
Kennedy Half Clad	Cent Planchet	\$750	\$850	\$1,000	\$1,500
Kennedy Half Clad	Nickel Planchet	\$750	\$850	\$1,000	\$1,250
Kennedy Half Clad	Dime Planchet	\$750	\$850	\$1,000	\$1,400
Kennedy Half Clad	Quarter Planchet	\$350	\$400	\$450	\$500
Kennedy Half 1964 Transitional	Clad Half Planchet	\$5,000	\$6,000	\$7,000	\$9,000
Kennedy Half 1965 Transitional	Silver Half Planchet	\$5,000	\$6,500	\$7,500	\$10,000
Kennedy Half 1964 Transitional	Clad Quarter Planchet	\$5,000	\$6,000	\$7,500	\$8,500
Kennedy Half 1965 Transitional	Silver Quarter Planchet	\$6,000	\$7,500	\$8,000	\$9,000
Ike Dollar	Cent Planchet	\$3,000	\$3,750	\$5,000	\$6,000
Ike Dollar	Nickel Planchet	\$3,000	\$3,500	\$5,000	\$6,000
Ike Dollar	Dime Planchet	\$3,250	\$3,750	\$5,500	\$6,500
Ike Dollar	Quarter Planchet	\$2,750	\$3,000	\$4,000	\$4,500
Ike Dollar	Half Planchet	\$1,600	\$1,750	\$2,000	\$2,500
Ike Dollar	Foreign Planchet	\$900	\$1,000	\$1,250	\$1,500
Ike Dollar Transitional	40% Silver Planchet	\$2,750	\$3,000	\$3,500	\$4,000
SBA Dollar	Cent Planchet	N/A	\$1,750	\$2,250	\$3,000
SBA Dollar	Nickel Planchet	N/A	\$6,000	\$7,000	\$8,000
SBA Dollar	Dime Planchet	N/A	\$6,000	\$7,000	\$8,000
SBA Dollar	Quarter Planchet	N/A	\$600	\$850	\$1,000
Sac Dollar	Cent Planchet	N/A	\$8,000	\$9,000	\$10,000
Sac Dollar	Nickel Planchet	N/A	\$7,500	\$8,000	\$9,000
Sac Dollar	Dime Planchet	N/A	\$8,000	\$9,000	\$10,000
Sac Dollar	Quarter Planchet	N/A	\$1,500	\$2,000	\$2,500



# MINTERRORNEWS™

## Exclusive Discounts

Good for purchases on-line, eBay and at coin shows!

alscoins.com



**\$10 off a purchase of a mint error valued at \$100 or more from Al's Coins.**

Offer valid on purchases made from alscoins.com, eBay and at coin shows. This offer is good for any purchase made in the year 2005. One coupon per purchase. This coupon can not be used in conjunction with any other offer.

errorcointrader.com



**\$20 off a purchase of a mint error valued at \$200 or more from Error Coin Trader.**

Offer valid on purchases made from errorcointrader.com, eBay and at coin shows. This offer is good for any purchase made in the year 2005. One coupon per purchase. This coupon can not be used in conjunction with any other offer.

mikebyers.com



**\$250 off a purchase of a mint error valued at \$2,500 or more from Mike Byers.**

Offer valid on purchases made from mikebyers.com, eBay and at coin shows. This offer is good for any purchase made in the year 2005. One coupon per purchase. This coupon can not be used in conjunction with any other offer.

# MINT ERROR NEWS MAGAZINE

Bringing the latest mint error news to the collector.  
Issues of Mint Error News Magazine are available for you to read online at:

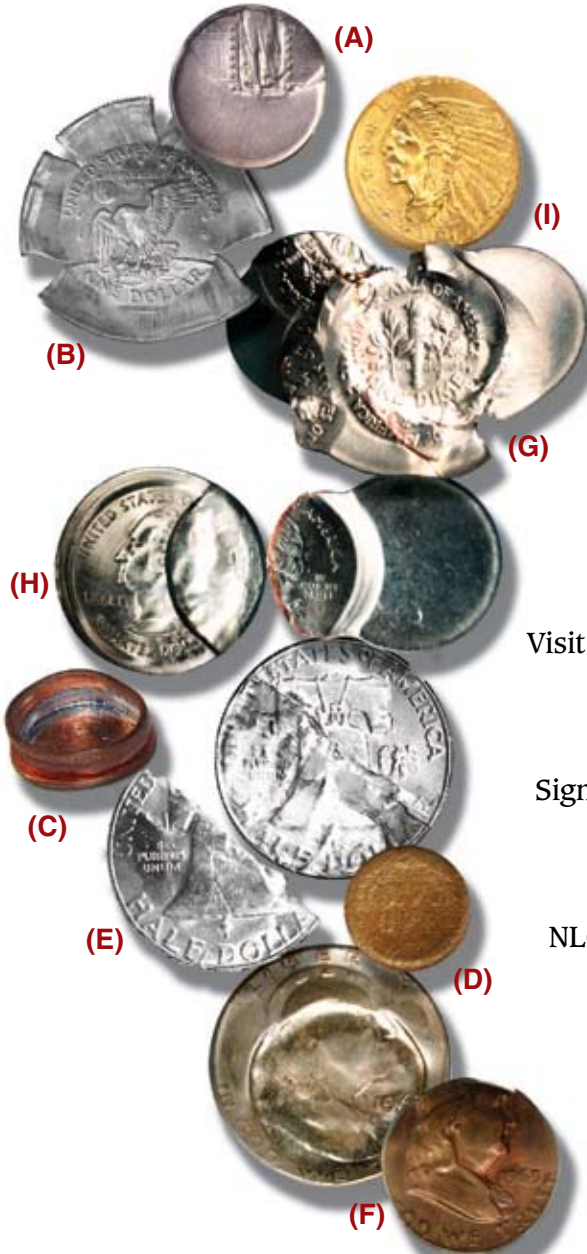
[minterrornews.com](http://minterrornews.com)

Mike Byers is the Publisher and Editor of Mint Error News Magazine





Visit [www.HeritageCoin.com](http://www.HeritageCoin.com) for your  
**ERROR COIN RESEARCH**  
**FREE MEMBERSHIP!**



Visit the [HeritageCoin.com](http://HeritageCoin.com)  
 website today  
 Easy to join  
 Free membership  
 Significant research tools  
 Easy to bid  
 Easy to buy  
 Winner of the  
 NLG's Best Commercial  
 Website Award!

These are only a sample of the thousands of error coins Heritage has handled. Consign your error coins today to the next Heritage Sale.

Look up these error coins in our Permanent Auction Archives for descriptions and full-color, enlargeable images:

- A. 2003 ANA National Money Show, lot 6963  
 1919 Quarter  
 Struck 50% Off Center  
 XF45 PCGS  
**REALIZED \$15,525**
- B. 2002 September Long Beach Sale, lot 9648  
 1999 SBA Dollar  
 Multiple Strike, Reeded Edge  
 MS65 PCGS  
**REALIZED \$6,900**
- C. 2002 New York Sale, lot 7290  
 1999 Cent  
 Die Cap With Second Coin Bonded  
 MS64 Red Uncertified  
**REALIZED \$920**
- D. 2002 February Long Beach Sale, lot 7300  
 Undated Struck Through  
 Capped Die Indian Cent  
 MS64 Brown PCGS  
**REALIZED \$1,265**
- E. 2002 FUN Sale, lot 9040  
 1963 Half Dollar  
 Split Planchet  
 AU58 Uncertified  
**REALIZED \$1,610**
- F. 2001 ANA Sale, lot 8658  
 1963 Half Dollar  
 Double Struck, Indented by a Cent Planchet  
 MS66 PCGS  
**REALIZED \$20,125**
- G. 2001 ANA Sale, lot 8651  
 1999-P Dime  
 Bonded Strike, Struck More Than 10 Times  
 MS64 Uncertified  
**REALIZED \$2,300**
- H. 2001 ANA Sale, lot 8657  
 1999 Mated Pair of Georgia Statehood Quarters  
 Partial Collar, Indent and Stretch Strike, Indent  
 MS64 Uncertified  
**REALIZED \$2,415**
- I. 2001 February Long Beach Sale, lot 7497  
 1912 Quarter Eagle  
 Struck 5% Off Center  
 MS64 NGC  
**REALIZED \$4,370**

America's #1 Numismatic Auctioneer  
**HERITAGE**  
 Numismatic Auctions, Inc.

**BO**  
 Steve Ivy  
 Jim Halberin  
 Greg Rohan  
 P.N.G.

Heritage Plaza, 100 Highland Park Village, 2nd Floor • Dallas, Texas 75205-2788  
 1-800-US COINS (800-872-6467) • 214-528-3500 • FAX: 214-443-8425  
[www.HeritageCoin.com](http://www.HeritageCoin.com) • e-mail: [Bids@HeritageCoin.com](mailto:Bids@HeritageCoin.com)  
[www.CurrencyAuction.com](http://www.CurrencyAuction.com) • e-mail: [Notes@CurrencyAuction.com](mailto:Notes@CurrencyAuction.com)



Numismatics ...Today

News, Features and Resources



Home US Coins World Coins Ancients Currency Events Resources



## NUMISMATIC NEWS & RESOURCES

The CoinLink Numismatic Directory will launch with our 10th anniversary edition of CoinLink on January 1, 2005. However, we have started accepting FREE Submissions now.

If you have a web site and want to get listed - Add your Site Here!

New site features include an Articles Database, interactive Polls, a "What's New" section highlighting everything new in the marketplace, and an expanded news section.

We are committed to providing the latest information with unequaled access to numismatic resources to make your coin collecting more enjoyable. Thanks for being a part of CoinLink.

# uspatterns.com

The Society of U.S. Pattern Collectors is dedicated to the study of many of the rarest coins struck at the U.S. Mint: patterns, die trials and experimental pieces.

## Saul Teichman's Want List

Saul.Teichman@ey.com

I am looking for the following off-metal errors:

Wartime Nickel on a Copper Cent planchet.  
Bicentennial Half on a Cent planchet.  
Bicentennial Half on a Dime planchet.  
Kennedy Half on a Sacagawea Dollar planchet - if it exists.  
Ike Dollar on a Cent planchet.

Ike Dollar on a Nickel 5 Cent planchet.  
Ike Dollar on a Dime planchet.  
Ike Dollar on a Quarter planchet.  
Sacagawea Dollar on a Cent planchet.  
Sacagawea Dollar on a Nickel planchet.  
Sacagawea Dollar on a Dime planchet - if it exists.



# Fred Weinberg & Co.

Dealer in Major Mint Error Coins & Currency



[fredweinberg.com](http://fredweinberg.com)



1960 Lincoln Cent Struck on a Silver Dime Planchet  
PCGS MS-64



1942-S War Nickel Struck on a Silver Dime Planchet  
PCGS AU-58



1875-CC Seated Liberty Dime  
Struck 10% Off-Center @ 9:00 NGC XF-40



2003-P Roosevelt Dime  
Struck on a Cent Stock Planchet PCGS MS-64 Red



1838 Capped Bust Quarter  
Struck 20% Off-Center @ 12:00 PCGS VF-25



N.D. Washington Quarter Struck 35% Off-Center  
on Type-I Copper Cent Planchet PCGS MS-62 Red



1999-P Connecticut Quarter  
STRUCK ON FEEDER FINGERS PCGS MS-62



1986 Sil. American Eagle Dollar  
100% Obverse Struck-Thru NCG MS 63





# Rich Schemmer

specializing in rare error coins for the collector

[richerrors.com](http://richerrors.com)

[Richerrors@aol.com](mailto:Richerrors@aol.com)



No Date Large Cent 35% OFF Center  
NGC MS64BN



**\$8,900**

No Date Indian Head Cent  
Multi-Error : Broadstruck & Indent NGC MS65BN



**\$1,695**

1999-P 5¢ QUAD (4) Strike  
ALL Off Center & Flip-Over NGC MS65



**\$1,250**

No Date Barber Dime  
15% OFF Center NGC AU58



**\$1,900**

1928-P Mercury Dime  
20% OFF Center NGC MS62FB



**\$1,495**

No Date Washington 25¢  
Struck Folded Clad Layer PCGS MS60



**\$1,300**

1811-P BUST 1/2\$ DOUBLE Struck  
PCGS AU55



**\$15,500**

1969-S PROOF 50¢ 22% Double Clip  
PCGS PR63



**\$5,500**



# Al's Coins

Dealer in Mint Errors  
and Currency Errors

alscoins.com

1898-O Barber Half Broadstruck  
NGC AU 58



**\$2,750**

1999-P Connecticut Quarter  
Triple Struck on Aluminum Scrap ANACS MS 63



**\$2,500**

1864 Civil War Token Flipover Double Struck  
Kanzinger Plate Coin ANACS MS 60 Unique



**\$2,000**

1972-S Proof Washington Quarter  
Obverse Double Struck ANACS PF 64



**\$4,000**

1976 Ike Dollar Double Struck  
2nd Strike 90% Off-Center PCGS MS 62



**\$2,000**

1977 Washington Quarter  
Struck on a Struck 1977 Nickel ANACS MS 64



**\$2,500**

2000-P Sacagawea Dollar  
Double Denom on Maryland Quarter NGC MS 65



**\$6,000**

2000-P Sacagawea Dollar  
Triple Struck Off-Center PCGS MS 63



**\$3,000**



# Ethiopia Werk Muled With KM-18 Reverse

This is only the second gold mule that I've ever heard of. The other is a 1829/1823 G.B. 1/2 Sovereign proof gold mule.

This gold mule is from Ethiopia and is unlisted. Somehow the obverse die which struck (1931) Werks was muled to the reverse of KM-18. The dies were not aligned properly and the reverse die was also rotated. A spectacular and unique major mint error.



# Mercury Dime Double Struck 2nd Strike 25% Off-Center

This is a very dramatic double struck Mercury Dime. The second strike is 25% off-center at the 7:00 position. Extremely rare.





# 1794 Franklin Token

## Incomplete & Curved Clips

All Major Mint Errors on Colonial Coins are scarce. Incomplete and curved clips are very rare on every type of coin. This Franklin Token is in mint state condition. Rare.





# Canadian on Foreign Overstrikes

by Patrick Glassford



Canada has produced coinage for Panama since 1975. This is a Twenty-five Cents Struck Over a 1993 Panama Copper Plated Zinc One Centesimo Coin.



5 Cents struck over  
Bandladesh 25 Piosha coin



Tiger in the Queen's hair

Bangladesh coinage has been produced by Canada since 1977. In 1978 66,750,00 Stainless Steel Twenty-five Poisha were struck.



Canada has struck coins for Israel since 1973 and produced 16,300,000 Aluminum Bronze 5 Agorot in that year.



A most spectacular multiple error. This coin has been struck 4 times! Coinage for Honduras has been produced by Canada since 1973. In 1979 30,000,000 Cupro Nickel Twenty Centavos were struck (Dated 1978).



# America's first Double Denomination

-- an Oak Tree Sixpence struck over an Oak Tree Shilling --  
With a New Kind of Error ("Slipped Die") from the Rocker Press

by Henry Hilgard

The first coins that were both designed and struck in North America were the Massachusetts silver pieces that were minted from 1652 to 1682.<sup>1</sup>

These came in denominations of twopence, threepence, sixpence and shilling (1 shilling = 12 pence). The first pieces struck were of the New England type, stamped with an NE monogram on one side. These were followed in order by the willow tree, oak tree, and pine tree pieces, all of which utilized trees as the central obverse motif. The willow tree, oak tree, and early pine tree pieces were struck using a rocker press, but most of the later pine tree pieces were struck using a screw press.<sup>2</sup>



**Figure 1. Obverse of Oak Tree Sixpence (Struck over an Oak Tree Shilling)**

The screw press dominated coinage technology in the Colonies and was the only kind of press used in the United States Mint from its humble beginnings in 1793 until the introduction of the steam press in 1836. As a result, most students of early American mint errors are familiar with the types of errors produced using the screw press, but are unaware of errors from the earlier era of the rocker press. The coin to be discussed here is from the era of the rocker press.

This coin (Figures 1 and 2) is an oak tree sixpence struck over an oak tree shilling, one of the so-called



**Figure 2. Reverse of Oak Tree Sixpence (Struck over an Oak Tree Shilling)**

"6-over-12" pieces. All Massachusetts silver coins are known by their Noe varieties, and this particular piece is a Noe 20 Oak Tree Sixpence struck over a Noe 10 Oak Tree Shilling. These 6-over-12's are of interest to the error collector because they are the earliest double denominations known among American coins.

The reverse of this sixpence (Figure 2) is relatively normal, showing the date (1652), the denomination (VI) and NGLAND of the legend NEW ENGLAND. The obverse, however, is more unusual, especially because most of the tree that should be in the center of the piece is missing, as are major parts of the legend that should read "IN MASATHVSETS". In Figure 3 the missing parts of the obverse are drawn in based on photographs of other sixpences of the Noe 20 variety.



**Figure 3. Obverse with missing sixpence detail drawn in**



On this coin the right side of the obverse was very weakly impressed by the sixpence dies, and so was the left side of the reverse (which lies directly behind the weak obverse area). These weak areas allowed some of the undertype of the oak tree shilling to show through, including on the obverse much of the 1652 date, some of the inner circle of dots, and the bottoms of the letters LAN in ENGLAND. On the reverse, some of the inner circle of dots and the bottoms of the letters TH in MASATHVSETS are clear. The shilling undertype detail is highlighted by the darkened areas in Figures 4 and 5.



**Figure 4. Obverse with shilling undertype highlighted**

Enough of the shilling undertype shows to allow it to be attributed as the Noe 10 variety, as follows. The date side of the shilling (on the obverse of the sixpence, Figure 4), with its sloping down “5”, and its arrangement of dots under the LAN in ENGLAND, matches exactly the one die that was used, with minor modifications, for 5 shilling varieties, Noe 10 through Noe 14.



**Figure 5. Reverse with shilling undertype highlighted**

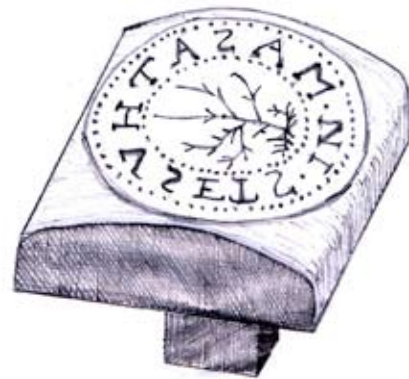
The critical factor in determining the variety is that the bases of TH from the other side of the shilling (Figure 5) show no serifs at all, as only on Noe 10. (Serifs were added when the dies were recut to produce varieties 11 through 14). An excellent illustrated sequence of Noe 10 through Noe 14 can be seen in

Stack’s auction catalog of the Hain Family Collection (January 15, 2002).

Knowing that the underlying shilling type is Noe 10 may provide a clue as to why this overstriking was carried out. Noe 10 is a variety that has been called the “ghost tree” variety (2), because on all known specimens the tree is softly struck to invisible. Thus the overstriking may have been done because the original shilling was found to be unsatisfactory due to the extreme weakness in its central detail.

Another challenge is to determine how the central portion of the oak tree could simply be omitted from this coin’s obverse. Referring back to Figures 1 and 3, it is clear that the top of the tree is very close to the tree’s roots. It is as if the obverse die had no center section! In order to understand this kind of error we need to take a look at how a rocker press works.

In a rocker press, the dies are curved rather than flat (Figure 6), and each die has a stem.<sup>3</sup>



**Figure 6. Shape of a typical rocker press die**

Obverse and reverse dies are inserted via their stems into the 2 axes on the press. At the ends of the axes are gears that maintain the correct relationship between the dies. When the operator of the rocker press turns the crank, the dies rotate and are brought together (Figure 7) with a coin blank in between. The detail of the dies is “squeezed” onto the blank.

Because of the way the dies come together in the rocker press, it becomes apparent that the missing tree detail can be accounted for by a slip of one of the dies while the coin was passing through the press. If the obverse die (tree side) slipped ahead relative to the reverse die while the coin was being held firmly on the reverse die, a portion of the obverse die simply

## America's first Double Denomination - continued from page

wouldn't contact the blank. Slippage could be caused either by improper securing of a die stem in an axle, or by improper meshing of the gears. A "slipped die" error of this kind could not happen to a coin struck in a screw press.

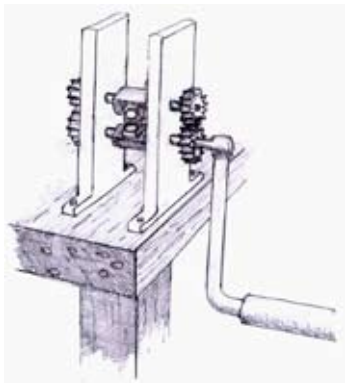


Figure 7. Sketch showing principle of rocker press operation

Thus this Oak Tree sixpence from the 17th century not only represents the first known American double

denomination; it also provides an opportunity to investigate a new type of mint error produced by rocker press technology.

### References:

- (1) R. S. Yeoman, *A Guide Book of United States Coins*, 58th Edition, Whitman Publishing, LLC, Atlanta, 2005, pp. 22-24
- (2) Stack's, *Public Auction Sale of Americana, The Hain Family Collection of Massachusetts Silver Coins*, January 15, 2002, pp. 20-21.
- (3) Denis R. Cooper, *The Art and Craft of Coinmaking*, Spink & Son, London, 1988, figure 73a, p. 71.

comments may be directed to [hhilgard@aol.com](mailto:hhilgard@aol.com)

# Rich Schemmer

specializing in rare error coins for the collector

[richerrors.com](http://richerrors.com)

[Richerrors@aol.com](mailto:Richerrors@aol.com)

### We Are Strong Error Buyers:

**We are ALWAYS looking to BUY better U.S. mint error coins. Whether a single coin or bulk lots, we offer some of the highest prices paid in today's error market. (no doubled dies, mint mark varieties, or other minor or damaged errors, please). We are looking for high-end dramatic error coins for our customers.**

**For our highest cash offer, simply ship the error coins to us at the address below. Be sure to include a name and a day-time telephone number where we can reach you.**

**Have that dramatic error you may want to sell? Contact us!!**

# 1886 Broadstruck Gold Dollar

*Editor's Note: From the Heritage Galleries 2005 June Long Beach Signature Auction Listing*

In searching our archives for broadstruck gold coins, the only listing we could find was for a 1906-D Double Eagle sold back in 2003. Needless to say, such errors are highly unusual for anything struck in gold. What makes this spectacular offering even more intriguing is that only 5,000 business strikes were produced in 1886, so the odds of an error slipping through are only more miniscule. This out-of-collar striking is shifted toward 8 o'clock and displays vibrant luster.



## **SUBMIT YOUR ARTICLE TO MINT ERROR NEWS MAGAZINE**

**Please make sure you have copyrights to any content that you submit. Your article may be subject to revision. If you include images with your article, please use a minimum resolution of 300 DPI.**

**Please submit all content to:**

**[editor@minterrornews.com](mailto:editor@minterrornews.com)**



# Harry E. Jones

## Rare Coins & Currency

Sell Harry Your Mistakes!!

Leading Dealer in Error Currency For Over 30 Years. Buying and Selling the Finest in Error Currency. Especially Want Errors on National Currency. Also Buying Uncut Sheets of Nationals Large and Small.

7379 Pearl Rd.  
Cleveland, OH 44130

440-234-3330

LM ANA PNG PCDA



**COINLINK** 

Numismatic News & Rare Coin  
Web Site Directory

**coinlink.com**

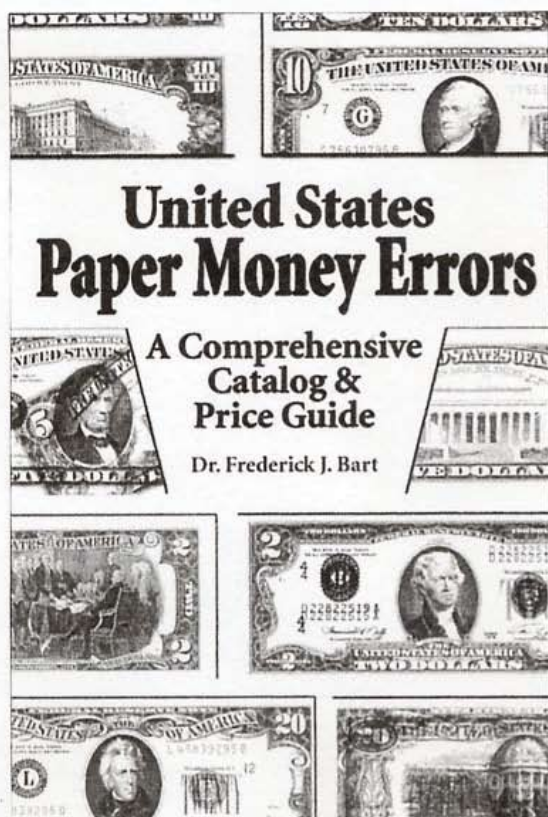
The LONG AWAITED SECOND EDITION of

# United States Paper Money Errors: A Comprehensive Catalog & Price Guide

by **FREDERICK J. BART**

foreword by **HARRY E. JONES**

Will be **READY to SHIP** in a **COUPLE** of **WEEKS ...RESERVE YOUR COPY** now  
published by **KRAUSE PUBLICATIONS**  
available from Krause Publications, their distributors, your supplier, or directly from the author



- **COMPREHENSIVE INFORMATION on US PAPER MONEY ERRORS** ranging from **DOUBLE DENOMINATIONS** to **INK SMEARS**
- **COMPLETELY RE-WRITTEN**
- **UP-to-DATE PRICE GUIDE** in **THREE GRADES**
- **550 PHOTOGRAPHS** (b & w) of **SMALL SIZE & LARGE SIZE ERRORS**
- **256 PAGES**, 6" x 9", softbound
- **HISTORICAL PHOTOGRAPHS**
- **BEHIND-the-SCENES** peeks at "INSIGHTS and INCIDENTS"
- **SUITED for both the ADVANCED COLLECTOR and the BEGINNER**
- **DATA for the RESEARCHER, CATALOGUER, and DEALER**

-----ORDER FORM-----

I wish to reserve--and am enclosing payment for--one copy of *United States Paper Money Errors* at \$24.95. My check will not be cashed until the book is ready to ship. I would like the book:

- autographed by the author
- inscribed, as indicated below, and autographed

\_\_\_\_\_

\_\_\_\_\_

\_\_\_\_\_

Please mail the book to:

\_\_\_\_\_

\_\_\_\_\_

\_\_\_\_\_

\_\_\_\_\_

# Fred Weinberg & Co.

Dealer in Major Mint Error Coins & Currency



[fredweinberg.com](http://fredweinberg.com)



## BUYING MAJOR ERROR COINS & CURRENCY

If you have a single major mint error coin, either a recent issue or an older type coin, or 1,000 Off-Center Cents, please contact us. We stock over 60,000 Major Mint Error Coins and constantly need to purchase Major Error Coins for our clientele (please note that we do not deal in or buy Die Varieties, Damaged Coins, Doubled Dies, Filled Dies, or Die Cracks).

We do buy Major Mint Errors - such as Off-Center, Off-Metals, Double Strikes, Clad Layers missing, Die Caps, Double Denomination, etc.

Because of the many differences in each Error Coin we request that you send scans of your coin(s) to us for our examination and firm offer.

Postal Correspondence:

Telephone/Fax:

16311 Ventura Blvd.

Phone: (818) 986-3733

Suite #1298

Toll-free: (800) 338-6533

Encino, California 91436

Fax: (818) 986-2153

e-mail: [fred@fredweinberg.com](mailto:fred@fredweinberg.com)

# fredweinberg.com



# Robert L. Astrich

P.O. Box 981

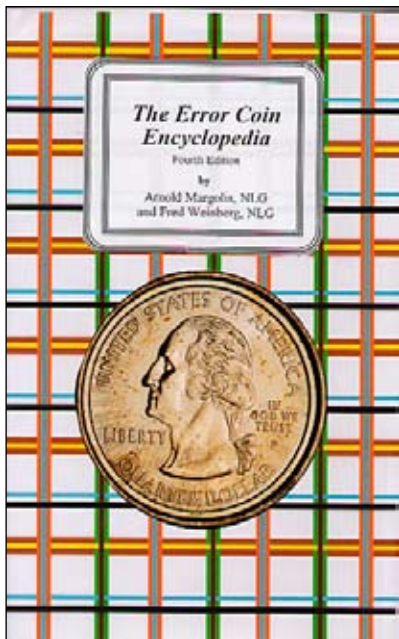
Hempstead, TX 77445

Office: (979) 826-2221 Fax: (979)826-6566

I BUY AND SELL MAJOR ERROR COINS, ALL U.S. COINS & EARLY FOREIGN CROWNS & GOLD, HIGH GRADE CERTIFIED MORGAN & PEACE DOLLARS, U.S. DATED GOLD & HI RELIEFS, EARLY 1936-42 PROOF SETS CERTIFIED & RAW.

I AM A STRONG BUYER OF ORIGINAL EARLY MINT SETS 1947-58, AND PAY STRONG PRICES FOR ORIGINAL ROLLS OF CENTS THRU HALF DOLLARS 1954 & EARLIER. I ALSO BUY ORIGINAL BU DOLLAR ROLLS. I AM A FULL TIME USER OF THE CERTIFIED COIN EXCHANGE AND THE COIN NET SYSTEMS. I AM AN ACTIVE BUYER OF LARGE COIN COLLECTIONS.

ALL TRANSACTIONS WILL REMAIN CONFIDENTIAL.



Entirely rewritten edition. 495 pages.  
Hard Cover 4th Edition: \$39.95 postpaid

Available from:

**Arnie Margolis  
&  
Fred Weinberg**

# Silver Towne L.P.

50 years of quality Tradition: Make new friends  
but keep the old - one is silver the other is gold.

[silvertowne.com](http://silvertowne.com)

100 GREATEST  
U.S. COINS



New Book - 100 Greatest U.S. Coins  
by Jeff Garrett and Ron Guth  
Order your copy today!  
**CoinFacts.com**

# Independent Coin Grading Company

## A Company Formed By Some Of The Industry's Top Graders.



KEITH LOVE, FOUNDER AND CEO

Only ICG offers you all this:

ICG's "No-grade, No-Fee" policy. We charge a \$5 processing fee if we "no grade" a coin.

Intercept Shield, Ultimate protection for your collectibles.

\$1 credit for returning our insert tags, (pre 1950 coins) and a 50¢ credit for all 1950 or later coins.

Quick turnaround times to preserve cash flows.

Sonically sealed, tamper-evident, attractive holder with our SECUREGRAM™ hologram system.

And, most important ... expert, consistent grading by the most respected names in the business.

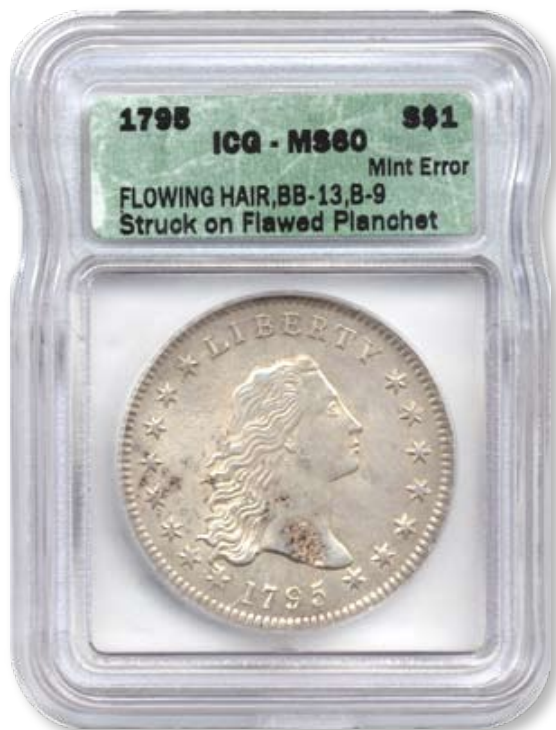


Photo courtesy of mikebyers.com



Photo courtesy of mikebyers.com

### ICG

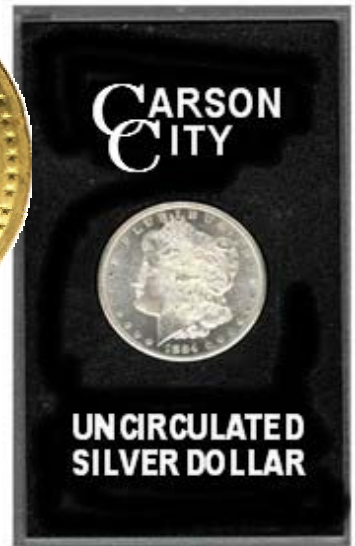
7901 East Belleview Ave., Suite 50  
Englewood, CO 80111  
877-221-4424 (Toll Free) - 303-221-5524 (Fax)

H  
O  
M  
E  
O  
F  
T  
H  
E  
A  
M  
A  
Z  
I  
N  
G  
B  
R  
O  
K  
E  
N  
C  
C

# NORTHERN NEVADA COIN

[www.brokencc.com](http://www.brokencc.com)

WE BUY & SELL  
RARE COINS.  
VISIT US ON THE  
WEB TO VIEW  
OUR  
EVER-CHANGING  
INVENTORY



3655 B RESEARCH WAY  
CARSON CITY, NV 89706

**1-888-836-8DOLLAR**

**1-888-836-5527**

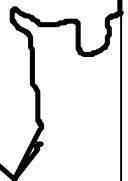
**1-775-884-1660**



MEMBER



MEMBER  
Northern Nevada,  
Inc.





# ERROR WORLD

Join the *hottest*  
**Error Coin Club on the Net!**

**e r r o r w o r l d c l u b . o r g**

The Error World on-line coin club exists for the purpose of advancing the knowledge and the field of error coin collecting.

Error World is dedicated to the promotion, discussion and dissemination of facts and ideas about error coinage, both domestic and world-wide.

Error World exists as a vehicle to bring collectors of both foreign and domestic error coinage together in a professional and relaxed atmosphere where they can exchange information, display photos and engage in lively debate about error coinage.

---

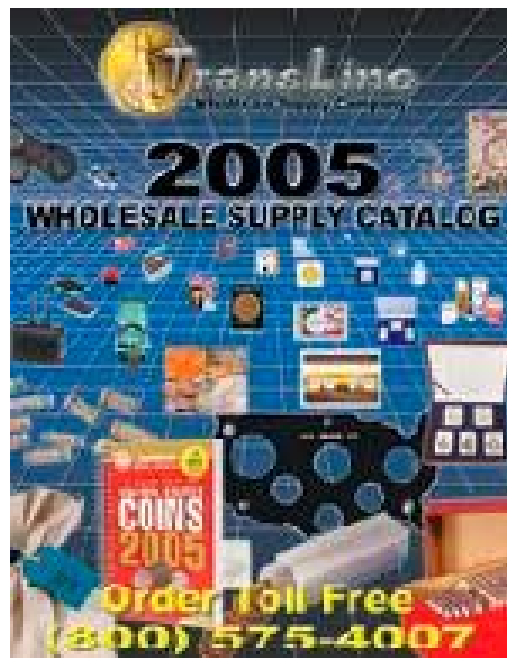
Error World is a non-profit organization with all revenues being put back into the club to provide improved services to the members of the club.

Error World will, from time to time, accept contributions from designated Patrons in the form of contest prizes, and/or cash to be used to defray club expenses.

Error World will, from time to time, attempt to obtain sponsors from the numismatic field who will bring price saving offers to Error World members.

Transline Wholesale Supply Company

*Wholesale Only 1-800-575-4007*



**Bart Crane**

**[translinesupply.com](http://translinesupply.com)**

**CALL TOLL FREE: (800) 575-4007**

**Business Hours**

**Monday - Friday: 7:30AM - 5:30PM PST**



**JIM'S COINS & STAMPS**  
 702 N. Midvale Blvd. B-2  
 Madison, WI 53705  
 (608) 233-2118

# ERROR AUCTIONS

Six per year for 22 years!

YR. Subs. \$8.00, Sample \$2.50

Free Download: [www.jimscoins.net](http://www.jimscoins.net)

Len Roosmalen



James Essence



# Jim's Coins Error Auctions

MAIL BID SALE #10

CLOSES SEPTEMBER 30, 2005

- 1) SEND ALL BIDS TO: JIM'S COINS, 702 N. MIDVALE BLVD. B-2, MADISON, WI 53705, OR FAX #608-233-1075, OR PHONE 608-233-2118, OR EMAIL: jimcoins@sbcglobal.net
- 2) THE HIGHEST BIDDER ACKNOWLEDGED BY THE AUCTIONEER SHALL BE THE BUYER. THE AUCTIONEER RESERVES THE RIGHT TO REJECT ANY BID OR WITHDRAW ANY LOT FROM THE SALE. BIDDERS ARE RESPONSIBLE FOR THEIR OWN ERRORS, SO DOUBLE CHECK YOUR BIDS. THE FIRST POSTMARK WINS IN CASE OF A TIE BID.
- 3) ALL SALES ARE FOR CASH AND ARE PAYABLE IMMEDIATELY UPON RECEIPT OF THE INVOICE
- 4) AUCTIONS ARE OPEN TO ALL AND NO DEPOSIT IS REQUIRED OR DESIRED.
- 5) NO UNLIMITED BIDS ARE ACCEPTED. WINNING BIDDERS WILL BE AWARDED LOT AT THEIR BID OR AT A 10% ADVANCE OVER THE SECOND HIGHEST BID, WHICHEVER IS LOWER. IF NO OTHER BIDS ARE RECEIVED FOR A LOT, THE BIDDER WILL BE AWARDED THE LOT AT THE MINIMUM BID, OR ESTIMATE IF NO MINIMUM IS GIVEN.
- 6) ALL ITEMS ARE GUARANTEED GENUINE. BIDDERS MAY RETURN ANY ITEM NOT AS DESCRIBED.
- 7) A \$1 HANDLING CHARGE WILL BE ADDED TO ALL WINNING INVOICES. BID EARLY AND BID OFTEN. THANKS! -LEN & JIM

1	ASST	QUAR	CANADA, 7 PCGS OFF METAL QUARTERS, ON 1C:1978, 92 QUEBEC, ON 5C:1977, ON 10C: 76,80,ND, ON ISREAL ALUM: 1976	MS66	MB	\$1,750.00
2	1885	DOLL	PARTS OF 3 STAPLES STRUCK INTO REV NEAT PCGS	MS62	MB	\$1,675.00
3	1973 S	DOLL	STRUCK THRU 3 HAIRS 3:00 FIELD LOOKS LIKE MICK JAGER IKE 40% SILVER PCGS	MS66	MB	\$395.00
4	1971 D	DOLL	DUBL STRK, 2ND 95% O/C 2:00 UNIFACE OBV NICE REV NGC	MS63	MB	\$325.00
5	1978	DOLL	10% OFF CENTER 10:30 ANACS	MS64	MB	\$299.00
7	1976 D	DOLL	DUBL STRK, 2ND 80% O/C 6:00 DSBS NEAT BICENT PCGS	MS61	MB	\$2,595.00
8	1974 D	DOLL	STRK ON PHILIPPINE 1 PISO PROOF LIKE LIGHT TONING NGC	MS66	MB	\$1,475.00
9	1976	DOLL	15% STRAIGHT CLIP 3:-6:00 + PARTIAL COLL, NEAT PCGS	MS63	MB	\$625.00
10	N.D.	DOLL	SBA, 80% OFF CENTER WITH CHAIN EDGE 6:00 NGC	MS65	MB	\$335.00
11	1979 S	DOLL	REV CLAD LAYER OFF BEFORE STRUCK BRIGHT COPPER PCGS	MS65	MB	\$575.00
12	1999 P	DOLL	SBA, 35% O/C 2:00 SUPER NEAT & BRIGHT NGC	MS67	MB	\$699.00
13	1999 P	DOLL	DUBL STRK, 2ND 65% O/C 3:00 UNIF REV ANACS	MS66	MB	\$1,895.00
14	2001 P	DOLL	SAC, OBV CLAD LAYER OFF BEFORE STRK BRIGHT	MS63	MB	\$799.00
15	N.D.	DOLL	SAC, TYPE 2 PLANCHET NGC	UNC	MB	\$79.00
16	1943	HALF	MINOR PLANCHET CRACK 5:30 ON SUPER COIN WALKER ANACS	MS64	MB	\$50.00
17	N.D.	HALF	40% SILVER TYPE 2 PLAN 2 CLIPS 5.5% RARE PCGS	MS62	MB	\$250.00
18	1989 P	HALF	STRK 10% O/C 3:00 PCGS	MS64	MB	\$165.00
19	1966	HALF	SMS, MISALIGNED DIE TOWARDS 10:00 ANACS	MS63	MB	\$395.00

20	1989 P	HALF	DUBL SRTUCK, FLIP OVER 95% O/C 10:30 STRK BOTH SIDES NGC	MS63	MB	\$299.00
21	1965	QUAR	TOTAL OBV STRK THRU CLOTH A REALLY SUPER EXAMPLE ANACS	MS60	MB	\$295.00
22	1998 P	QUAR	OBV 40% BROCKAGE 11:30 + BROADSTRK WITH PLAN SPILT PCGSms65	MS65	MB	\$225.00
23	N.D.	QUAR	STRK 10% O/C WITH CUD OVER DATE WQC-ND-14 WOWSER NGC	MS64	MB	\$349.00
24	1998 P	QUAR	DUBL STRK IN COLLAR REED EDGE NEAT PCGS	MS64	MB	\$115.00
25	2004 P	QUAR	FLA, STRUCK ON NICKEL PLANCHET ANACS	MS65	MB	\$1,795.00
26	1999 P	QUAR	DEL, STRK 30% OFF CENTER 11:00 PCGS	MS64	MB	\$399.00
27	2000 P	QUAR	S.C, MAJOR FILLED DIES OBV & REV GOOD EXAMPLE PCGS	MS62	MB	\$79.00
28	1999 P	QUAR	GA, DUBL STRK, 2ND 35% O/C 10:00 UNIF REV NGC	MS64	MB	\$399.00
29	1999 P	QUAR	CT, DUBL STRK, BROADSTRK,60% O/C 6:00, UNIF REV, SUPER, NGC	MS64	MB	\$595.00
30	1999 P	QUAR	N.J, DUBL STRK, 2ND 85% O/C 12:00 UNIF REV PCGS	MS61	MB	\$395.00
31	2000 P	QUAR	N.H, TRIPLE STRK, 2&3 STRIKES 30% O/C 2:00, ALL STRK BOTH SIDES ANACS	MS63	MB	\$475.00
32	1999	QUAR	N.J, DUBL STRK, OBV 55% OBV BROCKAGE NICE NGC	MS65	MB	\$400.00
33	1814	DIME	DOUBLE STRUCK, BOLDLY DOUBLED LIBERTY AND STARS NEAT OLDIE ANACS	AG3	MB	\$575.00
34	1957	DIME	REVERSE STRUCK THRU STRUCK SCRAP, PART HEAD NGC	MS63	MB	\$189.00
35	1858	SIL3c	STRUCK 5% OFF CENTER 7:00 PCGS	VF30	MB	\$650.00
36	1896	NICK	STRUCK 12% O/C 1:00 LITE CLEANING NEAT EXAMPLE NGC	AU50	MB	\$499.00
37	1883	NICK	DUBL STRUCK ROTATED IN COLLAR NGC	GD4	MB	\$595.00
38	1920	NICK	35% OFF CENTER 2:30 FULL DATE PCGS	VF25	MB	\$750.00
39	1917	NICK	45% OFF CENTER 3:00 FULL DATE HIGH GRADE PCGS	MS64	MB	\$2,650.00
40	N.D.S	NICK	STRUCK ON SILVER DIME PLANCHET WAR NICK TONED NICE ANACS	AU50	MB	\$1,500.00
41	N.D.	NICK	STRK ON SILVER DIME PLANCHET PCGS	MS62	MB	\$535.00
42	N.D S	NICK	STRUCK ON SILVER DIME PLAN WAR TYPE, PCGS	VG10	MB	\$600.00
43	1988	NICK	STRUCK ON CENT PLANCHET REDBROWN ANACS	MS62	MB	\$350.00
44	1995 P	NICK	HUGE BROADSTRIKE LGR THAN QUAR SIZE PCGS	MS64	MB	\$75.00
45	1838	CENT	10% INDENTED OBV 2:30 PCGS	VG08	MB	\$275.00
46	1817	CENT	RIM CLIP 5:00 NICE LOOKING SAYS CLEANED UNC DETAILS NET ANACS	AU55	MB	\$249.00
47	1818	CENT	30% O/C 2:30, CUT ON FACE ANACS	GD6	MB	\$399.00
48	1809	1/2C	10% INDENT REVERSE, CORRODED NCS DETAILS	GOOD	MB	\$189.00
49	1804	1/2C	DUBL STRUCK SLIGHT ROTATED BETWEEN STRIKES DAMAGED STILL PRETTY GOOD LOOKING NCS DETAILS	VG	MB	\$325.00
50	1806	1/2C	SM 6 NO STEMS, DUBL STRK BENT NGC DETAILS	EF	MB	\$335.00
51	1857	CENT	STRK ON THIN PLANCHET 69 GRAINS WOWSER HIUGH GRADE PCGS	MS63	MB	\$685.00
52	1895	CENT	5% OFF CENTER 9:00 POROUS SEGS	AU50	MB	\$95.00

See [jimscoins.net](http://jimscoins.net) for full auction. Thank you!

# MINTERRORNEWS™ MUSEUM

Enjoy viewing the major mint errors in our museum. These are exciting and dramatic examples of major mint errors that we wanted to share with our readers.

1945 Walking Liberty Half Dollar  
Double Struck in Collar  
ANACS AU 50

1974-D Kennedy Half Dollar  
Struck on Wrong Planchet  
ANACS AU 58



2000-P Sacagawea Dollar  
Triple Struck with Indent  
ANACS MS 63

1965 Jefferson Nickel Special Mint Set  
Struck 5% Off-Center  
PCGS MS 64





1943-S Lincoln Cent  
Struck on Silver Dime Planchet  
PCGS AU 50



U.S. Dollar  
90% Silver Blank Planchet  
PCGS MS 60



(1966) Kennedy Half Dollar  
Struck on a Quarter Planchet  
NGC MS 65



1999-P Connecticut Quarter  
Triple Struck on Aluminum Scrap  
ANACS MS 63



Philippine Piso  
Struck on U.S. Nickel Planchet  
PCGS MS 63



1966 Lincoln Cent  
Struck on Clad Dime Planchet  
PCGS MS 65



1970-S Jefferson Nickel  
Struck on Cent Planchet  
PCGS MS 63



(1931) Ethiopia Werk  
Muled With KM-18 Reverse  
NGC XF 45



1972-S Proof Washington Quarter  
Multi Struck Reverse Cap  
ANACS PF 65



1981-S PROOF Washington Quarter  
Double Struck Both Strikes Off-Center  
ANACS PROOF 65 Heavy Cameo



1977-D Kennedy Half Dollar  
Struck on a 40% Silver Planchet  
ANACS MS 61



Chile 100P  
Gold Planchet Pattern  
NGC MS 63





1945 War Time Nickel  
Struck 60% Off-Center  
PCGS MS 64



1999 Pennsylvania Quarter  
Corner Clip  
NGC MS 64



1878 Silver Dollar  
Wire Struck in Reverse  
PCGS MS 62 Proof-Like



1911-D Barber Dime  
Struck 20% Off-Center  
PCGS AU 58



1900-S Barber Dime  
Struck 20% Off-Center  
PCGS AU 58



1955 Lincoln Cent Double Die  
Struck on a 26% Tapered Planchet  
PCGS AU 55





# Frequently Asked Questions

---

## What are off-center strikes?



Off-center coins are one of the most common and best known types of errors. This happens when a blank which is supposed to be fed into the press, lands in the collar improperly. When this occurs only part of the blank is between the upper and lower dies. When the dies strike the blank, only that part will be struck with a design.

# Frequently Asked Questions

---

## What are partial collars?



Partial collar strikes occur when there is a malfunction of the striking press. This causes the collar to be in an incorrect position. The lower die (usually the reverse die) is recessed in the collar. This allows the coin which is going to be struck to have a formed rim. After a coin is struck the lower die raises upwards, pushing the struck coin out of the collar and ejecting it.

If a blank entering the collar is not properly seated, it will only have partial reeding as it is struck. The edge of this coin will have a partial reeding and a partial blank surface area. Recently, the Mint has installed new machinery where either die can be installed in either position.

## Upcoming Coin Shows



Visit Mike Byers at his table.

July 21-23	Santa Clara Coin Expo
July 26-31	ANA World's Fair of Money
Sept. 21-24	Long Beach Coin & Collectible Expo
Oct. 27-29	Las Vegas Coin Expo
Nov. 16-19	Santa Clara Coin Expo

# Karl Stephens

ANA LM 3112

## Dealer in World Coins, Patterns & Mint Errors

P.O. Box 3038, Fallbrook, CA 92088  
760-731-6138 • FAX: 760-731-9132  
www.karlstephensinc.com

# MINTERRORNEWS MAGAZINE

## Coming in Issue 13

# MINTERRORNEWS MAGAZINE

Bringing the latest mint error news to the collector.



[minterrornews.com](http://minterrornews.com)

**Just Discovered & Certified by NGC:  
A Two Headed Off-Metal Mint Error**



Excited About Mint Errors?  
Join Error World Club  
[errorworldclub.org](http://errorworldclub.org)



Issue 13 • Spring 2006  
A Mike Byers Publication

## Wanted To Buy: Buffalo Nickel Errors

Large laminations, straight clips, curved clips, off centers, broadstrikes or cuds on any of the following dates: 1925-D, 1926, 1926-D, 1927-S, 1928-D, 1935-D, 1937-S.

### Also:

Off centers	1930, 1931-S, 1938-D
Off centers	55% & 70%
Off centers	55% to 75% at 9:00
Misaligned die	10% or more
Reverse cuds	K-3, K-8, K-10
Curved Clips	Obverse - K-1, K-7, K-12

*Please describe & price.*

**Bob Entlich**  
c/o Stacks  
123 W. 57th St.  
New York, NY 10019



# BYERS NUMISMATIC CORP

MIKEBYERS.COM



**The Largest Dealer of the World's Rarest Mint Errors™**

U.S. & WORLD MAJOR MINT ERRORS • DIE TRIALS • NUMISMATIC RARITIES



We handle the world's finest Major Mint Errors and Numismatic Rarities. Our premier MULTI-MILLION DOLLAR INVENTORY includes only the best, museum quality, world class and exotic U.S. and World Major Mint Errors and Die Trials. Many of our purchases are immediately sold to our customers, and don't even reach our website to be sold, or eBay to be auctioned. Send us your want list, we may have what you're looking for.

## MIKE BYERS

P.O. Box 5090, San Clemente, CA USA 92674

Office: 949-276-7072 • Fax: 949-276-7073

Fed Ex Address only: 1001 Avenida Pico #C 612, San Clemente, CA 92673

E-Mail: [mike@mikebyers.com](mailto:mike@mikebyers.com) • Website Design: [sam@mikebyers.com](mailto:sam@mikebyers.com)

Mike Byers, Professional Numismatist since 1978

Byers Numismatic Corp. A California Corporation Since 1980

Mike Byers is a consultant to ANACS for Mint Errors

